



Oracle Cloud Infrastructure, Data and AI

Lance Olson

Vice President of Product Management

Data and AI



Cloud for your critical enterprise apps and data

First Generation Cloud

Elastic resources

Pay for what you use

High scale

Self-service

Easy to use



Oracle Cloud

Superior performance

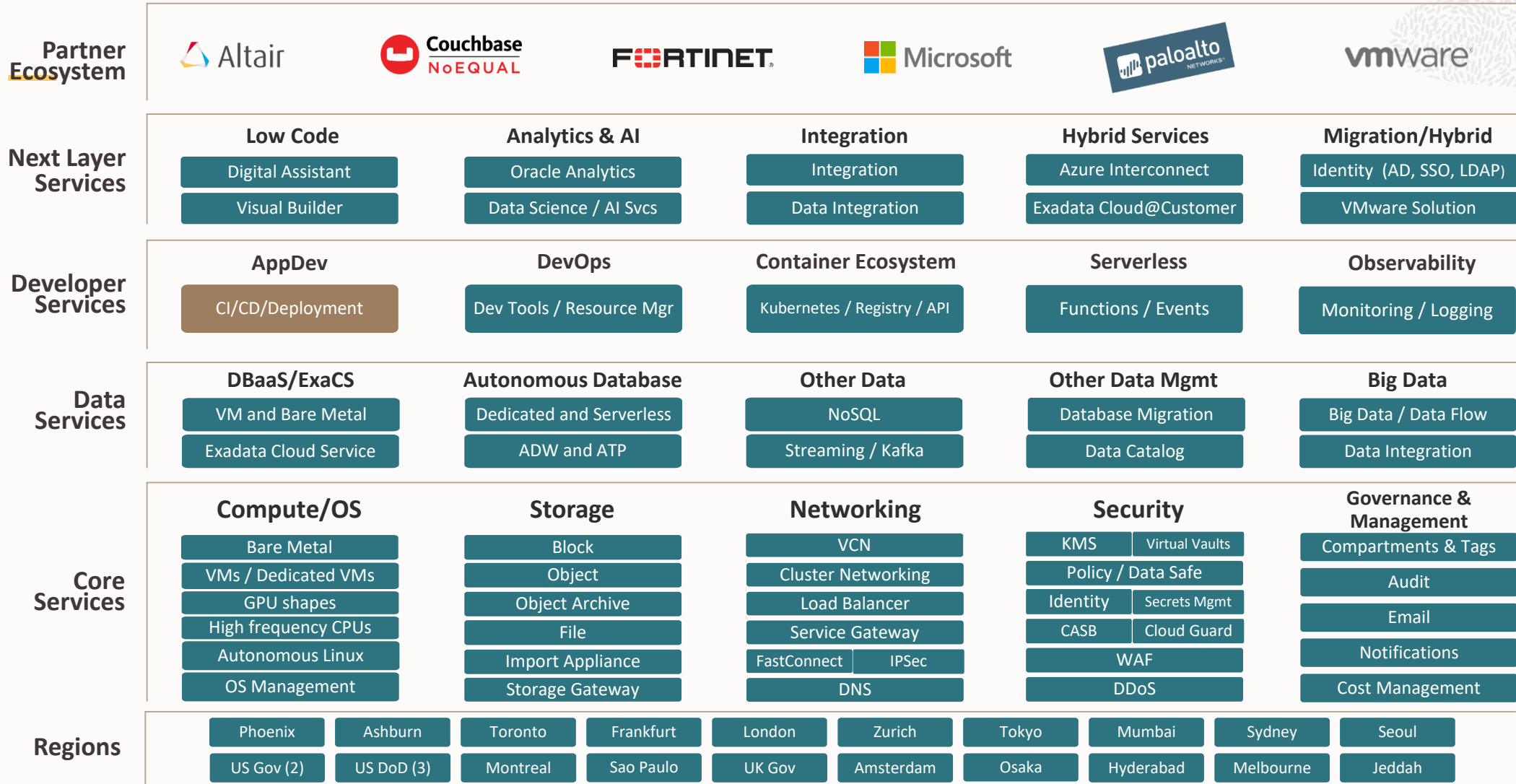
Superior economics

Enterprise class

Security first

Open ecosystem

Complete Enterprise Platform



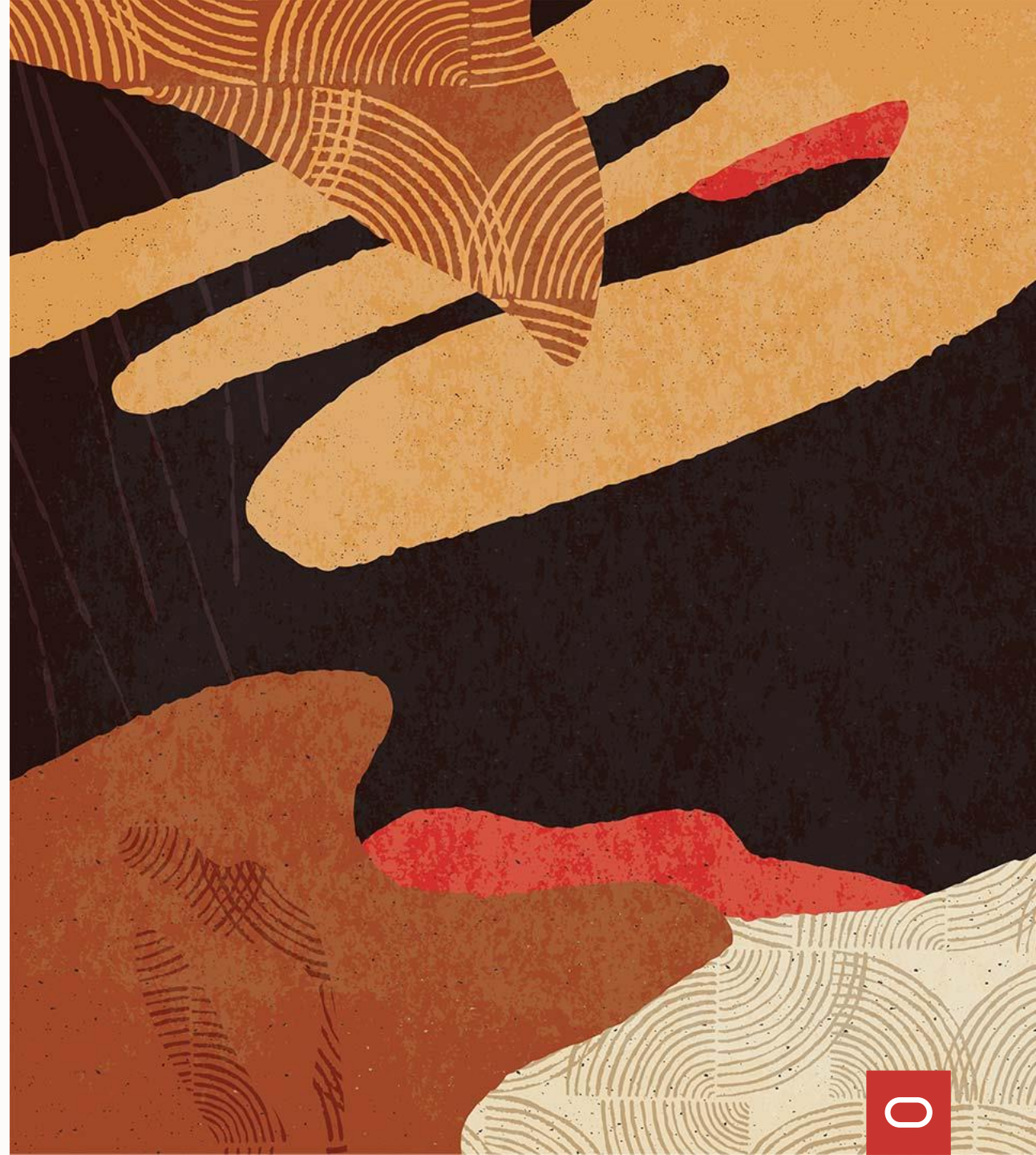
29 Oracle Cloud regions and growing

November 2020: 29 Regions Live, 9+ Planned; 6 Azure Interconnect Regions

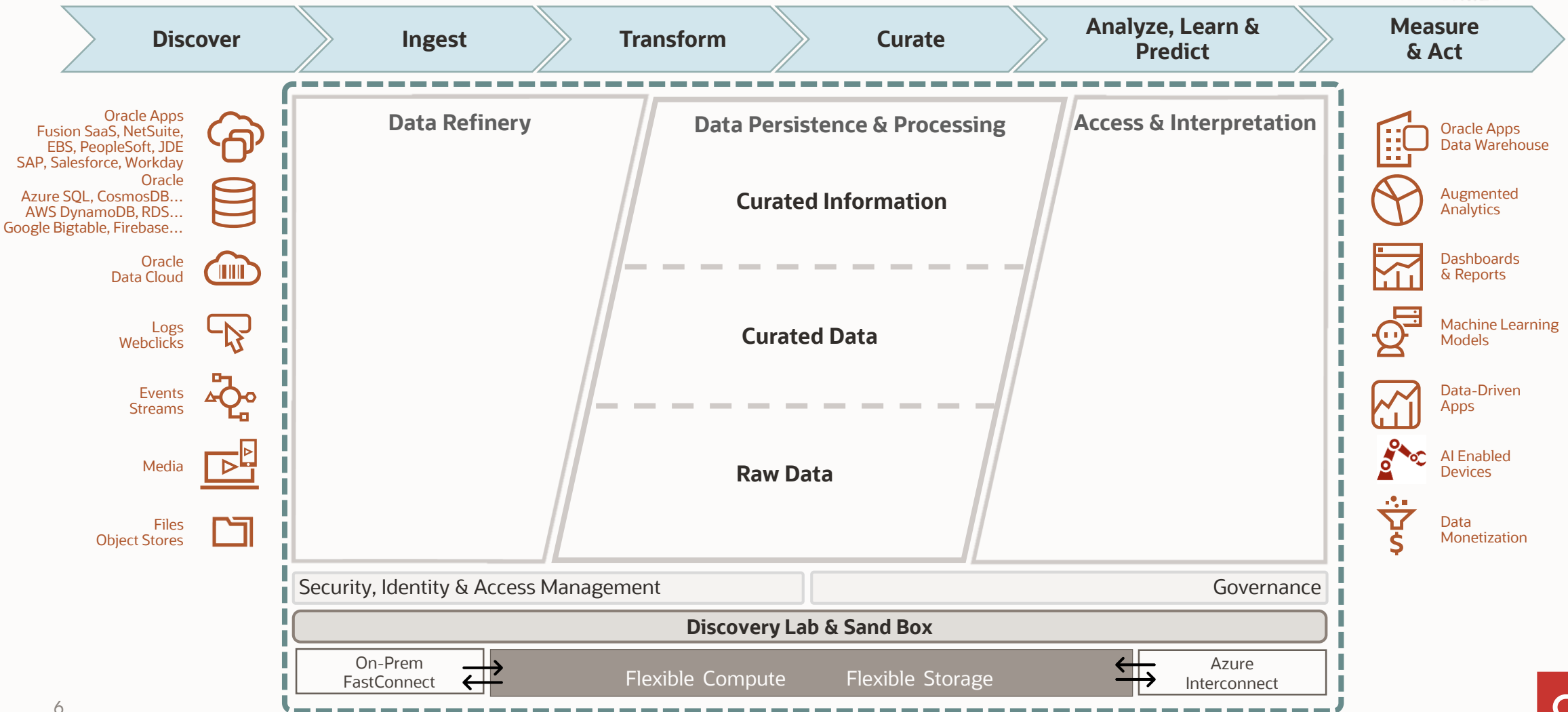


Modern Data Warehouse

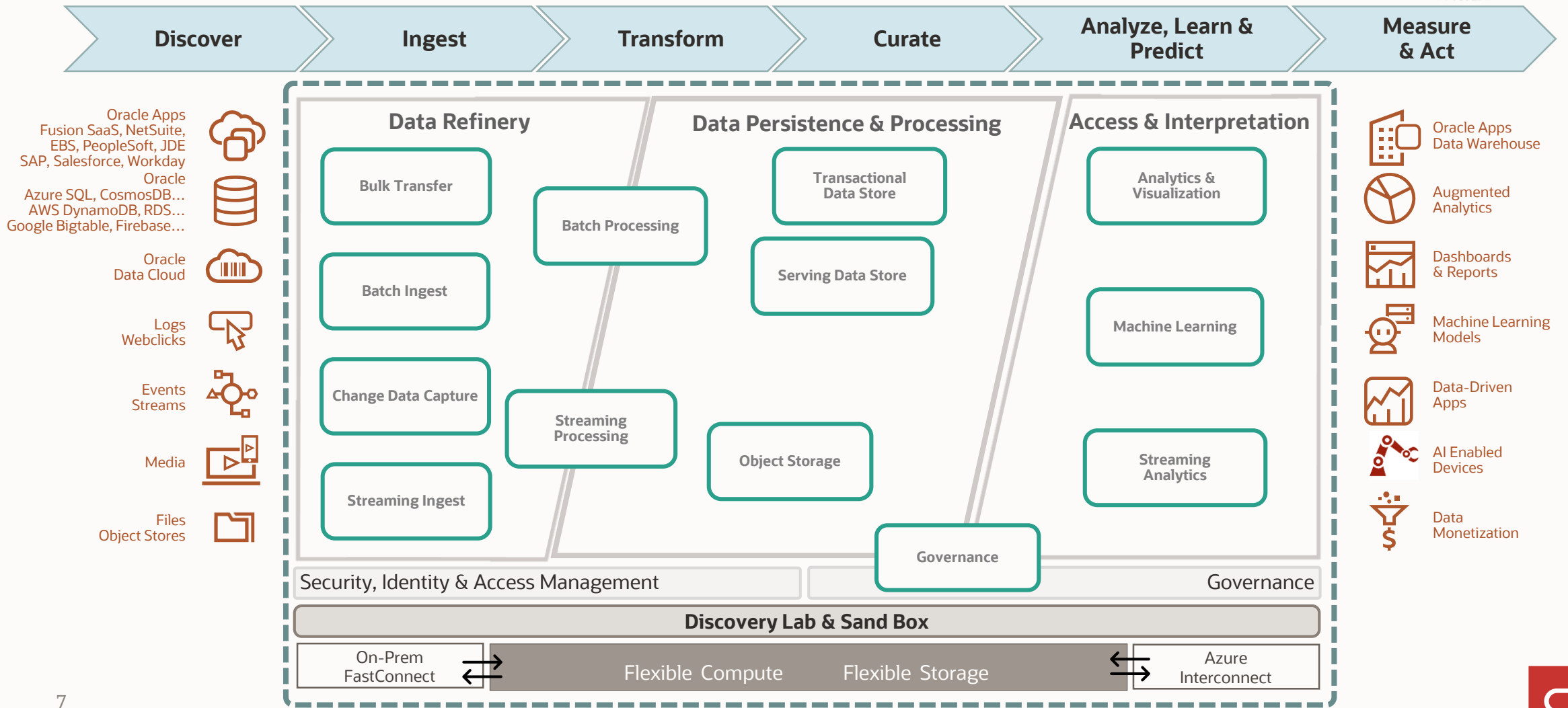
Reference Architecture and Patterns



Reference Architecture



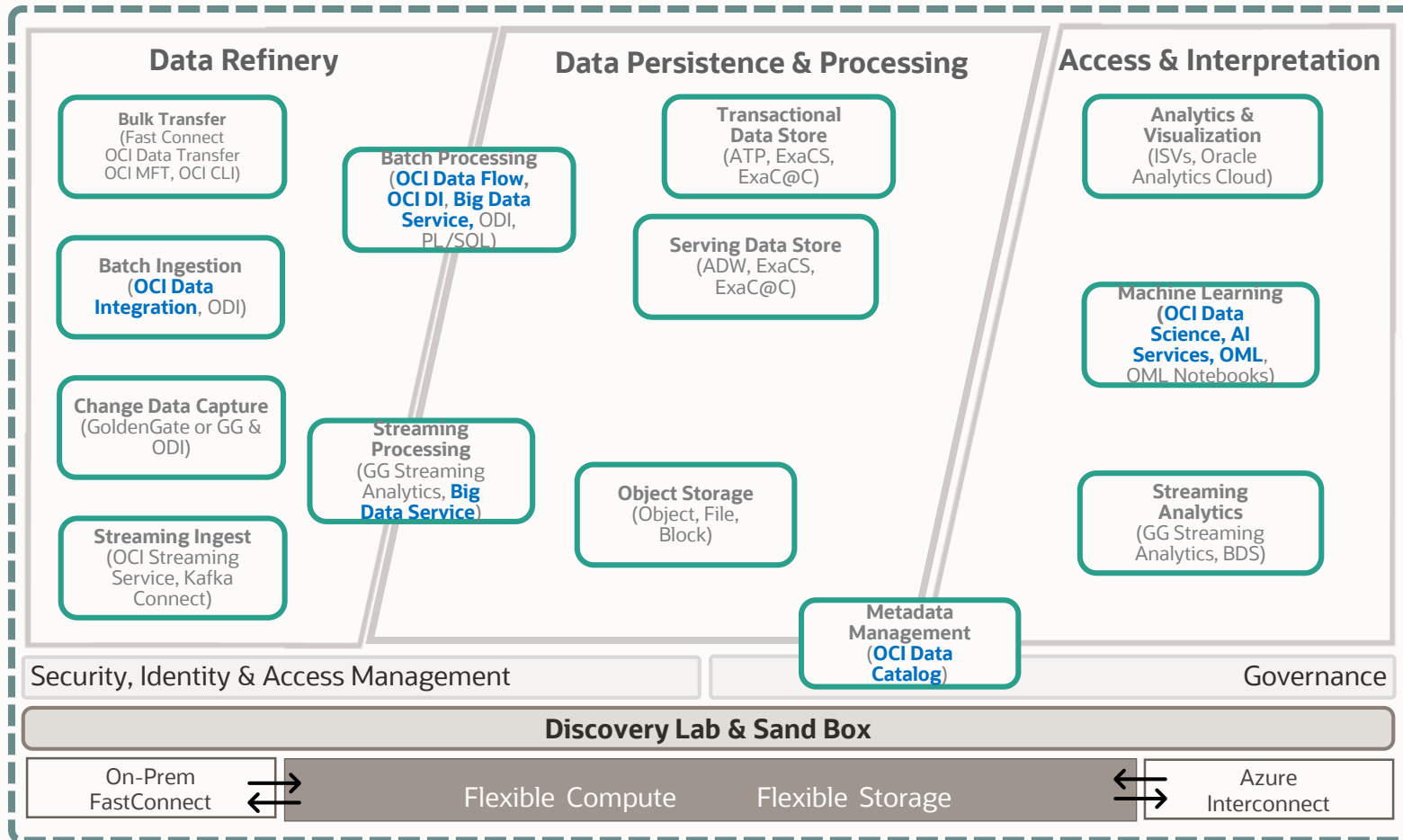
Capabilities Mapping



Capability to Product Mapping



- Oracle Apps
Fusion SaaS, NetSuite,
EBS, PeopleSoft, JDE
SAP, Salesforce, Workday
- Oracle
Azure SQL, CosmosDB...
AWS DynamoDB, RDS...
Google Bigtable, Firebase...
- Oracle
Data Cloud
- Logs
Webclicks
- Events
Streams
- Media
- Files
Object Stores

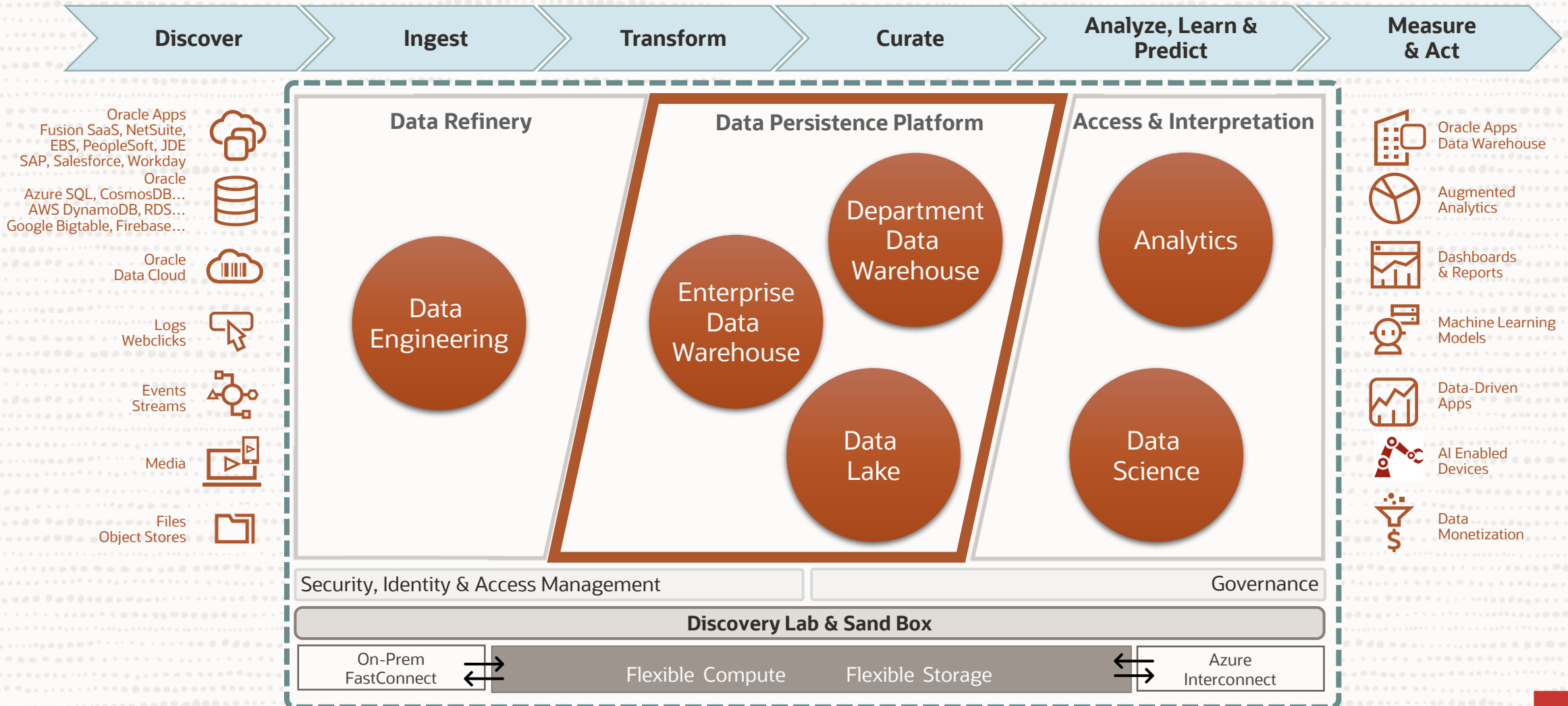


- Oracle Apps
Data Warehouse
- Augmented
Analytics
- Dashboards
& Reports
- Machine Learning
Models
- Data-Driven
Apps
- AI Enabled
Devices
- Data
Monetization



The Modern Data Warehouse

Enabling rapid, actionable, data-driven outcomes

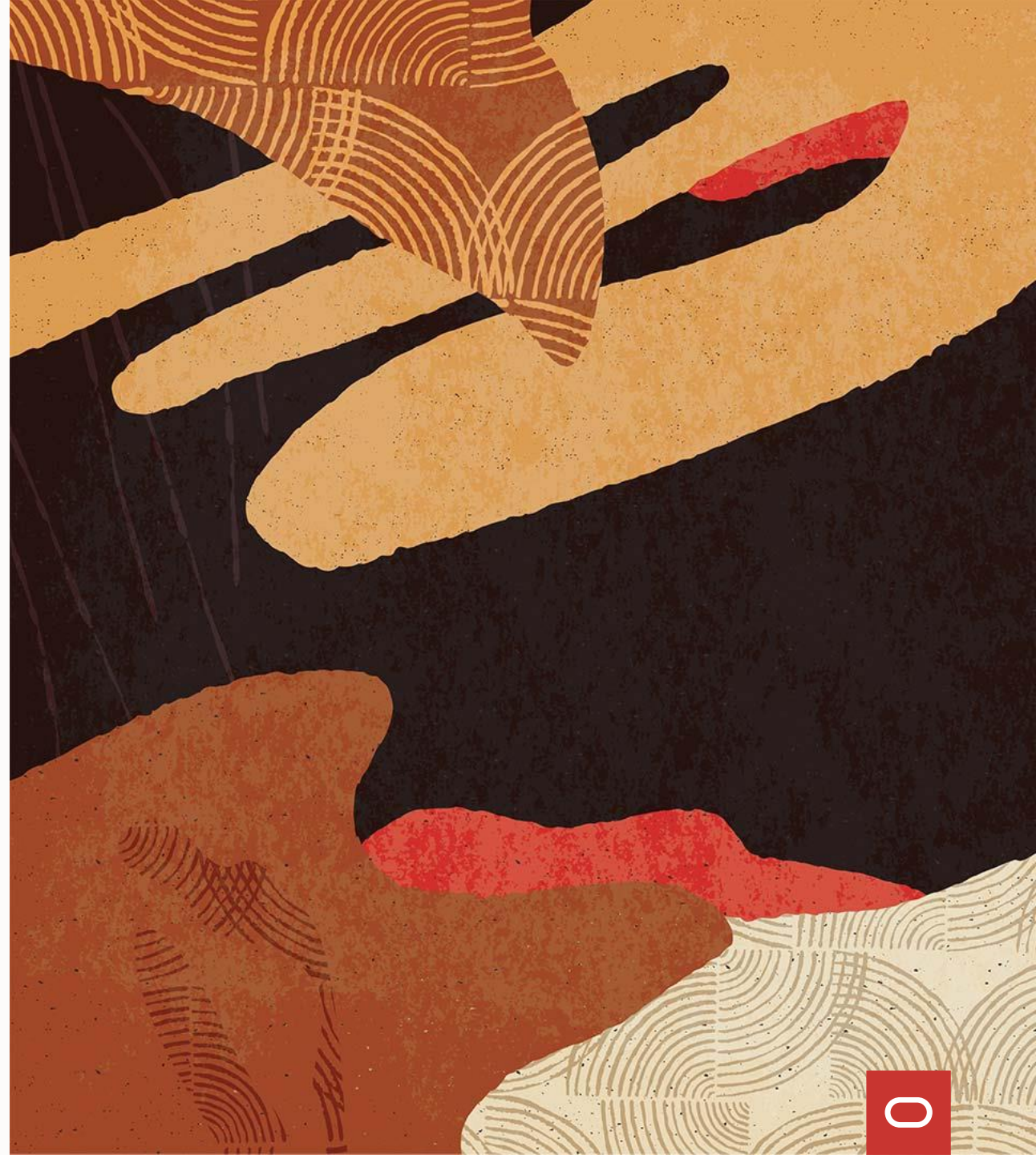


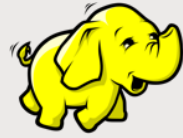
Big Data



Big Data Service

Data Flow





Data Management

Database – Data Lake - Access – Integration - Preparation

Infrastructure

CPU – GPU – Storage - Network

Oracle Big Data Service

Secure, reliable, elastic Hadoop/Spark clusters

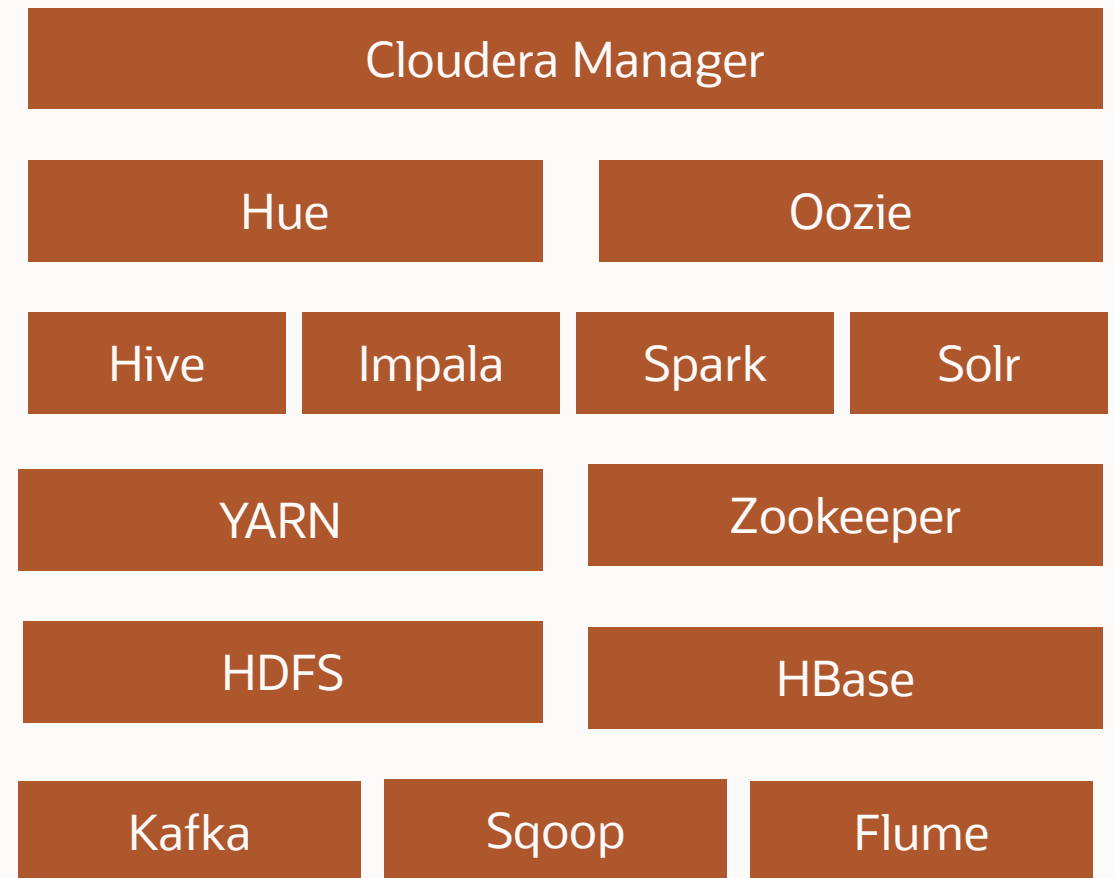
Native integration with Oracle Cloud Platform

Expand on-premises to Oracle Cloud


Most Complete Hadoop Platform

Use all of Cloudera Enterprise Data Hub

- Vertically integrated
- Spark, Kafka, Impala, Hive, Solr, etc.
- Security and management features automatically deployed



Sentry Authorization, Navigator Audit

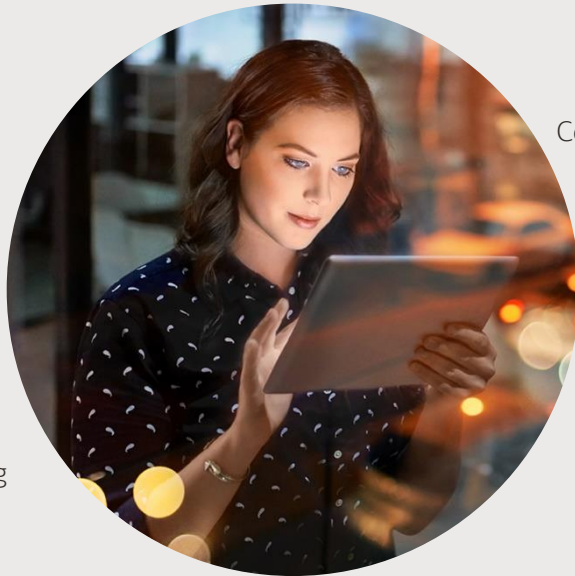
Near-zero operations 

 Cloud-native Security

Consolidated Insight 

 Simple troubleshooting

 Managed Output



Data Management

Object Store - ADW - ATP - RDBMS - Spark Compatible Sources

Infrastructure

CPU - GPU - Storage - Network

Oracle Cloud Infrastructure Data Flow

Deliver Big Data and Machine Learning Apps Faster

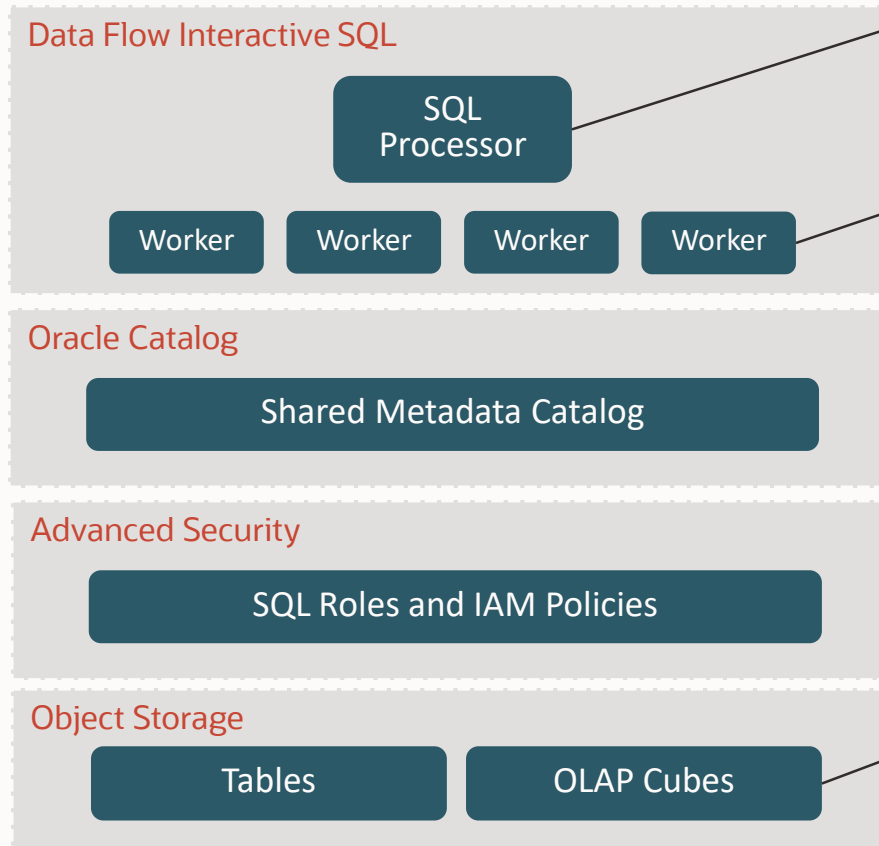
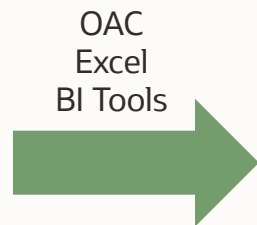
Fully managed Spark service with near-zero administrative overhead.

Import/run existing Spark apps from EMR, Databricks, or Hadoop.

Pay-as-you-go, elastic big data service.

Limited Availability 1H 2021

Data Flow Interactive SQL: Unstructured Analytics for Petabyte Scale



Spark SQL Query through ODBC, JDBC or Python.

Scale to 1,000s of cores instantly on commodity hardware.

Common metadata across Batch and Interactive clusters.

Granular security to the column level.

OLAP Cubes for up to 100x faster performance.

Object Storage for unlimited scale at low price.



AI / ML

OCI Data Science Service

OCI AI Services

Oracle SaaS Applications

Oracle Digital Assistant

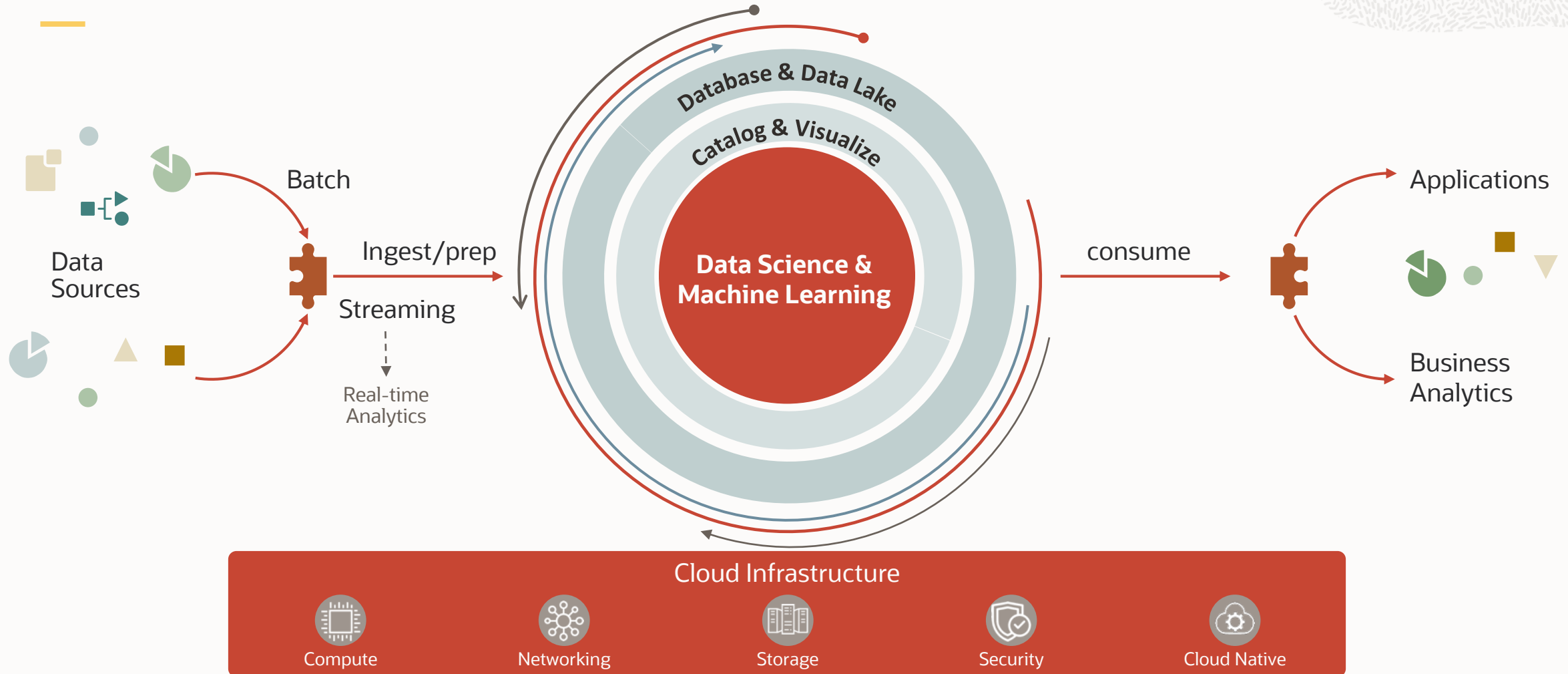
Oracle Machine Learning

Oracle Analytics Cloud



Oracle's Approach and Strategy

AI/ML in Database, Cloud Services, Analytics, and Applications



Our Differentiation

We've built a unified AI/ML platform that enables systems of intelligence across developers, data scientists, analysts, and business users

- People in different roles can easily collaborate on AI/ML outcomes
- E.g. Developer and Data Scientist can prepare and use the same data to build models using an AI service or a data science notebook and python

We're applying that platform to each of our products including Oracle's SaaS apps layer – Fusion, Netsuite, GBUs, etc. that enables sharing across them

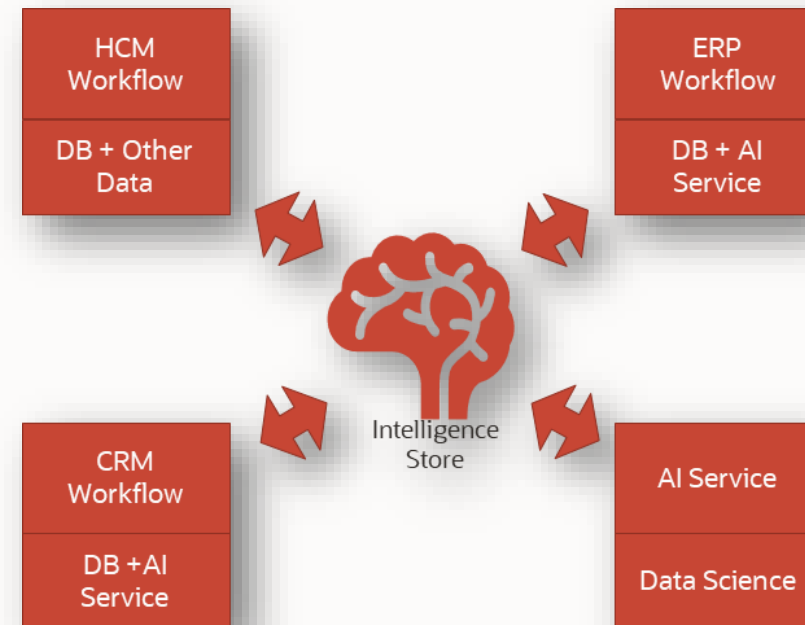
- This means each Oracle application and service gets better with use
 - E.g. customer service management app can automatically classify incoming support requests to the specific product team, based on AI language models that were trained on the specific list of products from Oracle's ERP Cloud.
- It also means you can easily extend the applications
 - E.g. Combine app data with other signals to create better predictions

How it works

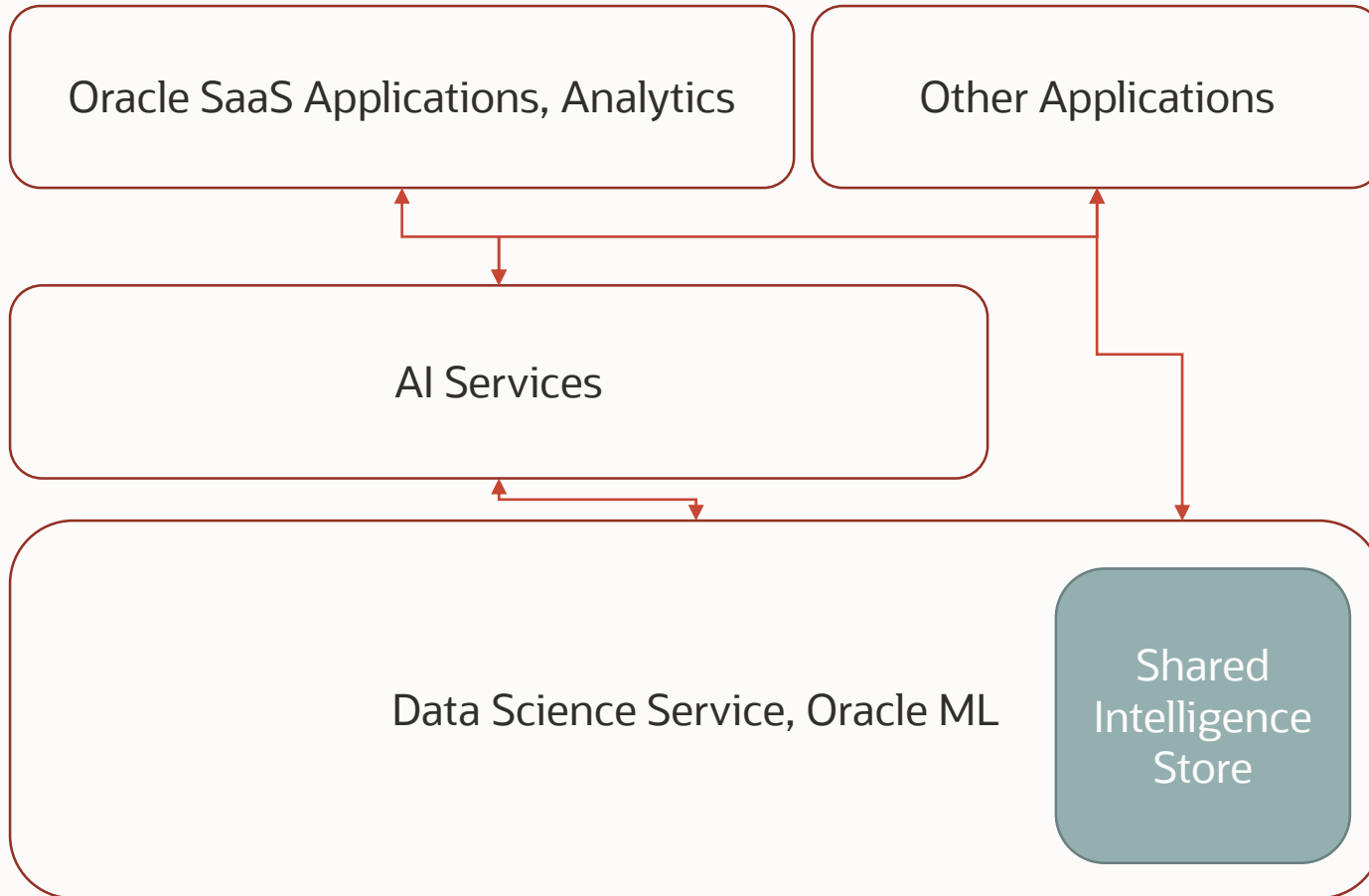


Introducing the Intelligence Store

- Problem
 - “80% of data science is data prep...”
 - Artifacts are not easily shared from one team/product/service to the next, often due to the lack of discovery, governance, and integration
- Solution
 - Formalize the ability to store, discover, understand, and consume ML artifacts
 - Includes support for ML models, embeddings, vectors, and other representations commonly used for model building and training



Intelligence Sharing across the Platform



- Intelligence store serves as central location for “ML artifacts”
- Analysts and Business users participate via applications and analytics
- Developers, and DBAs participate via AI services and OML
- Data Scientists participate via Data Science Service

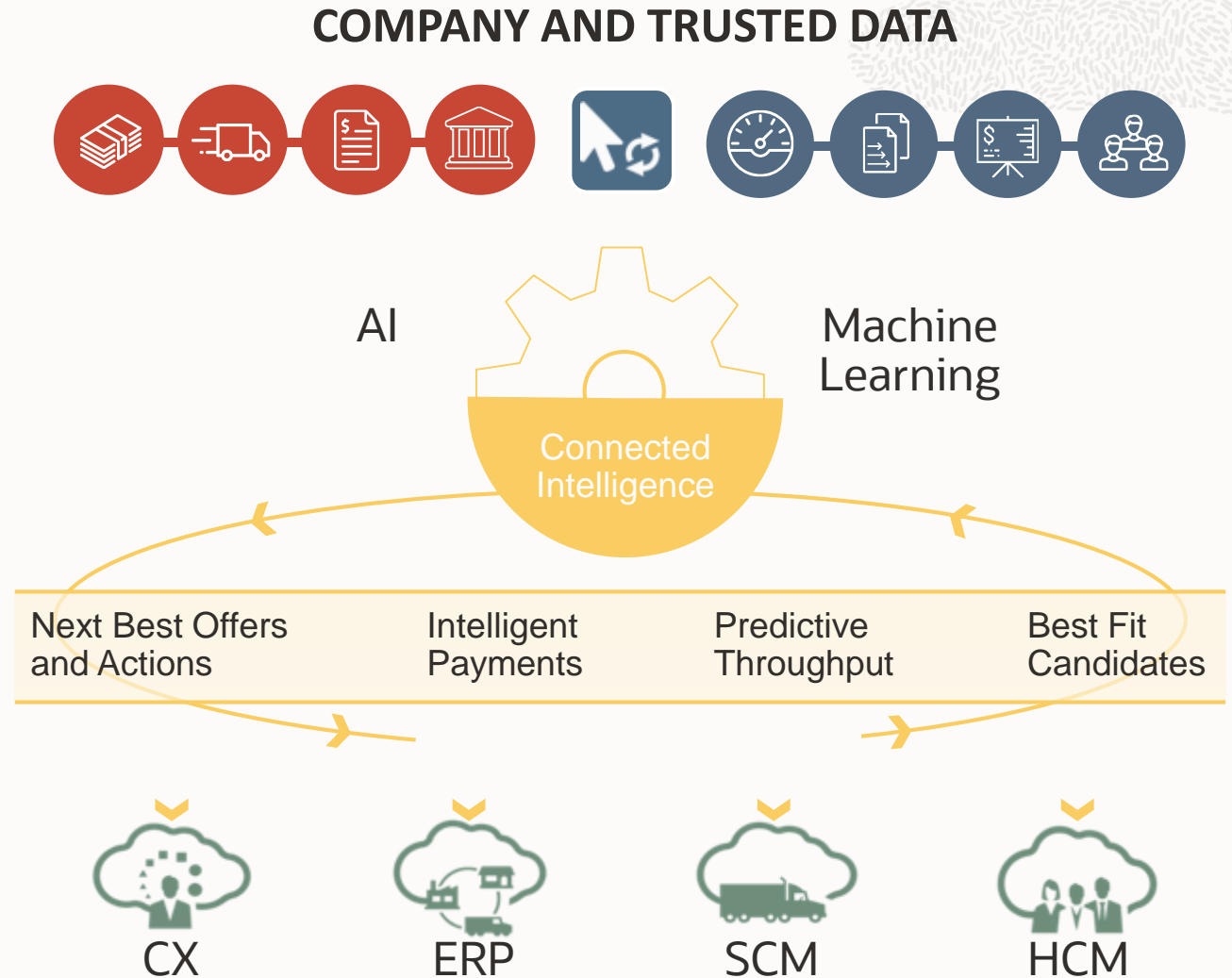


Products and Services

Oracle AI Applications

Ready-to-Go
Company and Trusted Data
Oracle Modern Cloud

CONNECTED INTELLIGENCE
Only Oracle Connects Outcomes Across Pillars
for Even Smarter Business Results





OCI AI Services

Language

Easily add language processing capabilities to solve common enterprise needs

Speech

Support for speech transcription, text to speech, translation, recognition

Vision

Document and form understanding, OCR, object detection, classification

Decision

Anomaly detection, fraud detection, next best action



Oracle Cloud Infrastructure Data Science

Support for Python and open source

Accelerated

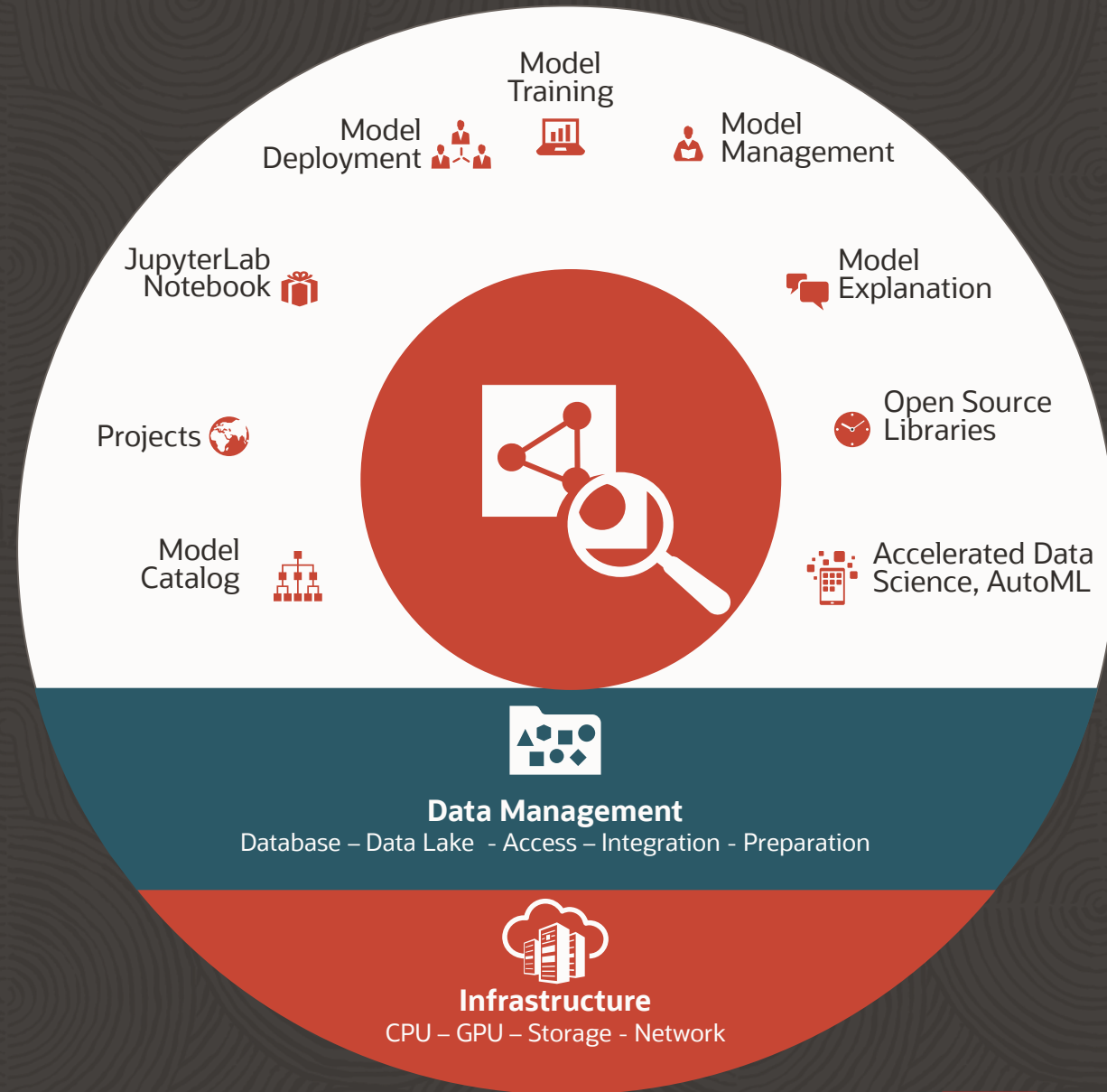
Allow data scientists to work the way they want to, and provide access to automated workflows, the best of open source, and a streamlined approach to building models.

Collaborative

Enable data science teams to work together with ways to share and reproduce models in a structured, secure way for enterprise-grade results.

Enterprise-Grade

Provide a fully managed platform built to meet the needs of the modern enterprise



Oracle Machine Learning

In-database machine learning

Automated

Available support for SQL, R and Python

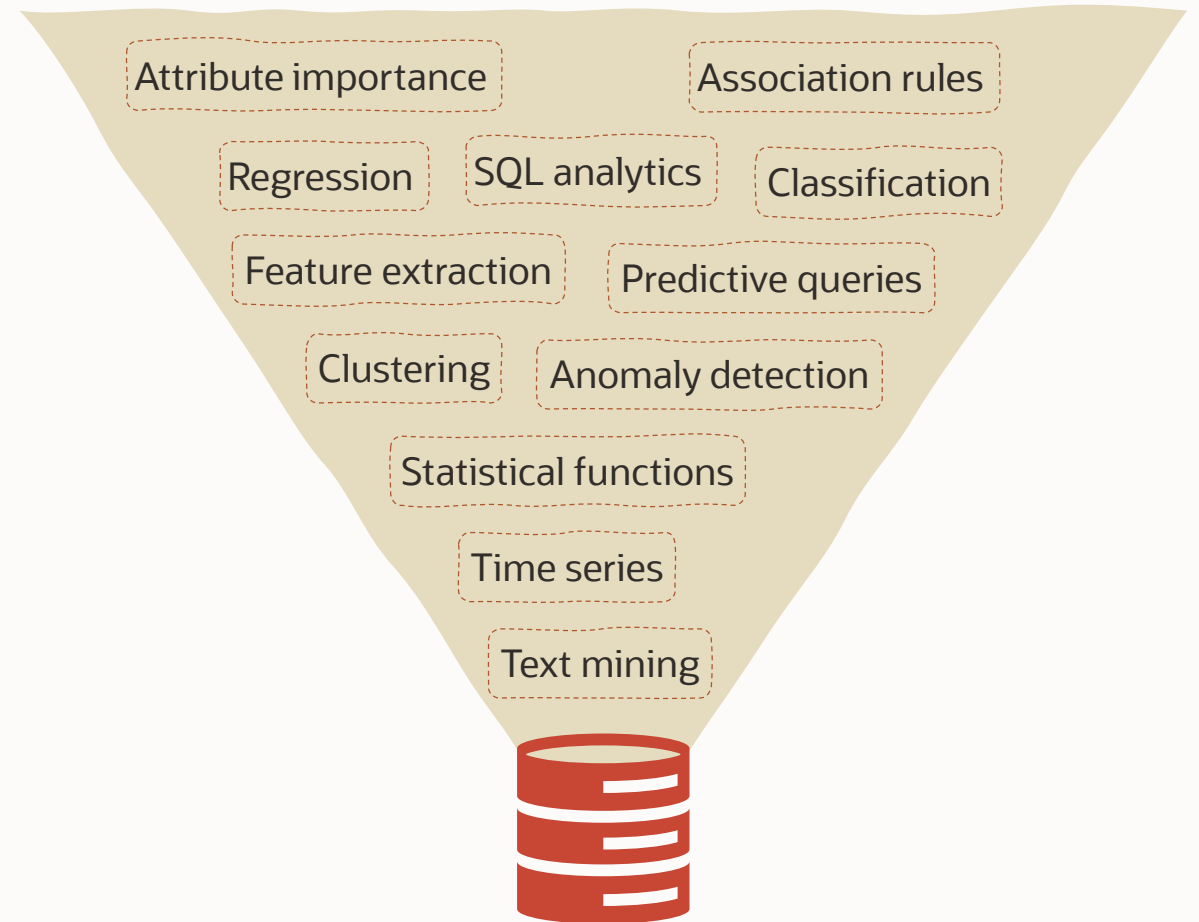
Automated data preparation

Scalable

30+ high performance, parallelized in-database machine learning algorithms that require no data movement

Production-ready

Quickly deploy and update machine learning models in production databases, or via REST APIs



Oracle Analytics Cloud

Collaborate with business analysts

Data visualization and exploration

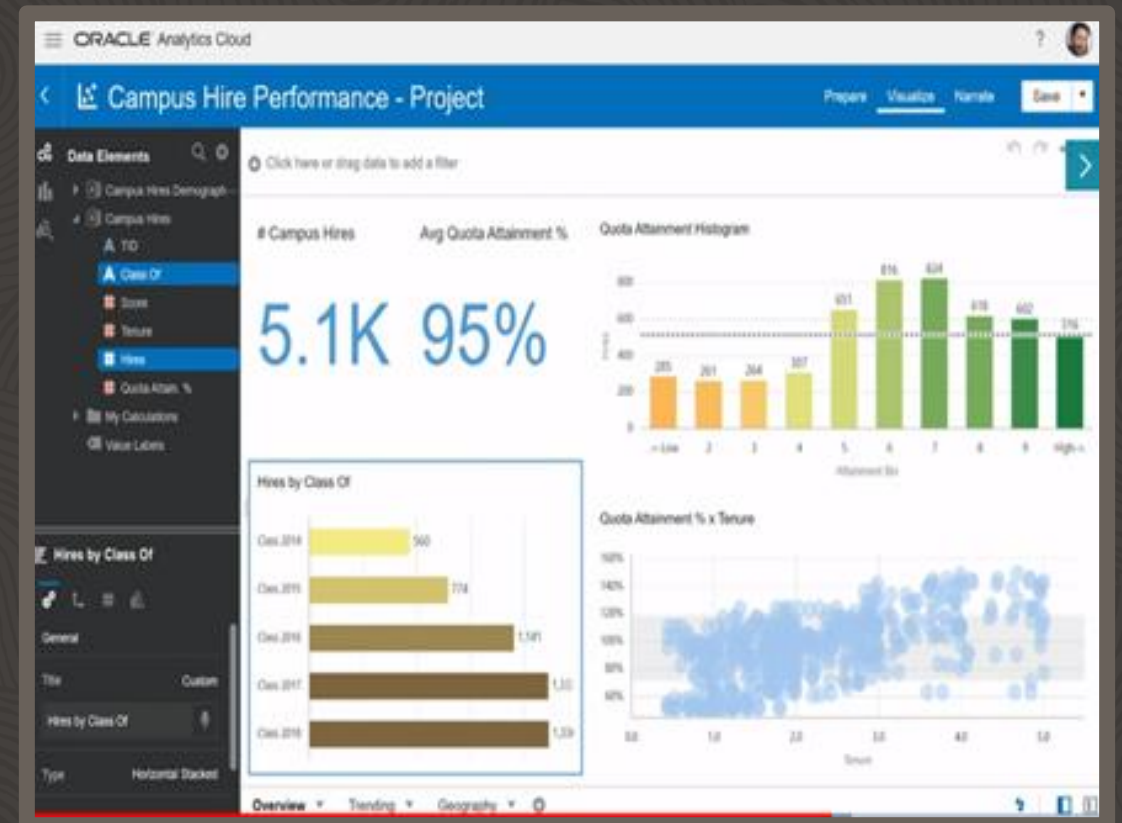
Enable business analysts to develop insight on business problems via data and communicate clearly with data scientists.

Data preparation

Build workflows to clean and prepare data for modeling

Descriptive and prescriptive analytics

Enable business analysts to build and prototype models to improve communication and understanding.



What's Next?



Roadmap



- AI Services – More coming...
 - Vision, speech, language, and decision
 - Vertical (healthcare, manufacture, etc.)
 - Horizontal (Contact center, cognitive search, etc.)
- SaaS application integration
 - Oracle SaaS horizontal (ERP, HCM, etc.), vertical (Finance, energy, etc.)
- Orchestration across Dev Ops and AI Ops – Data and ML lifecycle
 - Seamless experiences across data ingestion, data preparation, model development, training, deployment, monitoring

Join the Data & AI Beta Program!

Get early access to the new features in OCI Data & AI Services

Our Beta Program in a nutshell

- A one-time signup process gives you access to all the beta features for OCI Data Science, Data Flow, Data Integration, and Data Catalog services.
- Opt into any or all the features you want early access.
- Meet with the product managers and give them your feedback!

Current Beta Programs:

Beta Program	Description	Timeline	Who to Contact
Data Science Model Deployment	Model Deployment gives data scientists the ability to easily deploy models as HTTP endpoints directly from the model catalog.	Now - March 19, 2021	jr.gauthier@oracle.com
Data Integration Pipeline Orchestration	Scheduling and orchestration of data loader and data integration tasks	Now – March 31, 2021	sandrine.ost@oracle.com julien.testut@oracle.com



ORACLE