

A comprehensive overview of the oncology drug and trial landscape

Gain confidence with your clinical and commercial decision making in an evolving oncology landscape

Features

Oracle Life Sciences CancerMPact's CancerLandscape provides a visual and interactive view of the drug and trial landscape with weekly updates. Use oncology-specific clinical and commercial filter options to make quick comparisons, uncover trends and identify threats/opportunities.

- Visual design provides intuitive user-experience
- Coverage of major registries - clinicaltrials.gov, EUCTR, jRCT
- Trial Change Analytics - capture key trial transitions and events
- Enhanced patient segmentation, line of therapy delineation and biomarker coverage
- "What's New?" to track new trial/drug/companies
- Visualize trends and read the latest trial news
- Saved searches / custom views

Benefits

Drug/trial intelligence with oncology detail:

Query elements (e.g. line of therapy, biomarker) not easily standardized to better inform clinical and commercial decisions

Visual user interface:

Click to navigate and identify emerging targets, novel technologies, trial strategies, deal opportunities and link to benchmark and pivotal trials profiled within Treatment Architecture and Future Trends and Insights

Portable data:

Easily download graphics (pptx) and data (xlsx) for presentations and additional analyses

Clinical and scientific support:

Full access to the CancerMPact Oncology Support team



Search and refine

Trial

- Phase (I, I/II, II, II/III, III, IV, approved)
- Status (e.g. recruiting, completed)
- Arm (experimental, control)
- Country / region
- Domestic / global
- Start / end / primary completion date
- Registry (clinicaltrials.gov, EUCTR, jRCT)
- Primary endpoint (e.g. survival, response, safety)
- Pivotal trial outlook – links to Future Trends and Insights
- Benchmark trial reference – links to Treatment Architecture
- Event analytics to flag recent changes
- Published trials – links to PubMed
- Trial results - links to clinicaltrials.gov
- Latest news and events

Company

- Sponsor (trial)/owner (drug)
- Sponsor class (industry, academic)
- Size (private vs. public (small-, med-, large-cap))

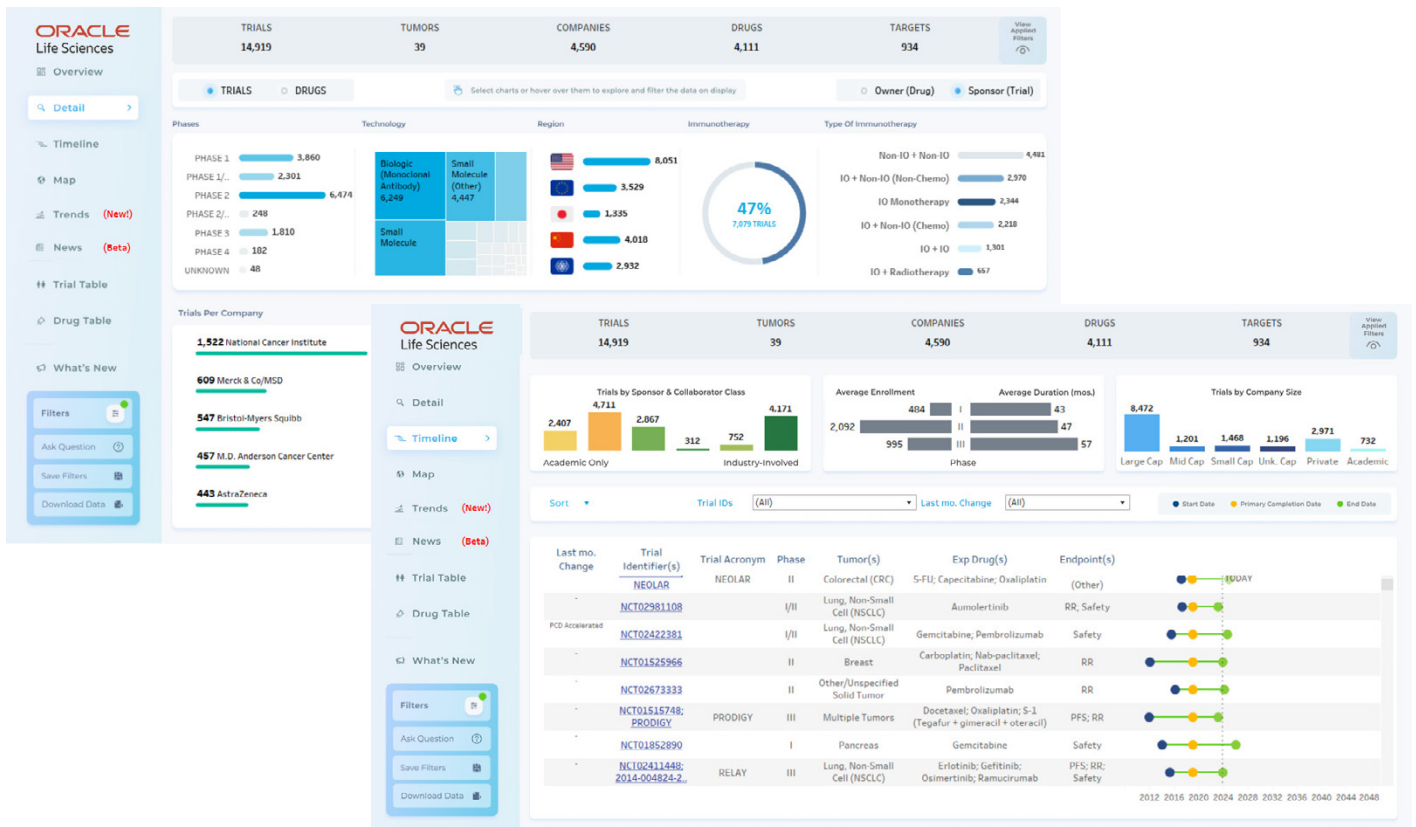
Tumor

- Tumor type/subtype (mesh term)
- Patient segment (e.g. ECOG, fitness, platinum eligibility/sensitivity, Child-Pugh, risk status, transplant eligibility)
- Setting (1L, 2L, 3L, 4L+, maintenance, neo/adjuvant)
- Biomarker (full set of regulatory approved biomarkers, e.g. ALK, BRAF, FLT3, HRD, IDH, MSI, PDL1, RAS, TMB)

Drug

- Name (brand, generic, research)
- Target (e.g. PD-1, CD19, EGFR)
- Technology (e.g. ADC, mAb, CAR-T, bispecific, TKI)
- Immunotherapy combinations (mono, combo, ICI, non-ICI)
- Highest phase of development, by tumor type and overall

Example dashboard view



Improving business outcomes through empowered decision making

Oracle Life Sciences CancerMPact is an invaluable and comprehensive oncology decision support resource. It can be utilized for market analysis, strategic planning and identification of commercial opportunities in the U.S., Western Europe, Japan and China. This resource is composed of cloud-based integrated modules: Patient Metrics (Patient Metrics – Core, Patient Metrics – Expanded Markets, PM Dashboards, and Biomarker Analysis), Treatment Architecture, Treatment Architecture Trends, and CancerLandscape.

1. Patient Metrics

Best-in-class cancer epidemiology and proprietary patient calculations for target markets.

Patient Metrics Core – U.S., Western Europe, Japan, China – combines epidemiologic data and analysis to estimate incidence (annual new cases of cancer) by stage; restaged 5-, 10-, or 15-year prevalence (annual surviving cancer patients from up to 15 years prior that accounts for progression to later stages); active disease (estimate of treatment-eligible patients by stage that does not include early-stage patients in remission); and treated patient populations by modality (surgery, radiation, drug therapy, etc.), drug regimens and drug agents.

Patient Metrics Expanded Markets – Combines epidemiologic data and analysis to estimate incidence (annual new cases of cancer) by stage; five-year prevalence (annual surviving cancer patients from up to five years prior; and treatable patients for up to 16 tumor types. Available for Argentina, Brazil, Canada, India, Mexico, Russia, South Korea, Taiwan and Turkey.

PM Dashboards – Interactive, multi-country views of the epidemiology and treatment of cancer, making comparisons across geographies, patients and tumors much easier. PM Dashboards features six interactive dashboards to allow you to more quickly and easily evaluate global trends in cancer epidemiology.

Biomarker Analysis – Expert analysis of key oncology biomarker segments. Biomarker Analysis is a global resource based on a thorough review of literature and recently published data that discusses the current and evolving oncology landscape with regard to biomarker segmentation rates and geographic, survival, ethnic, racial and gender differences.

2. Treatment Architecture

In-depth quantitative analysis of oncology drug and modality utilization across all cancer disease stages.

Treatment Architecture assesses the current clinical management of cancer patients by site and stage for all treatment modalities – including surgical, radiologic and systemic agents, as well as untreated patient populations. Treatment Architecture also provides pivotal clinical trial summaries to highlight the benchmark outcomes contributing to standard-of-care designations. Drug utilization is captured for all treatment settings and lines of therapy and by patient type in tumors where biomarkers have segmented the drug market.

3. Treatment Architecture Trends

Analytics for in-depth exploration of historical treatment patterns.

Treatment Architecture (TA) Trends allows for customized data exploration, powerful analytics, and impactful visualization of a wide variety of treatment data. TA Trends provides historical global treatment patterns allowing for analysis of the impact of market events on share and uptake of drugs and drug classes. A broad set of diagnostics, modality, drug, and outcomes data can be queried and filtered by stage, patient segment, drug technology, target, regimen, physician specialty, physician treatment setting and country.

4. Future Trends and Insights

Expert analysis of the changing oncology competitive landscape with focus on ongoing pivotal clinical trials.

Future Trends and Insights explores potential changes in treatment practices in the U.S., Western Europe and Japan based on a critical evaluation of recently published clinical data, regulatory advances/ setbacks and ongoing pivotal clinical trials. It identifies key trends in each tumor market, which can comprise new product introductions or label expansions of marketed products. It also assesses unmet needs for each cancer while continuously monitoring the competitive environment.

5. CancerLandscape

A visual, comprehensive overview of the oncology drug and trial landscape

CancerLandscape combines and standardizes U.S., EU, and Japan trial registries with other data sources to provide a visual and detailed understanding of the oncology trial landscape by company, tumor, drug and target. Users have the ability to filter on detailed clinical and commercial variables, make quick comparisons, uncover trends, and evaluate trial timing and enrollment. Gain insights about the oncology landscape in detail with a simple interface that is updated on a weekly basis. Clinical and scientific support is provided by the Oracle Life Sciences oncology support team.

