

Oracle Enterprise Command Centers

Exploit information-driven navigation to discover and act on your most important business challenges.

Enterprise application users have access to millions of transaction records and attached documents, yet they are unsure of what to work on next. While there are screens for entering and querying data, there is little to guide users to today's most important business challenges. Users typically rely on IT-produced reports or custom inquiry screens to identify operational problems and exceptions such as stuck orders or delayed projects. But these reports often reflect stale data and fail to reveal root causes. Users need a way to quickly identify and act on today's most important business challenges.

Identify and Act on Top Priorities without Custom Operational Reporting

Oracle Enterprise Command Centers are aimed at solving the problem of what users should work on next. Included with Oracle E-Business Suite, Oracle Enterprise Command Center dashboards enable information-driven navigation to help users focus on the right information, at the right time, to make the right decisions.

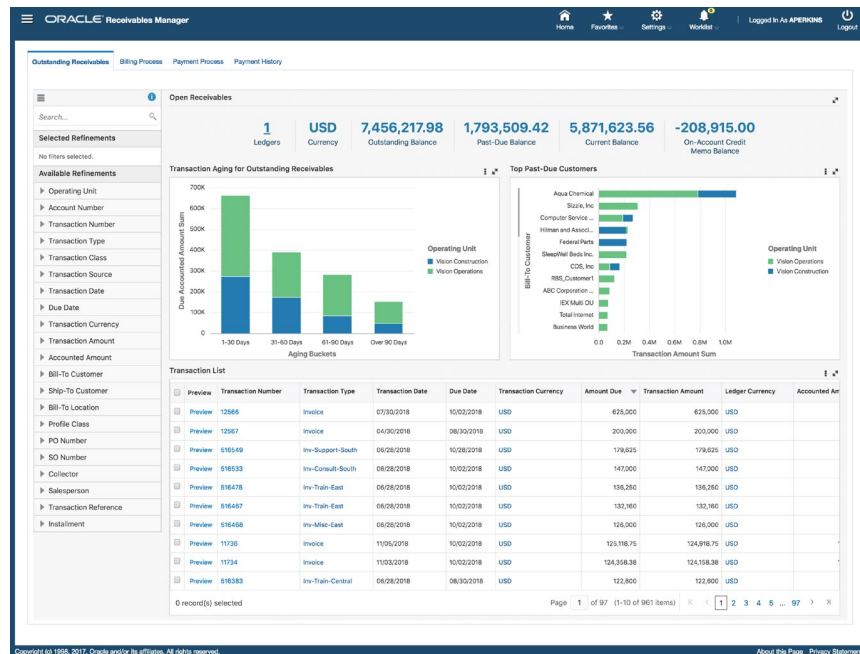
ORACLE®

E-BUSINESS SUITE

"Oracle Enterprise Command Centers are fully integrated with Oracle E-Business Suite to enable enterprises to optimize operational decisions and improve process efficiency with real-time access to operational data, driving better cost and revenue decisions."

KEY FEATURES

- Actionable indicators
- Consumer-like search and filters
- Instant search results
- Search across organizations
- Saved search for frequently-used filters
- Interactive visualizations
- Guided navigation
- Tag clouds
- Charts
- Fully integrated with Oracle E-Business Suite security and page flows
- Available for both desktop and mobile devices
- Multilingual Support (MLS)
- Extensible with Oracle Enterprise Command Center Framework



Each Oracle Enterprise Command Center extends the owning Oracle E-Business Suite application with discovery-oriented dashboards that bring together diverse operational data from across Oracle E-Business Suite. With tools and visualizations such as actionable indicators, tag clouds, interactive charts, and consumer-like search and filters, users can browse and drill on whatever engages their attention. With each drilldown or search refinement, the entire interface recomputes, revealing new information on which to base next discovery steps. Through this “conversation with the data”, users narrow in on today’s most important business challenges, all without predefined navigation paths, structured queries, or operational reports.

Having identified the most pressing business challenges, users seamlessly transition to detailed transaction screens to take immediate, informed action. Transaction screens are pre-populated with the results of information discovery — no re-querying of data is required. Users can switch between information discovery and transaction screens as they work their way through a set of identified problems, retaining the current discovery context.

Leverage Existing Oracle E-Business Suite Investment

Enterprises can add Oracle Enterprise Command Center dashboards to Oracle E-Business Suite with minimal setup or effort, and minimal disruption to current operations. Using a simple all-in-one installer, enterprises can rapidly deploy Oracle Enterprise Command Centers, achieving seamless, out-of-the-box integration with Oracle E-Business Suite applications. With rapid deployment, users can be up and running very quickly, analyzing current Oracle E-Business Suite information.

Unlike a traditional data warehouse, which typically requires replication of security setups from the transaction system, Oracle Enterprise Command Centers automatically adhere to existing Oracle E-Business Suite security. Dashboard content a user sees is fully consistent with Oracle E-Business Suite context and security.

Leverage Command Centers Across Oracle E-Business Suite

Oracle Enterprise Command Centers are available at no additional cost to licensed users of the owning Oracle E-Business Suite applications. They can be applied to Release 12.2.4 and higher. The following command centers are currently available:

- » **Financials:** General Ledger, Receivables, iReceivables, Payables, Employee Expenses (Internet Expenses), Assets, Cash Management, Lease Contracts, Lease and Finance Management.
- » **Procurement & Projects:** iProcurement: Consumer-Like Shopping, Procurement, Projects, Project Procurement, Contract Lifecycle Management for Public Sector.
- » **Order Management & Logistics:** iStore: Modern Shopping Experience, Advanced Pricing, Order Management, Inventory Management, Landed Cost Management, Channel Revenue Management, Incentive Compensation.
- » **Manufacturing:** Bills of Material, Discrete Manufacturing, Process Manufacturing, Outsourced Manufacturing, Project Manufacturing, Cost Management, Quality.
- » **Asset Lifecycle & Service:** Enterprise Asset Management, Asset Tracking, Service Contracts, Service (TeleService), Field Service, Depot Repair.
- » **Human Capital Management:** Human Resources, Payroll.

KEY BENEFITS

- Identify and act on top priorities without custom operational reporting
- Access from mobile or desktop devices, and with high performance
- Experience quick user adoption
- Improve data communication with support for a variety of visualizations and charts
- Deploy rapidly, with no change to the Oracle E-Business Suite database
- Leverage out-of-the-box UI and security integration
- Analyze structured and unstructured Oracle E-Business Suite information
- Flexibly meet new business requirements through configuration instead of coding
- Update dashboard design and visualizations
- Expose additional data in the EBS instance on the dashboard

CONNECT WITH US

-  blogs.oracle.com/oracle
-  facebook.com/oracle
-  twitter.com/oracle
-  oracle.com

FOR MORE INFORMATION

Contact: 1.800.ORACLE1