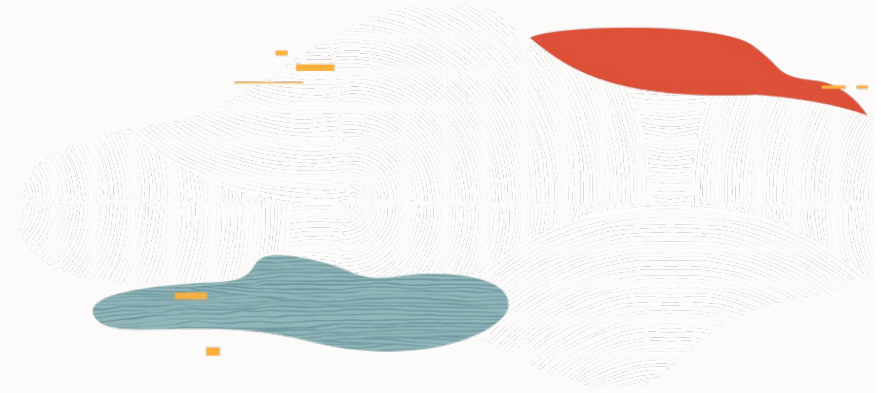




ORACLE



Oracle Modern Best Practice

Digital Business Processes for Higher Education





Safe harbor statement

The following is intended to outline our general product direction. It is intended for information purposes only, and may not be incorporated into any contract. It is not a commitment to deliver any material, code, or functionality, and should not be relied upon in making purchasing decisions.

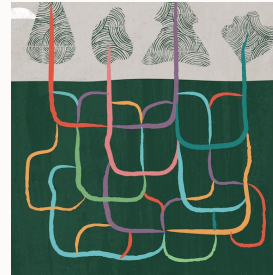
The development, release, timing, and pricing of any features or functionality described for Oracle's products may change and remains at the sole discretion of Oracle Corporation.

What is Oracle Modern Best Practice?

www.oracle.com/modernbestpractice



Digital business processes that evolve with you



End-to-end across the organization



Radically superior results



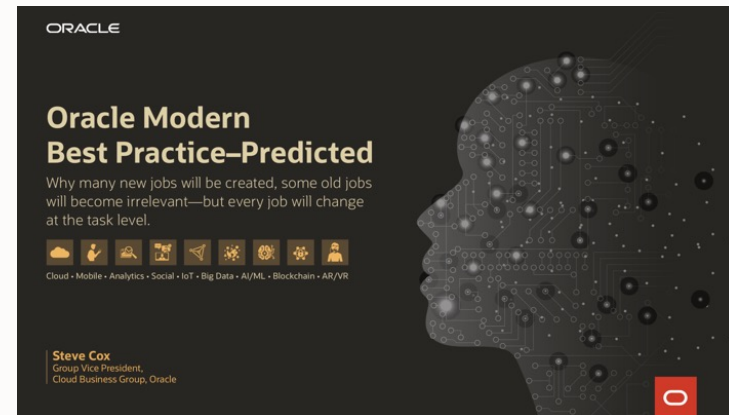
Leverages emerging technologies



Oracle Modern Best Practice books



The original book on Oracle Modern Best Practice is now in its 3rd edition and is available at <https://go.oracle.com/LP=88653>



A new book with our vision for processes in the future is available at <https://go.oracle.com/LP=88688>



Oracle Modern Best Practice

Designed for change – evolves with you

220+

Open, Standard, Free

Finance • Budget to Approval • Asset Acquisition to Retirement • Bank Transaction to Cash Position • Expense Report to Reimbursement • Supplier Invoice to Payment • Customer Invoice to Receipt • Customer Statement to Collection • Daily Close to Financial Forecast • Period Close to Financial Reports • Customer Contract to Revenue

Procurement • Supplier Registration to Supplier Performance • Insight to Smart Sourcing • Contract Creation to Spend Compliance • Requisition to Receipt • Supplier Return to Settlement

Project Management • Opportunity to Project Approval • Resource Analysis to Utilization • Project Methodology to Delivery • Task Detail to Plan Adjustment • Project Costs to Accounting • Billing to Revenue Recognition • Grant Award Funding to Closeout • Capital Project to Asset

Risk Management • Security Design to Separation of Duties • Business Process Risk to Continuous Assurance • Audit Scoping to Financial Reporting Compliance • Risk Identification to Organization Readiness

Marketing • Analytics to Insight • Insight to Campaign ROI • Campaign Execute to Lead • Event Execute to Lead • Disparate Sources to Unified Data • List Import to Prospect

Sales • Social Prospect to Lead • Lead to Opportunity • Opportunity to Quote • Quote to Order • Order to Close Opportunity • Opportunity to Forecast • Sales Play to Key Account Opportunity • Schedule Change to Sales Call • Vendor Lead to Channel Opportunity • Channel Lead to Vendor Opportunity

Sales Performance Management • Sales Strategy to Execution • Coaching Plan to Performance • Incentive Plan to Payment

Service • Customer Contract to Resolution • Social Listing to Resolution • Service Request to Dispatch • Knowledge Gap to Solution • Sensor Alert to Preventive Maintenance • Customer Sentiment to Preventive Maintenance

Commerce • B2C: Multi-Channel to Omni-channel Experience • B2C: Awareness to Interaction • B2C: Interest to Purchase • B2B: Multi-Channel to Omni-channel Experience • B2B: Product Search to Cart • B2B: Cart to Agreement

Logistics • Shipment to Dispatch • Inbound Shipment to Receipt • Freight Invoice to Approval • Lane Forecast to Carrier Contract

Order Management • Multi-channel Order to Promise • Fulfillment Orchestration to Invoice • Order to Drop Shipment

Manufacturing • Forecast to Plan • Production Order to Cost Update • Contract Manufacturing Request to Delivery

Innovation • Social Monitoring to Idea Capture • Idea Capture to Business Case • Requirement Definition to Optimization • Concept Formation to Design • Product Proposal to Go-to-Market Candidate • Portfolio Review to Selection

HR & Talent • Recruit to Onboard • Benefits to Payroll • Time Collection to Payroll • Payroll to Payment • Goal Setting to Performance Improvement • Career Planning to Development • Talent Review to Succession • Absence Planning to Productivity Improvement • Incident Report to Workplace Safety • Employee Insight to Workforce Wellness • Employee Separation to Workforce Analysis

Industry: Retail • Public Entity • Higher Education • Insurance • Banking • Healthcare • Utilities



Modern Best Practice for Higher Education



Finance

- Asset Acquisition to Retirement
- Budget to Approval
- Expense Report to Reimbursement
- Supplier Invoice to Payment
- Bank Transaction to Cash Position
- Daily Close to Financial Forecast
- Period Close to Financial Report



Procurement

- Insight to Smart Sourcing
- Requisition to Receipt
- Supplier Return To Settlement



Student Affairs and Admissions

- Digital Student to Lead
- Digital Student Lead to Applicant
- Digital Student Relate to Retain



Project Management

- Initiation to Sponsored Project Plan
- Sponsored Project Execution to Control
- Sponsored Project Expenditure to Cost Control
- Sponsored Project Contract to Revenue
- Grant Award Funding to Closeout
- Analysis to Sponsored Project Optimization



HR and Talent Management

- Recruit to Onboard
- Benefits to Payroll
- Payroll to Payment
- Time Collection to Payroll
- Goal Setting to Performance
- Career Planning to Development
- Talent Review to Succession
- Absence Planning to Continuity
- Employee Insight to Work-Life Alignment
- Employee Separation to Workforce Analysis



ORACLE

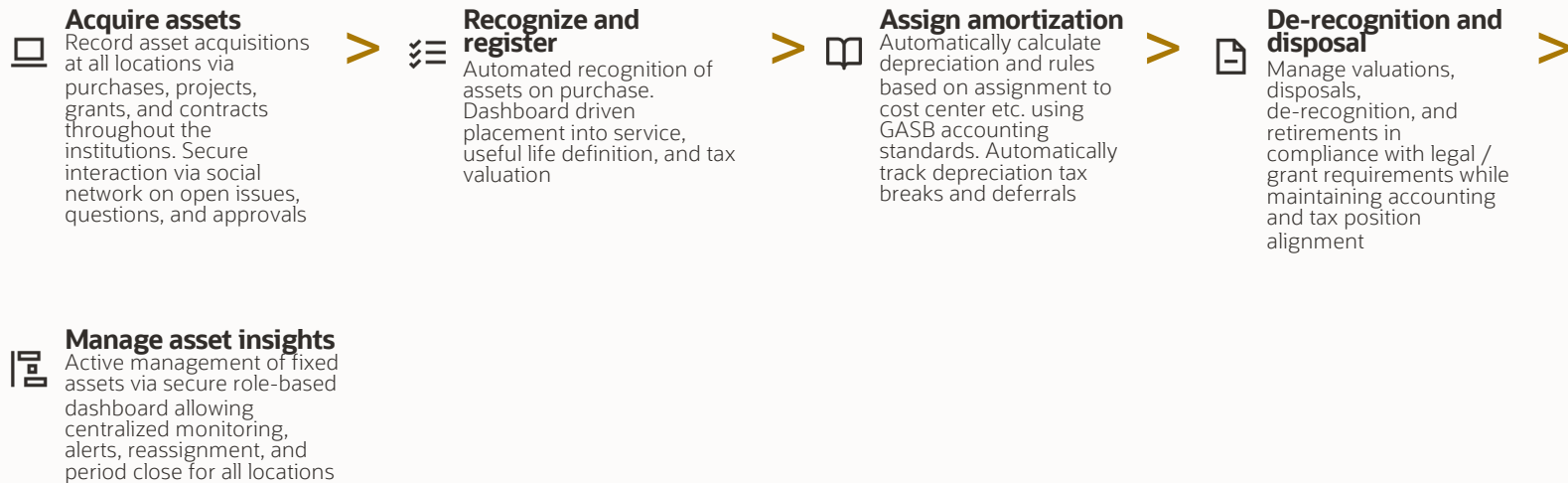


Modern Best Practice for Higher Education- Finance



Oracle Modern Best Practice

Asset Acquisition to Retirement Higher Education



Product Mix: ERP
Popular KPIs: asset aging, asset cost distribution, % fixed asset loss

Cloud Mobile Analytics Social



Oracle Modern Best Practice

Budget to Approval

Higher Education

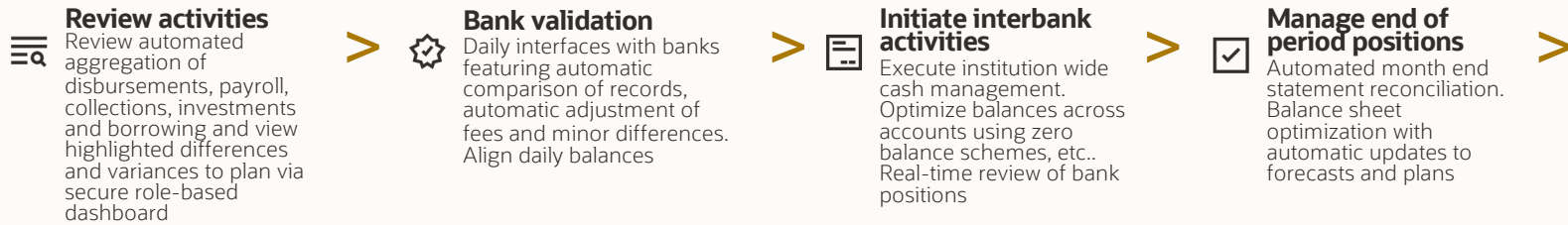


Product Mix: ERP, EPM
Popular KPIs: time to produce/approve/consolidate budget, % variance



Oracle Modern Best Practice

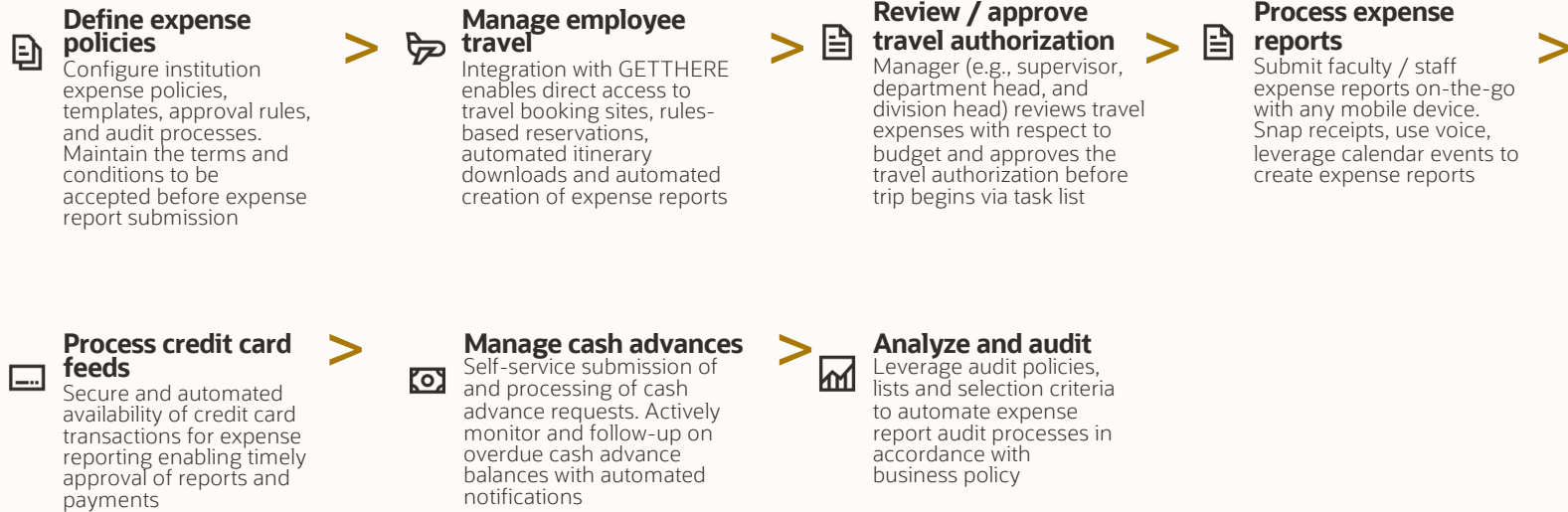
Bank Transaction to Cash Position Higher Education



Product Mix: ERP
Popular KPIs: time to reconcile, no. of reconciliations



Oracle Modern Best Practice Expense Report to Reimbursement Higher Education



Product Mix: ERP
Popular KPIs: expense vs. budget, expense as % of revenue, payment cycle

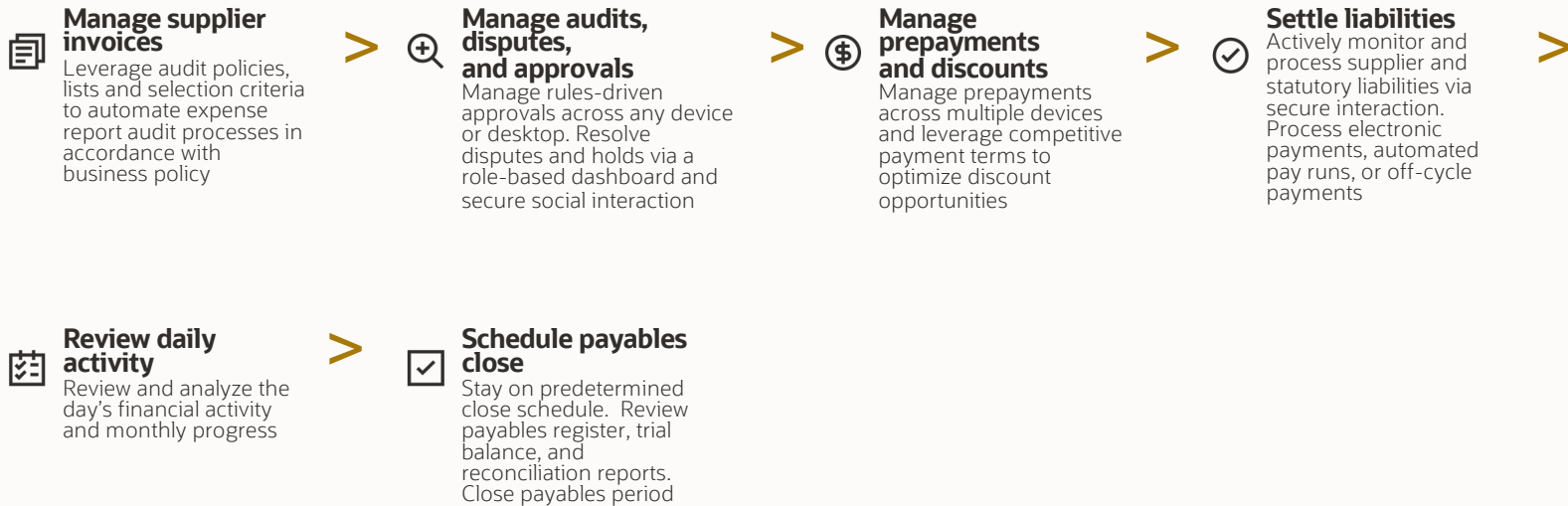
Cloud Mobile Analytics Social AI/ML



Oracle Modern Best Practice

Supplier Invoice to Payment

Higher Education



Product Mix: ERP
Popular KPI: no. of payments, invoice payment days, % discount taken

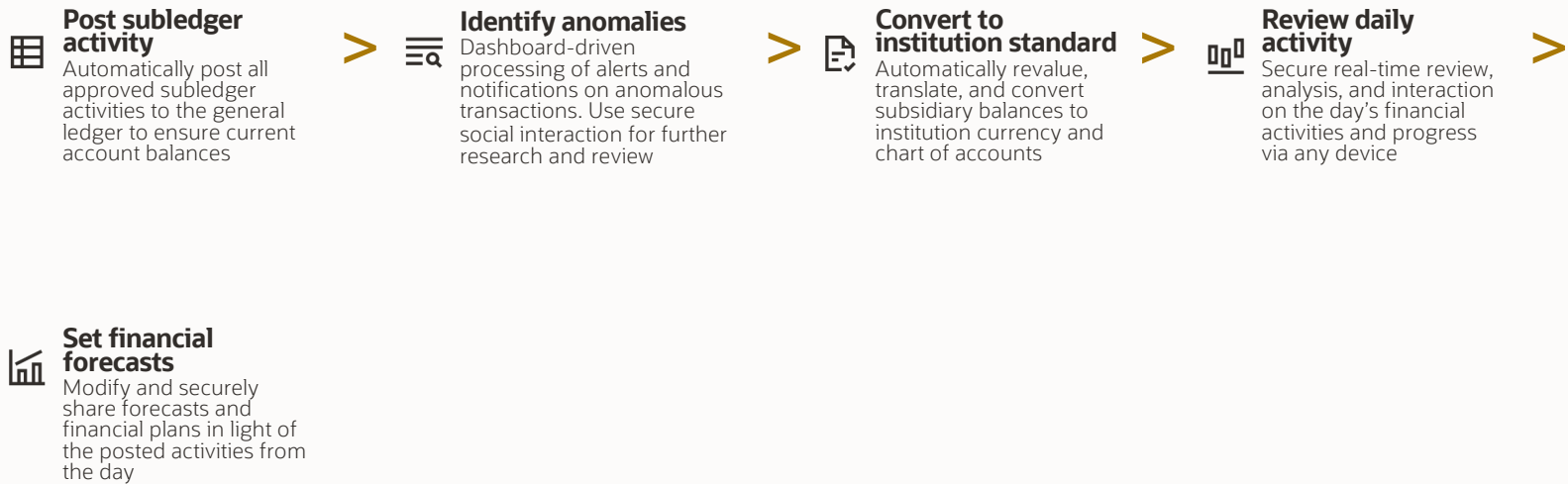
Cloud Mobile Analytics Social AI/ML



Oracle Modern Best Practice

Daily Close to Financial Forecast

Higher Education



Product Mix: ERP, EPM
Popular KPIs: time to reconcile, no. of reconciliations

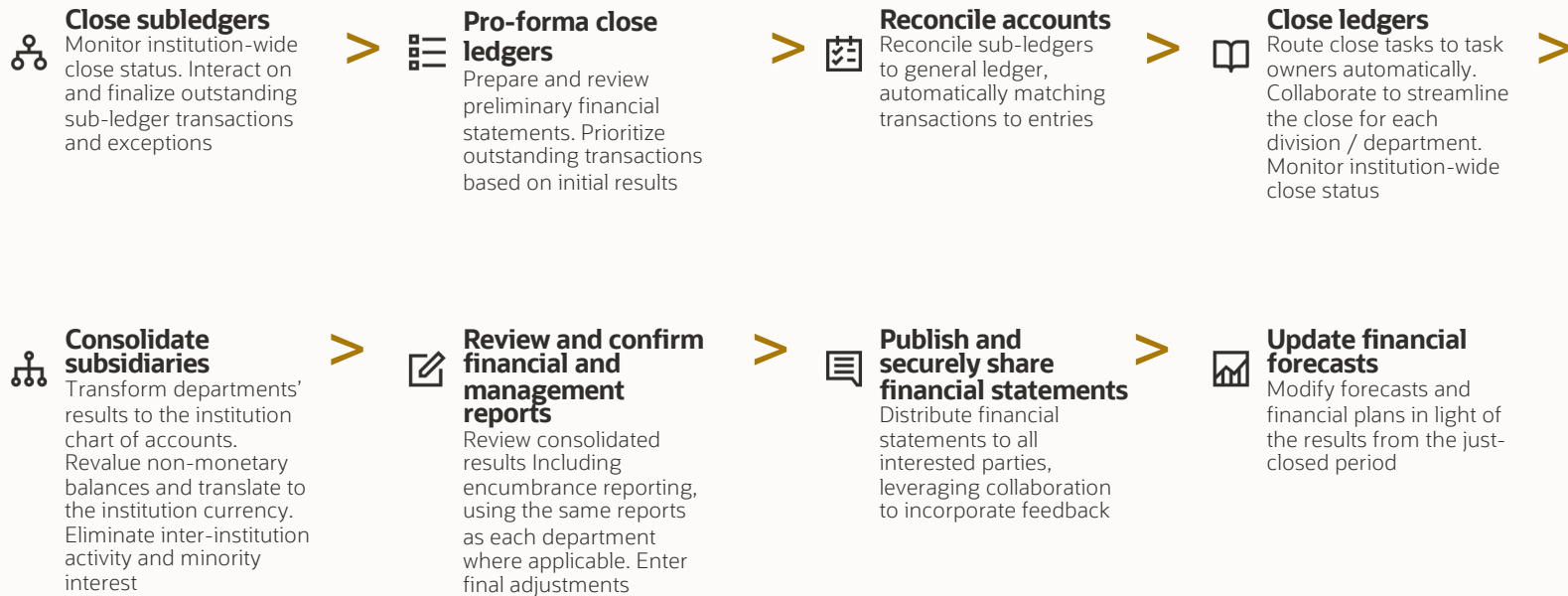
Cloud Mobile Analytics Social



Oracle Modern Best Practice

Period Close to Financial Reports

Higher Education



Product Mix: ERP, EPM
Popular KPIs: time to close books, time to publish reports



ORACLE



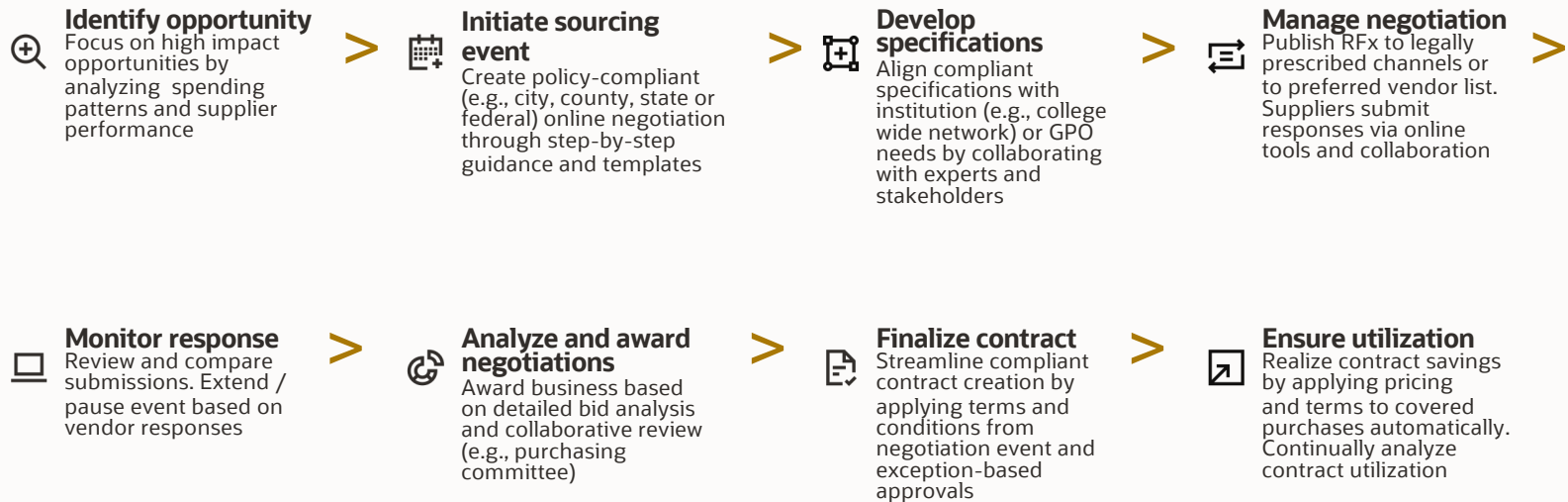
Modern Best Practice for Higher Education - Procurement



Oracle Modern Best Practice

Insight to Smart Sourcing

Higher Education



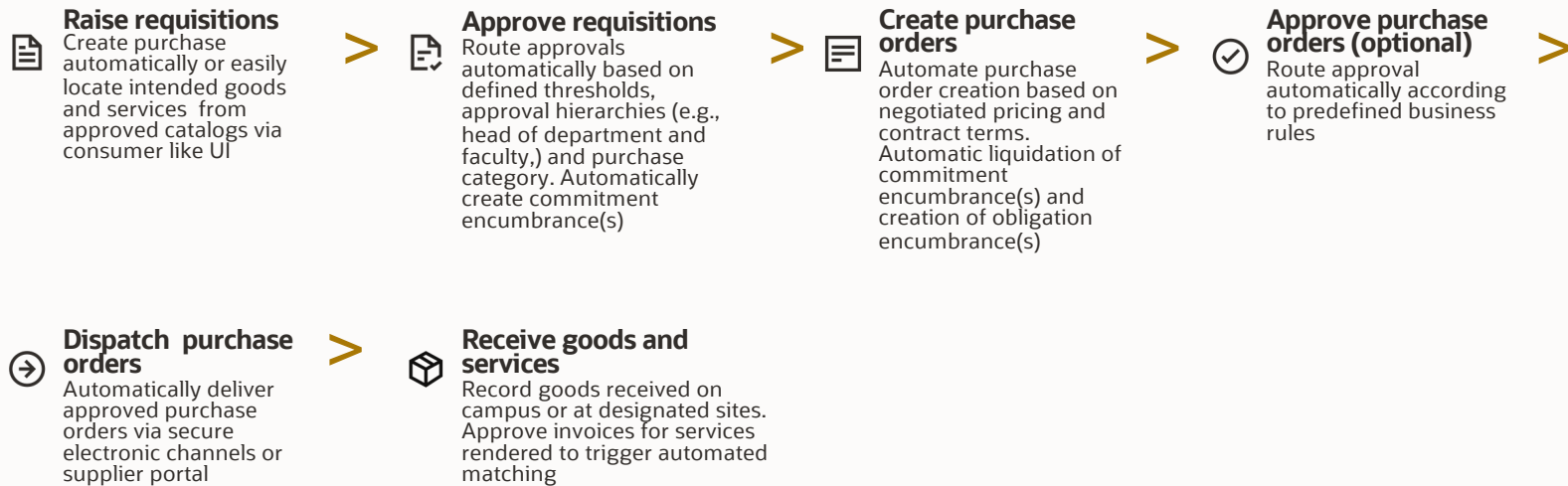
Product Mix: ERP
Popular KPIs: Non-contract purchase rate, price savings amount



Oracle Modern Best Practice

Requisition to Receipt

Higher Education



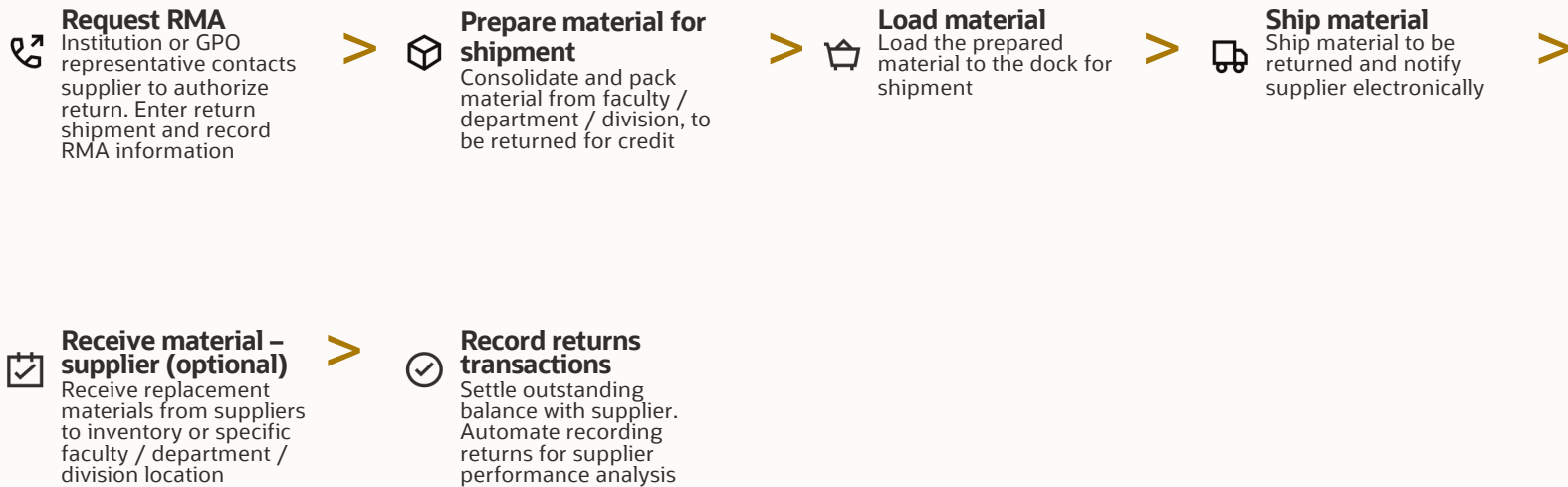
Product Mix: ERP
Popular KPIs: processing cost per purchase order, procurement cycle time



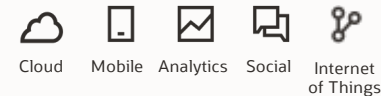
Oracle Modern Best Practice

Supplier Return to Settlement

Higher Education



Product Mix: ERP
Popular KPIs: return amount, no of return transactions



ORACLE



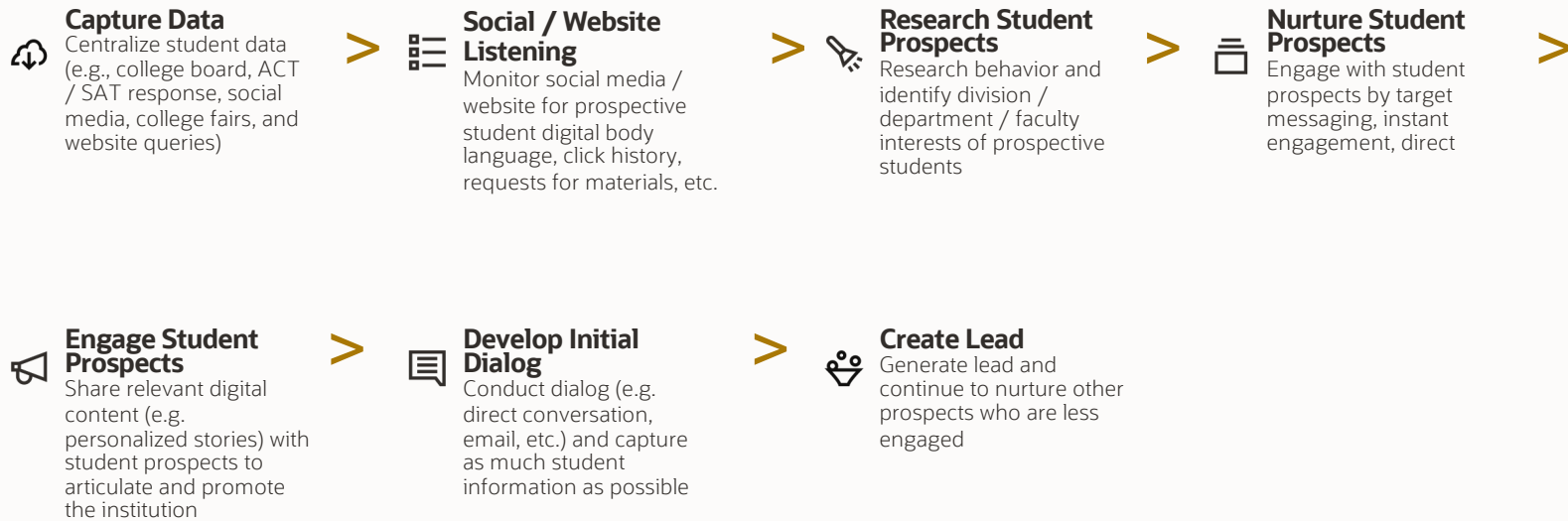
Modern Best Practice for Higher Education - Student Affairs and Admissions



Oracle Modern Best Practice

Digital Student to Lead

Higher Education



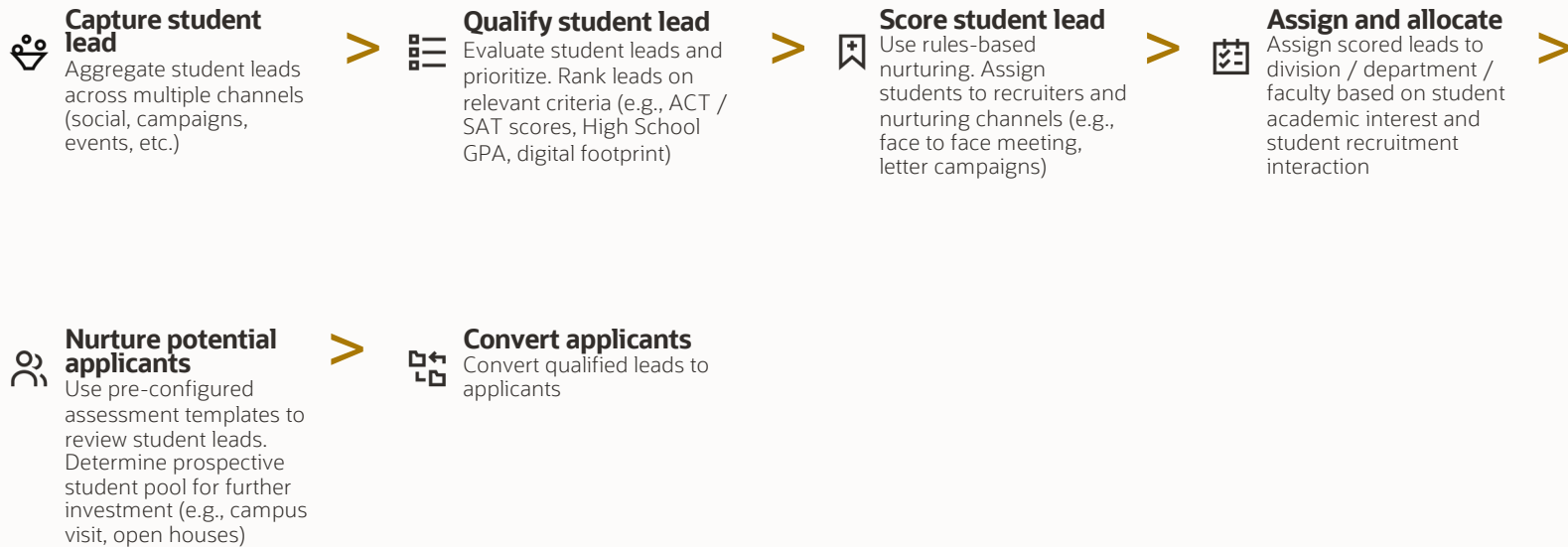
Product Mix: Oracle Student Cloud
Popular KPIs: Lead Rate/Month, Engagement Rate

Cloud Mobile Analytics Social Big Data



Oracle Modern Best Practice

Digital Student Lead to Applicant Higher Education



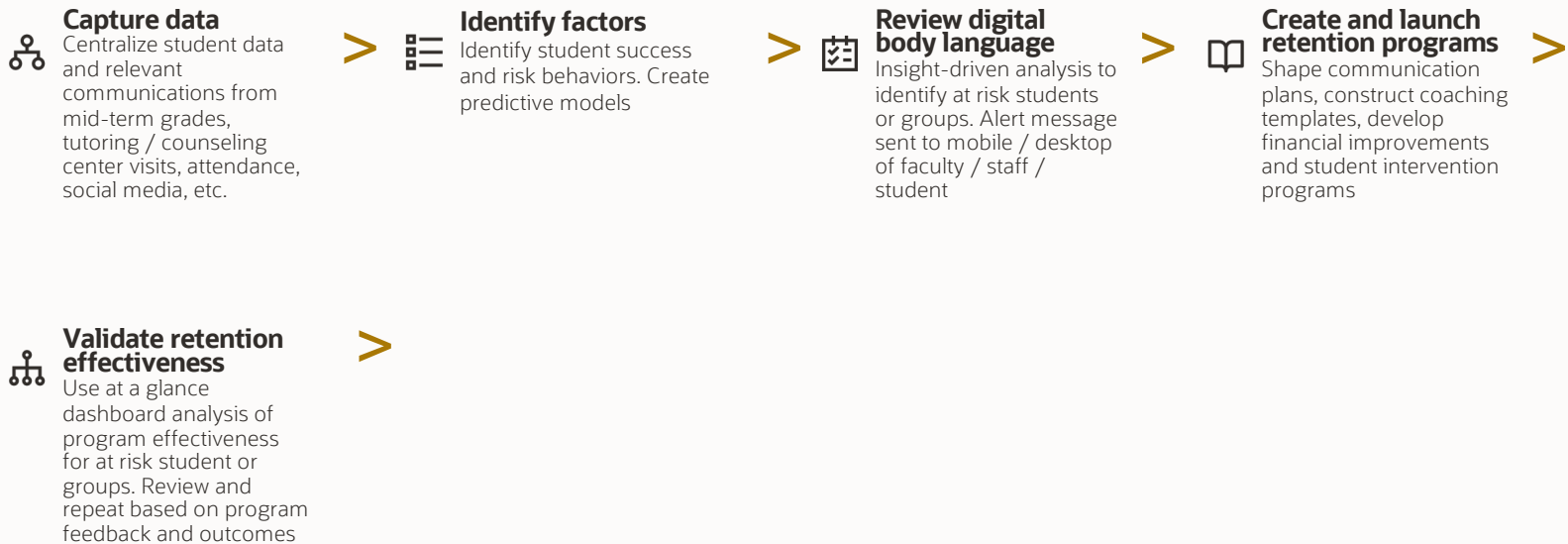
Product Mix: Oracle Student Cloud
Popular KPIs: Applicant Conversion Rate, % of Lead to Applicant

Cloud Mobile Analytics Social Big Data



Oracle Modern Best Practice

Digital Student Relate to Retain Higher Education



Product Mix: Oracle Student Cloud
Popular KPIs: Student Attrition Rate, Graduation Rate

Cloud Mobile Analytics Social Big Data



ORACLE

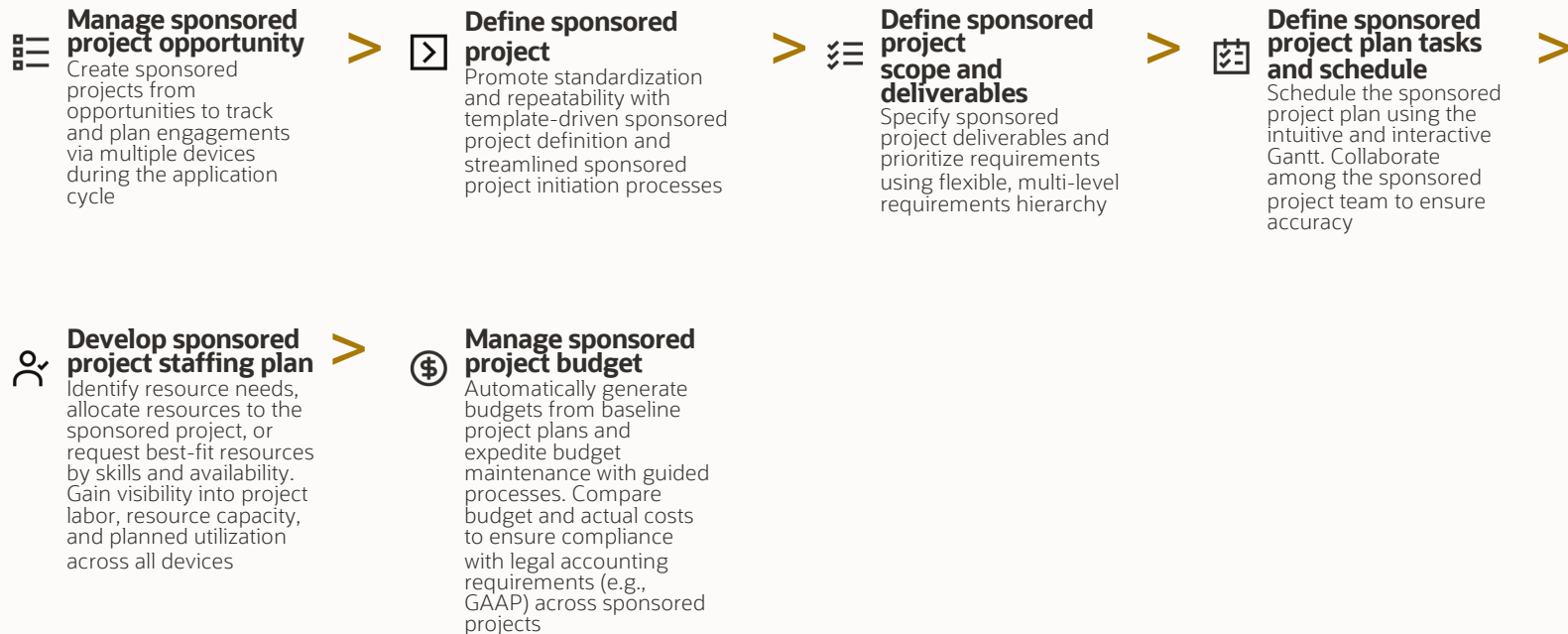


Modern Best Practice for Project Management



Oracle Modern Best Practice

Initiation to Sponsored Project Plan Higher Education



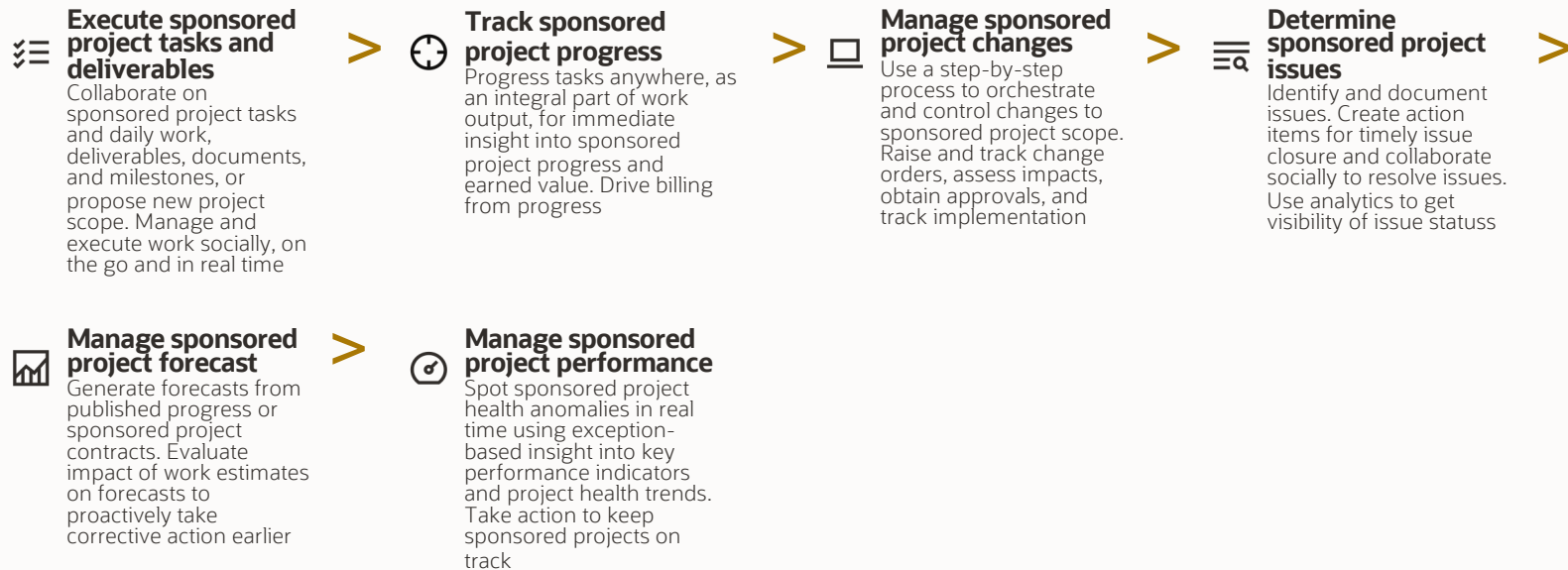
Product Mix: ERP Cloud (Project Management)
Popular KPIs: approval cycle time, project ROI, budget variance, no. of change requests

Cloud Mobile Analytics Social



Oracle Modern Best Practice

Sponsored Project Execution to Control Higher Education



Product Mix: ERP Cloud (Project Management)
Popular KPIs: % milestones completed on time, no. of schedule adjustments



Oracle Modern Best Practice

Sponsored Project Expenditure to Cost Control

Higher Education



Product Mix: ERP Cloud (Project Management, Financials)
Popular KPIs: budget variance, planned value, cost performance index

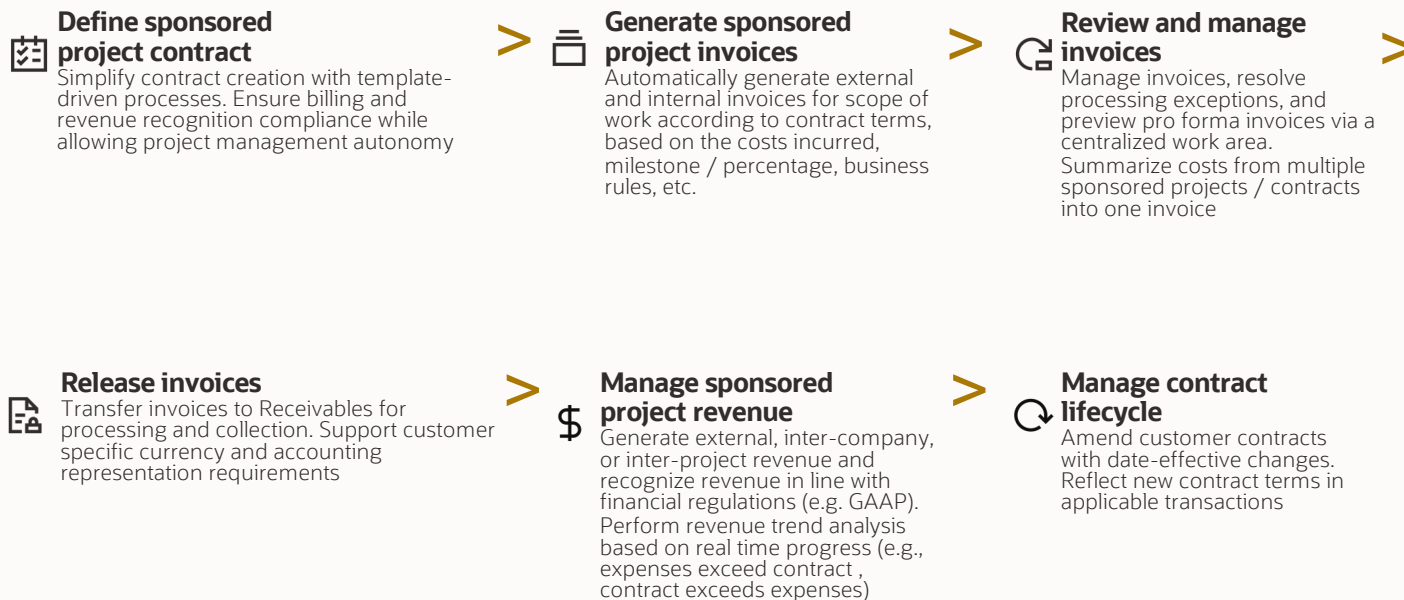
Cloud Mobile Analytics Social



Oracle Modern Best Practice

Sponsored Project Contract to Revenue

Higher Education

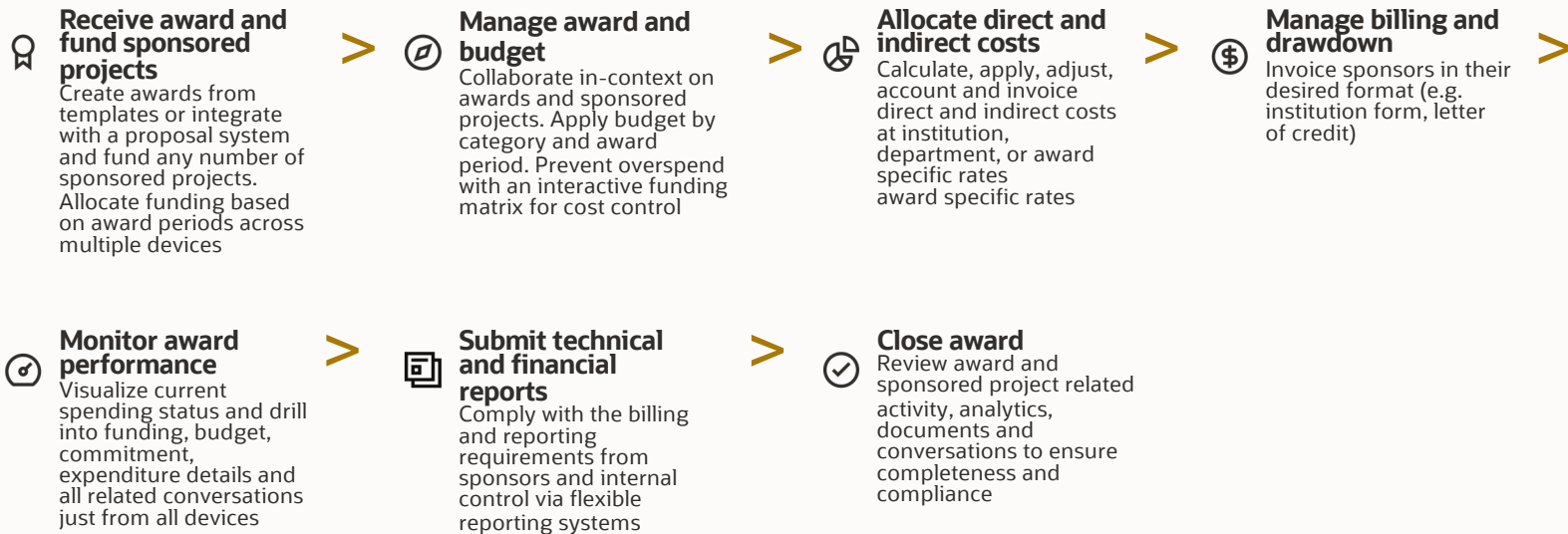


Product Mix: ERP Cloud
Popular KPIs: budget variance, planned value, cost performance index

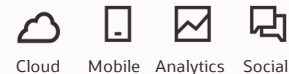
Cloud Mobile Analytics Social



Oracle Modern Best Practice Grant Award Funding to Closeout Higher Education



Product Mix: ERP Cloud
Popular KPIs: award vs. spend, no. of compliance issues



Oracle Modern Best Practice

Analysis to Sponsored Project Optimization Higher Education



Manage Sponsored Project Health

Monitor sponsored project health and performance trends; take corrective action to resolve exceptions and optimize sponsored project financial performance



Analyze sponsored project operations

Perform real-time analysis on all aspects of sponsored project data including cost, revenue, margin, utilization and delivery effectiveness. Facilitate decision-making with analytics in the context of business transactions



Manage enterprise project hierarchy

Organize sponsored projects into an enterprise structure to deliver summarized insight for primary investigators, such as aggregated labor demand. Enable ad hoc queries on business performance at all levels of the sponsored project hierarchy



Optimize sponsored projects

Evaluate current sponsored projects and approve new work; close existing sponsored projects plus related contracts, incorporating best practices into sponsored project templates and documents



Product Mix: ERP Cloud (Project Management), EPM Cloud (Planning)
Popular KPIs: project ROI, budget variance, no. of change requests



Cloud



Mobile



Analytics



Social



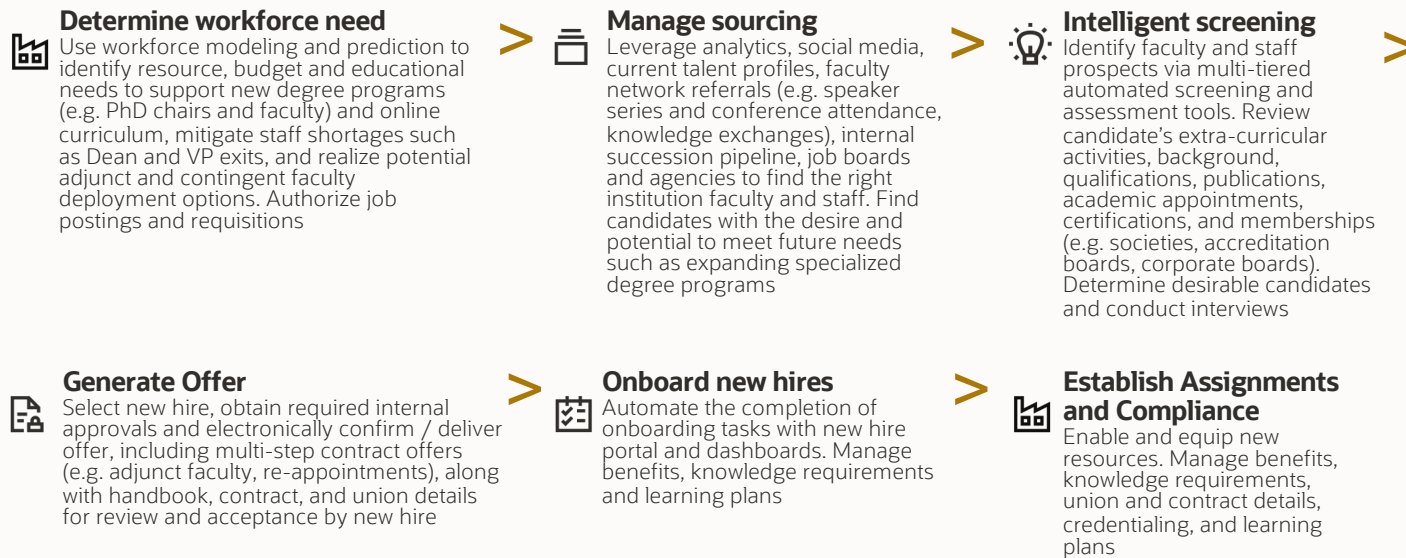
ORACLE



Modern Best Practice for Higher Education- HR and Talent Management



Oracle Modern Best Practice Recruit to Onboard Higher Education

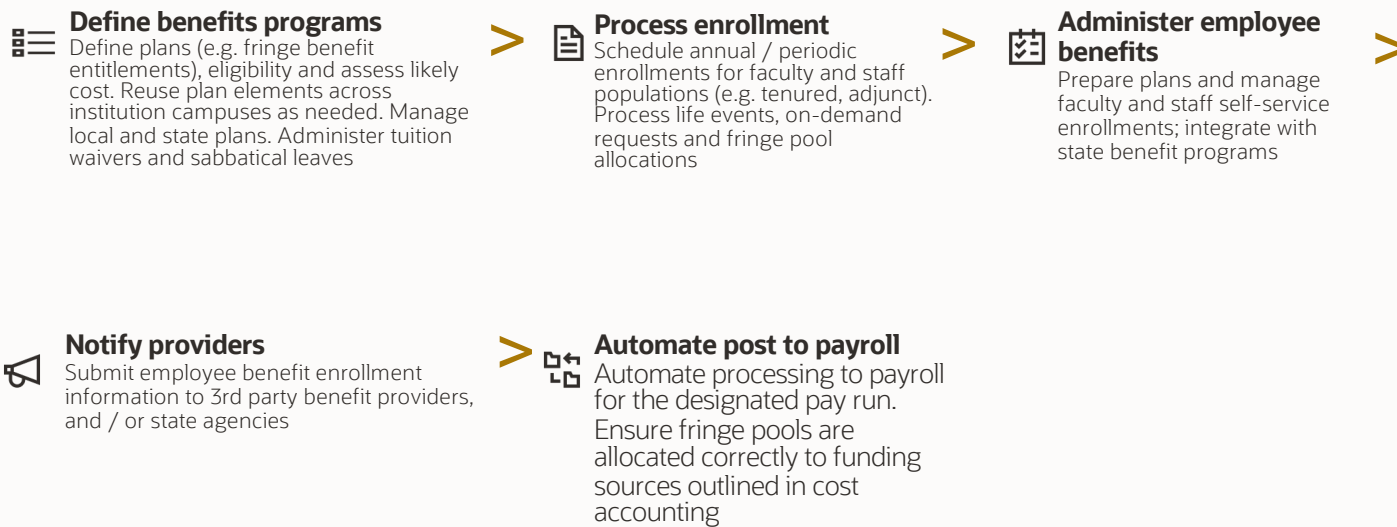


Product Mix: HCM Cloud, EPM Cloud
Popular KPIs: Time to Hire, # of Conversions of Channel X,
Rate of Acceptance, % Employees Trained, Retirement Rate

Cloud Mobile Analytics Social AI/ML Big Data



Oracle Modern Best Practice Benefits to Payroll Higher Education



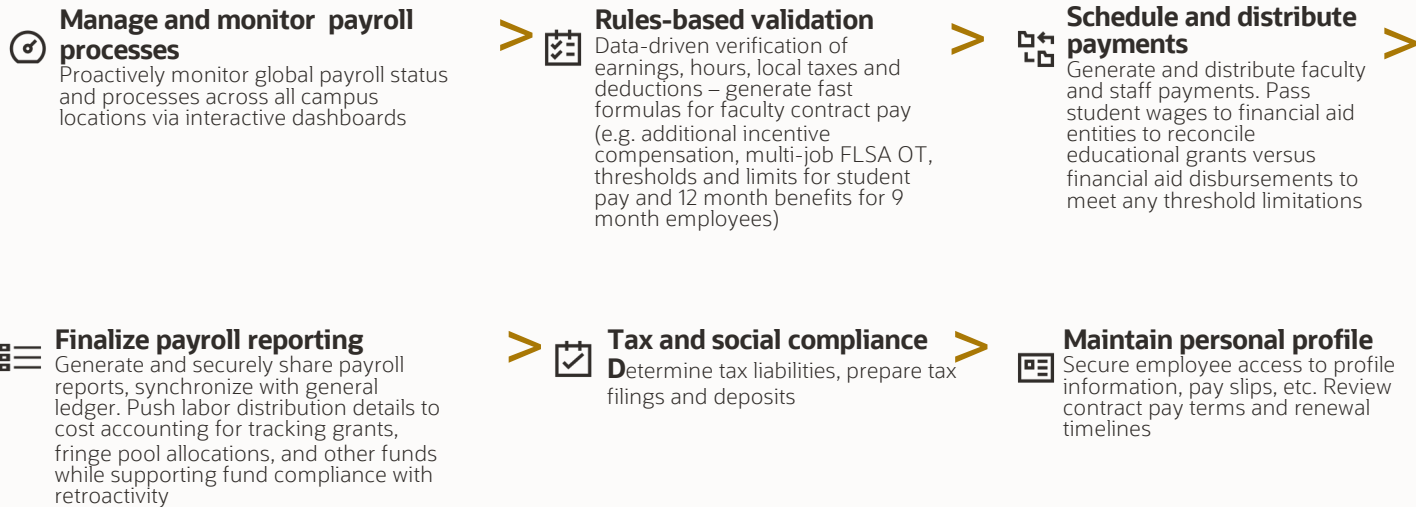
Product Mix: HCM Cloud
Popular KPIs, Salary Competitiveness Ratio, Cost/Employee,
HR-to-FTE Ratio

Cloud Mobile Analytics Social Big Data



Oracle Modern Best Practice

Payroll to Payment Higher Education



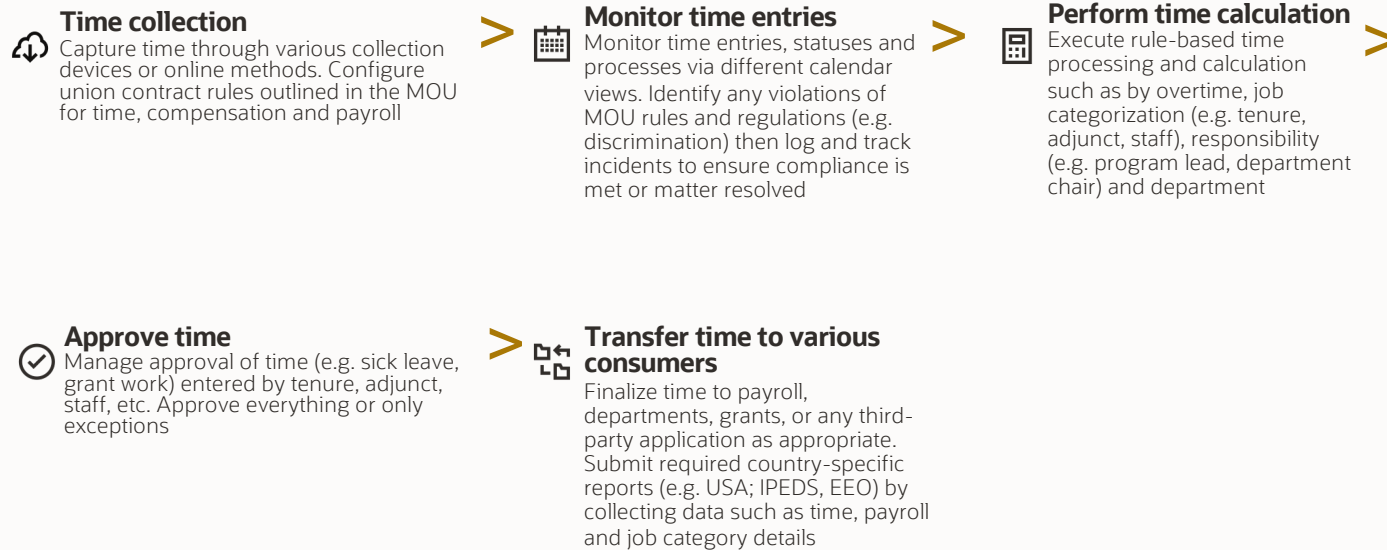
Product Mix: HCM Cloud
Popular KPIs: Cycle Time To Process Payroll, Ratio of Salary Competitiveness, % of Cost of Workforce

Cloud Mobile Analytics Social Big Data



Oracle Modern Best Practice Time Collection to Payroll

Higher Education



Product Mix: HCM Cloud
Popular KPIs: Cycle Time To Resolve Payroll Errors, Rate of Absenteeism, Rate of Approvals, % of Vacation Days Used

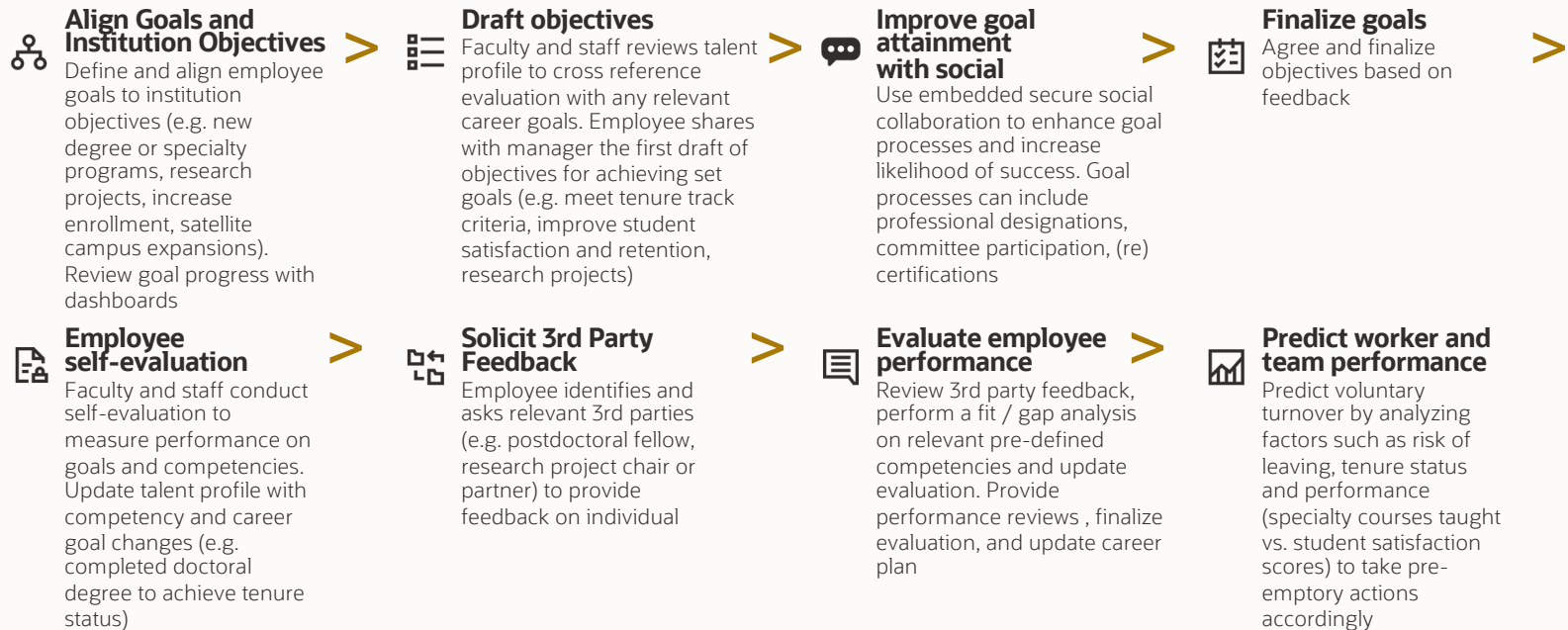
Cloud Mobile Analytics Social Big Data



Oracle Modern Best Practice

Goal Setting to Performance

Higher Education

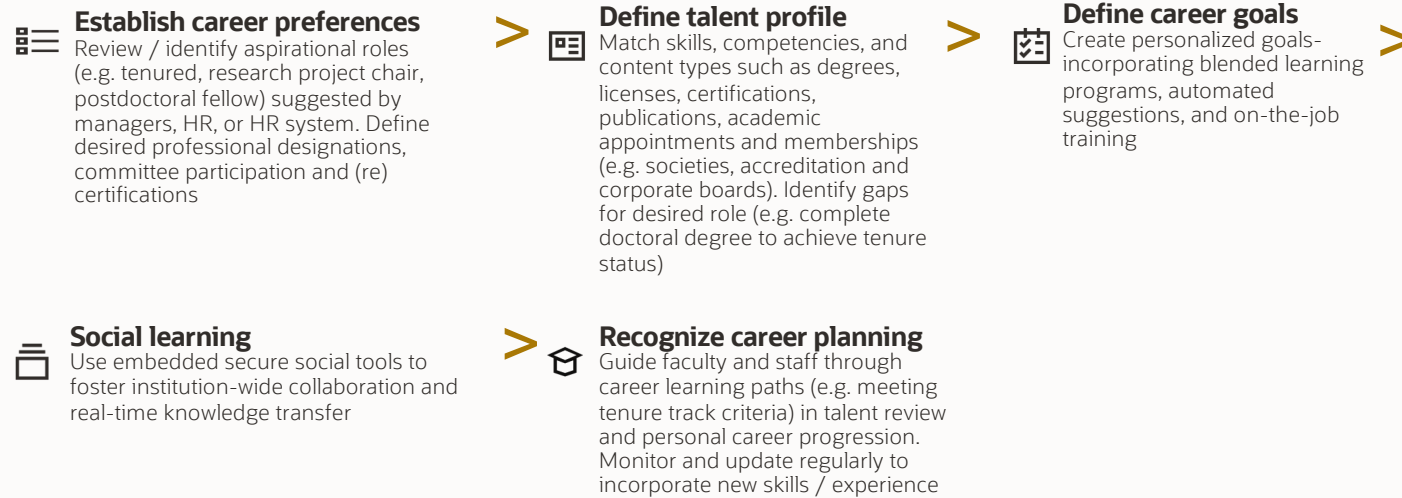


Product Mix: HCM Cloud
Popular KPIs: Rate of Internal Job Hires, % of Workforce Below Performance Standards

Cloud Mobile Analytics Social AI/ML Big Data



Oracle Modern Best Practice Career Planning to Development Higher Education

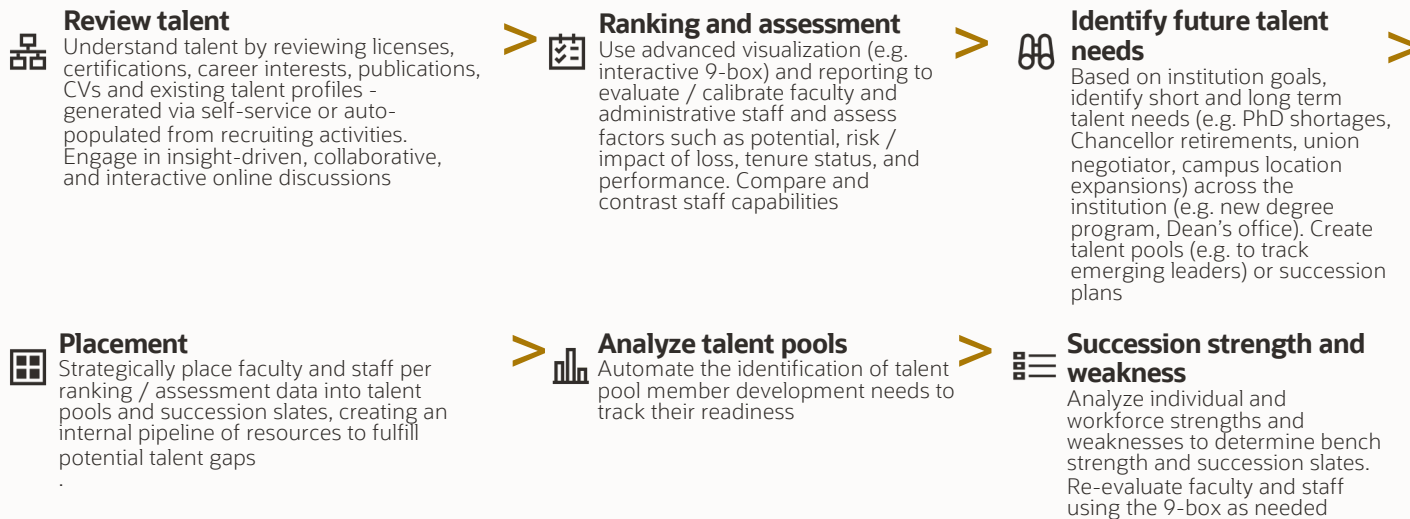


Product Mix: HCM Cloud
Popular KPIs: % Employees Trained, Pre/Post Training %

Cloud Mobile Analytics Social AI/ML Big Data



Oracle Modern Best Practice Talent Review to Succession Higher Education



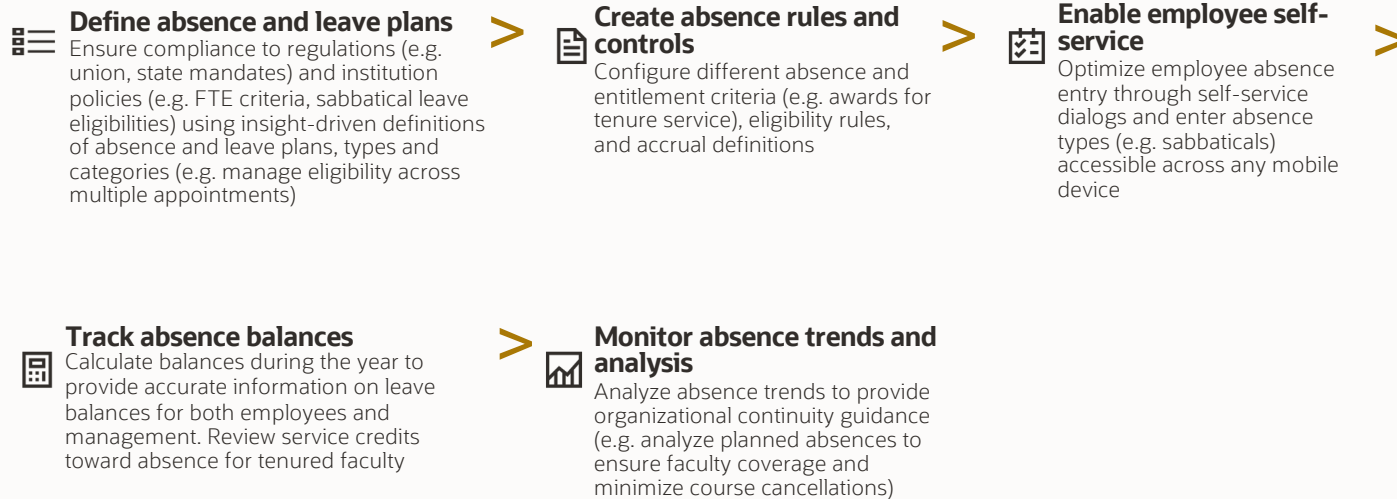
Product Mix: HCM Cloud
Popular KPIs: Internal Promotions vs. External Hires, Average Age of Retirement, Turnover Rate For Highest Performers

Cloud Mobile Analytics Social AI/ML Big Data



Oracle Modern Best Practice Absence Planning to Continuity

Higher Education



Product Mix: HCM Cloud
Popular KPIs: Rate of Absenteeism,



Oracle Modern Best Practice
Employee Insight to Work-Life Alignment
 Higher Education

Obtain Baseline and Set Personal Goals

Leverage key insights to identify and set goals in alignment with personal and career aspirations (e.g. publications, appointments). Determine steps for attainment (e.g. classes, seminars, board of director member volunteer)



Obtain Baseline and Set Personal Goals

Leverage key insights to identify and set goals in alignment with personal and career aspirations (e.g. publications, appointments). Determine steps for attainment (e.g. classes, seminars, board of director member volunteer)



Manage wellness progress

Design, track, measure, and evaluate trends and patterns of wellness activities using dynamic tools, including wearables and smart phone apps, to determine level of goal success



Realize individuality and influence

Use collaboration tools to measure and analyze faculty and staff's character and influence across academic projects / activities. Ensure external media policy compliance to maintain university brand



Identify development opportunities

Gain insight into staff effectiveness and adjust development plans and talent profiles as needed. Discover hidden skills and identify potential staff redeployments to fulfill project gaps



Select Community Outreach Programs

Engage in institution promoted outreach projects (e.g. sponsored mission trips, study abroad programs, etc.) that are of interest and foster targeted career development successes (e.g. reimbursements for additional education)



Participate in social contests

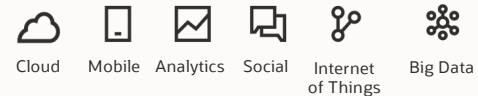
Improve motivation and connect with coworkers by engaging in work-related competitions (e.g. volunteer hours, health goals, community pride), while sharing overall progress of personal goals and outreach work. Cultivate faculty and staff interest in HR self-service (e.g. prompting them to ramp up talent profile)



Receive kudos, rewards, and recognition

Receive acknowledgment of goal attainment and progress that promote work-life alignment

Product Mix: HCM Cloud
 Popular KPIs: Percentage of Vacation Days Used, Employee Satisfaction Index,



Oracle Modern Best Practice

Employee Separation to Workforce Analysis

Higher Education



Product Mix: HCM Cloud
Popular KPIs: Average Tenure, Retirement Rate, Attrition Rate, Diversity Rate, Number of Contractors, Voluntary Termination Rate,

Cloud Mobile Analytics Social Big Data





ORACLE