

# ITESOFT

## ITESOFT.Balance for Oracle E-Business Suite Integration with Oracle E-Business Suite 12.2

Capture invoices and unify the full invoice-handling process with automated invoice integration for Oracle E-Business Suite.



### COMPANY OVERVIEW

ITESOFT is a software company that develops applications to automate business processes. Its solutions uniquely bring together the three elements essential to organizational performance: information capture, process automation, and risk detection. Based on its own AI technologies, ITESOFT solutions make your processes smarter, faster, and more secure.

Parc d'Andron  
Le Séquoia  
30470 Aimargues  
France  
Tel.: +33.(0)4.66.35.77.00  
Fax: +33.(0)4.66.35.77.01  
[itesoft.com](http://itesoft.com)

### INTEGRATION OVERVIEW

ITESOFT.Balance for Oracle E-Business Suite 3.0 is an add-on to Oracle E-Business Suite 12.2 that automatically integrates supplier invoices into Oracle E-Business Suite 12.2. Complementing ITESOFT.Balance, the solution automates all processing steps for invoices with and without purchase orders (POs) including capture, data extraction, validation, invoice clearing, and posting to accounts payable.

ITESOFT.Balance for Oracle E-Business Suite is consists of the following main components:

- Periodic extraction and online synchronization of Oracle Payables master data
- Online controls on Oracle Purchasing, Oracle Payables, general ledger, and eTax data
- Automatic matching of POs and receipts
- Default accounting and validation workflow for invoices without POs
- Invoice data import in Oracle Payables module
- Native access to invoice images
- Online extraction of invoice data
- Integration monitoring and setup

### INTEGRATION DETAILS

ITESOFT.Balance for Oracle E-Business Suite provides a complete set of features for invoice processing in Oracle E-Business Suite:

- Periodic extraction and online synchronization of Oracle Payables master data. Oracle Payables master data is extracted from Oracle E-Business Suite and stored in the ITESOFT.Balance database especially for facilitating supplier identification.
- Online controls on Oracle Purchasing, Oracle Payables, general ledger, and eTax data, including duplicate invoice detection, PO, receipts and prepayment existence, accounting keys, and tax amounts online controls.

**ORACLE**  
Validated Integration  
Oracle E-Business Suite

Oracle Validated Integration provides customers with confidence that a partner's integration with an on-premise Oracle application is functionally sound and performs as designed. This can help customers reduce deployment risk, lower total cost of ownership, and improve the user experience related to the partner's integrated offering.

- Automatic matching with POs and receipts. Invoice creation using automatic PO matching at header or footer level. Support of match approval level (two-, three-, or four-way), and invoice match option via PO or receipt.
- Default accounting and validation workflow for invoices without POs.
- Invoice data import in Oracle Payables module, through Oracle's open interface and online data transfer. Accounting and payment blocking based on standard invoice hold in Oracle E-Business Suite.
- Native access to invoice images from Oracle E-Business Suite's Invoice Workbench feature.
- Online extraction of invoice data. Invoice data is used by ITESOFT.Balance to provide a real-time and end-to-end supervision over the process and detailed reporting. Includes integration, validation, accounting, and payment status.
- Integration monitoring and setup using Oracle E-Business Suite standard and ITESOFT.Balance screens.
- Compatible with Oracle E-Business Suite 12.2 (with Oracle Database 19c) deployed on Oracle Cloud Infrastructure.

## AVAILABILITY

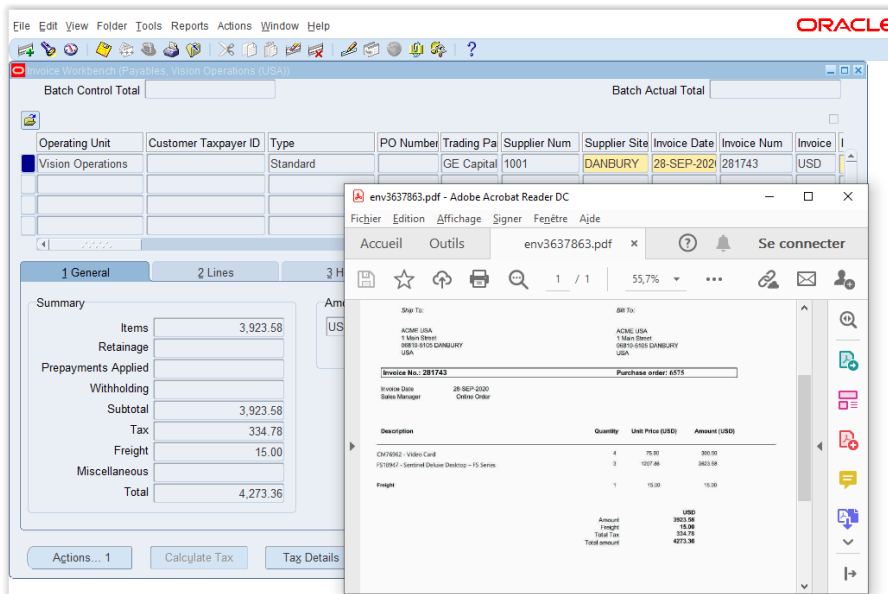
ITESOFT FRANCE  
Immeuble Ariane  
2, rue Jacques Daguerre  
92565 Rueil Malmaison  
France  
Tel.: +33.(0)1.55.91.98.98

ITESOFT UK  
Unit C5 Nib  
Block C, Dukes Court, Dukes Street  
Woking, Surrey GU21 5BH  
United Kingdom  
Tel.: +44.(0)1252.741500

ITESOFT USA  
8951 Cypress Waters Blvd, Suite 170  
Coppell, Texas 75019  
United States  
Tel.: +1.469.857.8226

## SUPPORT

Tel.: +33.(0)4.66.35.77.10  
Email: [support@itesoft.com](mailto:support@itesoft.com)



Attached and captured invoices are accessible from the Invoice Workbench feature of Oracle E-Business Suite.

## TECHNICAL DETAILS

### Partner Environment

- ITESOFT.Balance for Oracle E-Business Suite 3.0

### Oracle Environment

- Oracle E-Business Suite 12.2
- Oracle Purchasing and Oracle Payables modules
- Oracle Database 19c
- Oracle WebLogic Server 11g Release 1

**ORACLE**  
Validated Integration  
Oracle Applications

Copyright © 2021, Oracle and/or its affiliates. All rights reserved. This document is provided for information purposes only, and the contents hereof are subject to change without notice. This document is not warranted to be error-free, nor subject to any other warranties or conditions, whether expressed orally or implied in law, including implied warranties and conditions of merchantability or fitness for a particular purpose. We specifically disclaim any liability with respect to this document, and no contractual obligations are formed either directly or indirectly by this document. This document may not be reproduced or transmitted in any form or by any means, electronic or mechanical, for any purpose, without our prior written permission.

Oracle and Java are registered trademarks of Oracle and/or its affiliates. Other names may be trademarks of their respective owners. 0221

