

## ORACLE VALIDATED INTEGRATION DATASHEET

# KS2 Technologies, Inc.

## HomeSalesOne Integration with JD Edwards EnterpriseOne 9.2

HomeSalesOne—KS2's cloud-based options and sales contract management solution—offers homebuilders automated home configuration, option selections, and the ability to use electronic signatures via DocuSign. The solution also offers integration with Oracle's JD Edwards EnterpriseOne Homebuilder Management.

### COMPANY OVERVIEW

KS2 Technologies, Inc. has been an Oracle partner since 2007, helping dozens of customers using JD Edwards software with new installations, upgrades, enhancements, integrations, and managed services. The company specializes in JD Edwards EnterpriseOne and JD Edwards World applications for customers in many industry sectors, including homebuilding, transportation, oil and gas, manufacturing, distribution, construction, land development, real estate, and more. KS2 is well known in the homebuilding sector for its innovative solutions, including implementation accelerators for JD Edwards software, integrations with leading scheduling tools, development of mobile and cloud apps for the sales office, and many others. The company's B.E.S.T. project methodology—for budget, expectations, sign-off, and timeline—minimizes risk and helps ensure success by providing transparency throughout the implementation process.

### INTEGRATION OVERVIEW

HomeSalesOne is a next-generation home-sales solution that integrates with JD Edwards EnterpriseOne Homebuilder Management. Sales and design center agents are able to configure homes with real-time information from the application, selecting lots, plans, and structural and decorative options according to the pricing, availability, and business rules defined by the organization. Once all selections are made, contracts and addendums can be fully integrated with popular electronic-signature tools.

### INTEGRATION DETAILS

Key features of the solution include:

- Cloud-based and mobile-ready user interfaces for user experiences that allow users to access HomeSalesOne on-site and in the office
- A user-configurable rules-based engine for managing option inclusion and exclusion rules
- Integration with JD Edwards EnterpriseOne Homebuilder Management
- Sales contract configuration and contracting that integrates with JD Edwards software in near-real time
- Integration with DocuSign, allowing for secure documentation through e-signatures
- API-driven integration with other cloud and on-premises apps



Envision. Execute. Soar.

1020 Mustang Drive  
Grapevine, TX 76051  
Tel.: +1.817.310.1800  
Fax: +1.817.310.1801  
[ks2inc.com](http://ks2inc.com)



**ORACLE**  
Validated Integration  
JD Edwards EnterpriseOne

Oracle Validated Integration provides customers with confidence that a partner's integration with an on-premises Oracle application is functionally sound and performs as designed. This can help customers reduce deployment risk, lower total cost of ownership, and improve the user experience related to the partner's integrated offering.

Key benefits of the solution include the ability to:

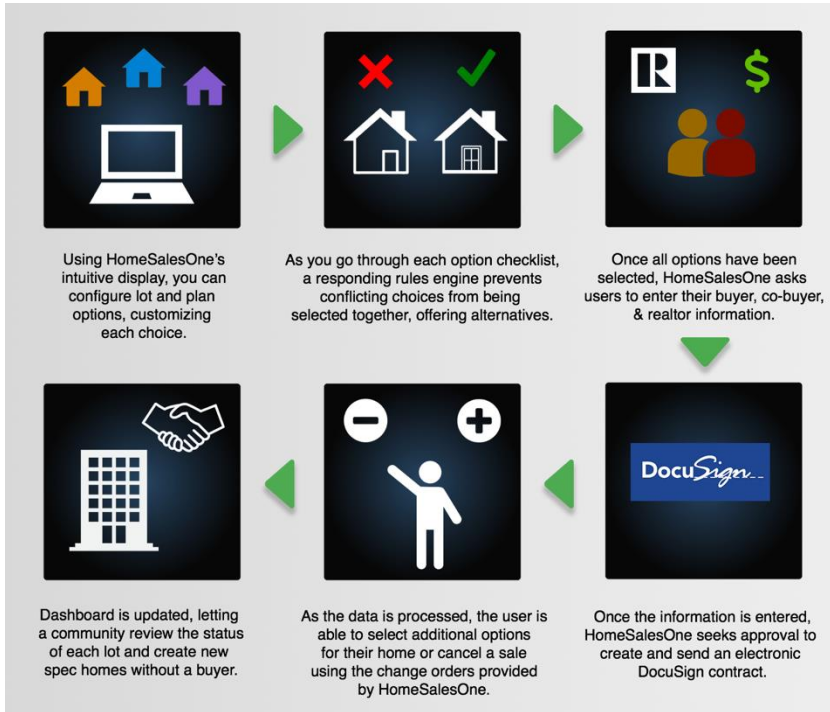
- Improve the home-buyer experience
- Automate sales workflows
- Reduce sales contract errors
- Reduce option configuration errors
- Integrate e-signatures into sales contracts
- Be mobile ready through a tablet or kiosk

**AVAILABILITY**

KS2 Technologies, Inc.  
 1020 Mustang Drive  
 Grapevine, TX 76051  
 Tel.: +1.817.310.1800  
[ks2inc.com](http://ks2inc.com)

**SUPPORT**

Tel: 1.817.310.1800  
[ks2inc.com](http://ks2inc.com)



Overview of HomeSalesOne's functionality

TECHNICAL DETAILS	
Partner Environment	Oracle Environment
<ul style="list-style-type: none"> <li>• HomeSalesOne 2.0</li> </ul>	<ul style="list-style-type: none"> <li>• Oracle's JD Edwards EnterpriseOne 9.2 (64 bit) Homebuilder Management module</li> <li>• Oracle Database 12c</li> <li>• Oracle WebLogic Server 12c</li> </ul>

**ORACLE**  
 Validated Integration  
 Oracle Applications

Copyright © 2022, Oracle and/or its affiliates. All rights reserved. This document is provided for information purposes only, and the contents hereof are subject to change without notice. This document is not warranted to be error-free, nor subject to any other warranties or conditions, whether expressed orally or implied in law, including implied warranties and conditions of merchantability or fitness for a particular purpose. We specifically disclaim any liability with respect to this document, and no contractual obligations are formed either directly or indirectly by this document. This document may not be reproduced or transmitted in any form or by any means, electronic or mechanical, for any purpose, without our prior written permission.

Oracle and Java are registered trademarks of Oracle and/or its affiliates. Other names may be trademarks of their respective owners. 1221

