

# Magic Software Enterprises

## Magic xpi Integration Platform Integration with JD Edwards EnterpriseOne 9.2

Magic xpi Integration Platform orchestrates business information across multiple applications, platforms, and websites—delivering information without boundaries.

### COMPANY OVERVIEW

Magic Software Enterprises is a global provider of business software solutions. Its business technology gives partners and customers the power to work smarter and future-proof their IT investments. Magic Software offers the Magic xpa Application Platform and Magic xpi Integration Platform to customers in more than 50 countries worldwide through a network of 14 regional offices and 27 international distributors.

Magic Software offers solutions that connect enterprise applications such as enterprise resource planning (ERP), customer relationship management (CRM), human resources management (HRM), and supply chain management (SCM) together with content management, portal, database, message queue, ecommerce, and other solutions. The company is experienced in common business needs such as ERP system integration to CRM, ecommerce/website, HL7, SCM, point of sale (POS), warehouse management applications, and many more. Solutions are offered for both synchronous and asynchronous business process orchestration.

### INTEGRATION OVERVIEW

With the integration between Magic Software's Magic xpi Integration Platform and Oracle's JD Edwards EnterpriseOne, you can enhance and extend business processes across multiple applications using a visual drag, drop, and configure methodology. Features include:

- Visual process definition without any need for line-by-line programming
- Extensive library of technology adapters
- Data mapping and XML handling powered by an in-memory data grid
- Step-by-step testing and debugging of process flows
- Complete monitoring of business process activity with fully customizable dashboard views and logging with attachments

The integration design is accomplished without line-by-line scripting or programming. The results of the visual drag, drop, and configure definition of integration flows are contained in XML format and executed by Magic xpi at runtime. Events trigger integration activity, which executes in a unique instance for each process flow.

### INTEGRATION DETAILS

Magic Software's Magic xpi Integration Platform connects with JD Edwards EnterpriseOne using business functions (BSFN) or the JD Edwards EnterpriseOne Orchestrator. You may



#### OUTPERFORM THE FUTURE™

530 Technology Drive  
Suite 100  
Irvine, CA 92618  
United States  
Tel.: +1.949.250.1718  
Fax: +1.949.250.7404  
[magicsoftware.com](http://magicsoftware.com)

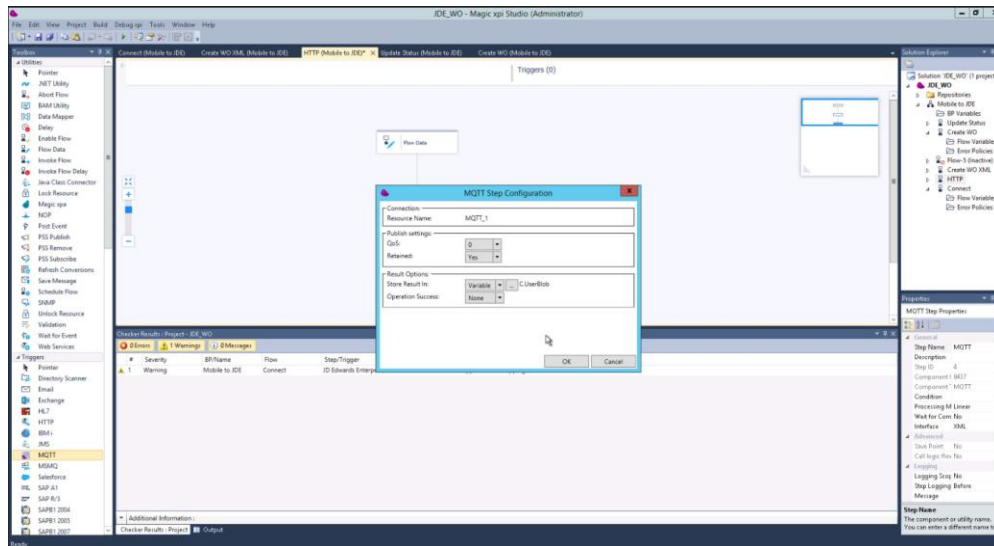
### ORACLE Validated Integration JD Edwards EnterpriseOne

Oracle Validated Integration provides customers with confidence that a partner's integration with an on-premises Oracle application is functionally sound and performs as designed. This can help customers reduce deployment risk, lower total cost of ownership, and improve the user experience related to the partner's integrated offering.

host Magic xpi on Oracle's Sun servers running Oracle Solaris or on other platforms including Windows, Linux, and IBM i.

Using Magic xpi, JD Edwards EnterpriseOne data may be mapped to and from multiple types including XML, flat file, flow variable, operational data store, or user-defined storage.

Business processes can be interfaced between Magic xpi and JD Edwards EnterpriseOne as part of an orchestrated business flow. At runtime, Magic xpi runs in the background and assists the movement of business process information between JD Edwards EnterpriseOne and target applications. The Magic xpi integration monitor logs processes that are executed on the server and allows for data attachment, such as the XML files attached in the validation process.



Screen shot of the integration between Magic xpi Integration Platform and JD Edward's EnterpriseOne

## AVAILABILITY

530 Technology Drive  
Suite 100  
Irvine, CA 92618  
United States  
Tel.: +1.949.250.1718  
Fax: +1.949.250.7404  
Email: [info@magicsoftware.com](mailto:info@magicsoftware.com)

**France**  
Tel.: + 33.1.49.10.58.58

**Germany**  
Tel.: +49.89.962.73.0

**Hungary**  
Tel.: +36.1.216.9910

**India**  
Tel.: +91.20.4102.20.22

**Japan**  
Tel.: +81.3.5937.3300

**The Netherlands**  
Tel.: +31.0.30.85.00.410

**South Africa**  
Tel.: +27.11.258.4442

**United Kingdom**  
Tel.: +44.1344.667.000

**World Headquarters**  
**Israel**

Tel.: +972.3538.9292  
Email:

[webmaster@magicsoftware.com](mailto:webmaster@magicsoftware.com)

## SUPPORT

+1.949.250.1718  
[magicsoftware.force.com/login](https://magicsoftware.force.com/login)

## TECHNICAL DETAILS

Partner Environment	Oracle Environment
<ul style="list-style-type: none"> <li>Magic xpi Integration Platform 4.13.1</li> </ul>	<ul style="list-style-type: none"> <li>Oracle's JD Edwards EnterpriseOne 9.2 (64 bit)</li> <li>Oracle Database 12c</li> <li>Oracle WebLogic Server 12c</li> </ul>

**ORACLE**  
Validated Integration  
Oracle Applications

Copyright © 2021, Oracle and/or its affiliates. All rights reserved. This document is provided for information purposes only, and the contents hereof are subject to change without notice. This document is not warranted to be error-free, nor subject to any other warranties or conditions, whether expressed orally or implied in law, including implied warranties and conditions of merchantability or fitness for a particular purpose. We specifically disclaim any liability with respect to this document, and no contractual obligations are formed either directly or indirectly by this document. This document may not be reproduced or transmitted in any form or by any means, electronic or mechanical, for any purpose, without our prior written permission.

Oracle and Java are registered trademarks of Oracle and/or its affiliates. Other names may be trademarks of their respective owners. 1221

