

SUNSHINE TECHNOLOGY

Automated Reception Machine Validated Integration with Oracle Hospitality OPERA 5.5



Kiosk self-service integrated with your property management system

Sunshine Technology (SONAS) provides a Automated Reception Machine express self-service check in and check out kiosk application integrated with Oracle Hospitality OPERA.

No. 200-18, Zhonghua Rd.
Yongkang District
Tainan City 710, Taiwan (R.O.C)
Tel.: +886.6.512.0329
Fax: +886.6.312.6167
sonas.com.tw

Company Overview

Based on years of experience with Radio Frequency Identification (RFI) and software and hardware integration, SONAS combines smartphone applications and cloud computing techniques. SONAS has developed its core technique, called SONAS Internet of Things (IoT) Middleware, that established four main product lines:

- Accommodation management computerized
- Visitor management digitized
- Building management intellectualization
- Routine work automated

Integration Overview



Oracle Hospitality

Oracle Validated Integration provides customers with confidence that a partner's integration with an Oracle on-premises application is functionally sound and performs as designed. This can help customers reduce deployment risk, lower total cost of ownership, and improve the user experience related to the partner's integrated offering.

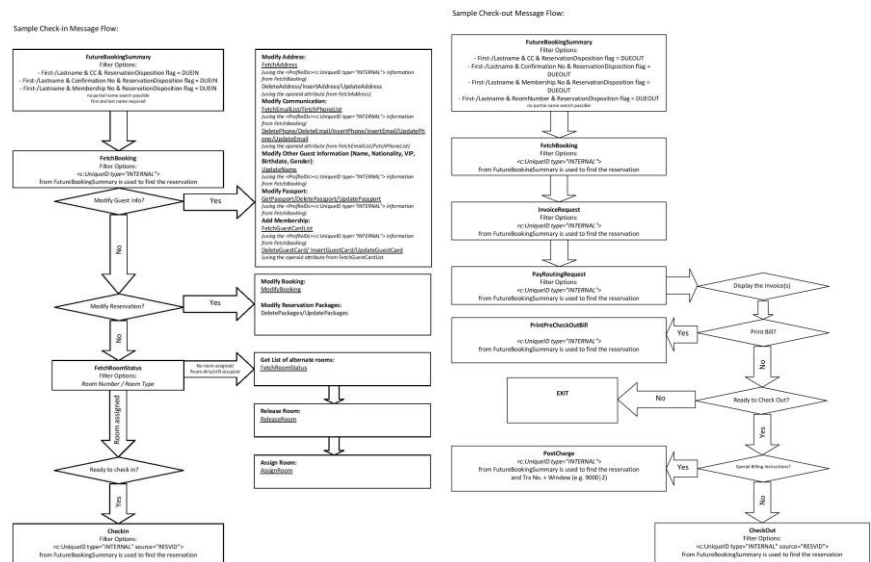


Figure 1. Sample check in and check out message flows

AVAILABILITY

No.200-18, Zhonghua Rd.
 Yongkang Districte
 Tainan City 710, Taiwan (R.O.C.)
 Tel.: +886.6.512.0329
 Fax: +888.6.312.6167
gloffice@stech.tw

SUPPORT

Tel.: +886-6-512-0329
sonas.com.tw

Sample Walk-in Message Flow:

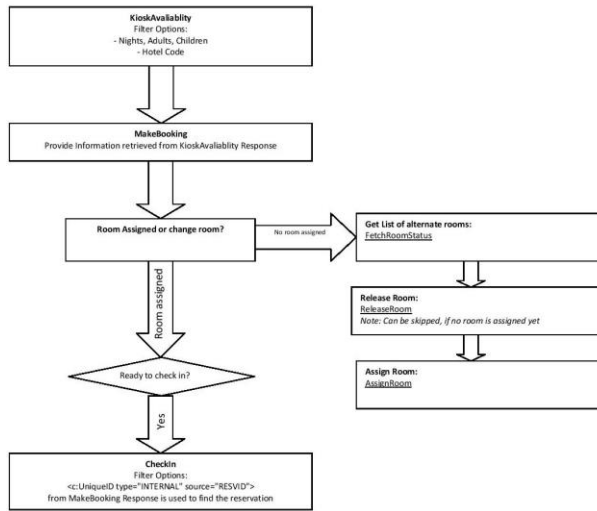


Figure 2. A sample walk-in message flow

Integration Details

Check In

- Fetch booking
- Name look up
- Future booking summary
- Fetch room status
- Assign room
- Check In
- Cancel check in

Check Out

- Fetch booking
- Invoice
- Make payment
- View folio
- Check out

Walk-In Guest Reservation

- Kiosk availability
- Create booking

Technical Details

Environment	
Partner Environment	Oracle Environment
<ul style="list-style-type: none"> • Sunshine Technology Automated Reception Machine 	<ul style="list-style-type: none"> • Oracle Hospitality OPERA 5.5 • OPERA Web Services Interface for Kiosk (Front desk only)
Product ID	
Product ID (FKT)	Description and Name
<ul style="list-style-type: none"> • OPP_KSK 	<ul style="list-style-type: none"> • Oracle Hospitality OPERA Property Kiosk Interface for Sunshine
Supported Protocol	
<ul style="list-style-type: none"> • OWS 5.1 	