



ORACLE

ORACLE

Oracle Enterprise Data Quality

Dashboard Essentials

Product Development

Introduction to the EDQ Dashboard

Zero training monitoring of data quality KPIs

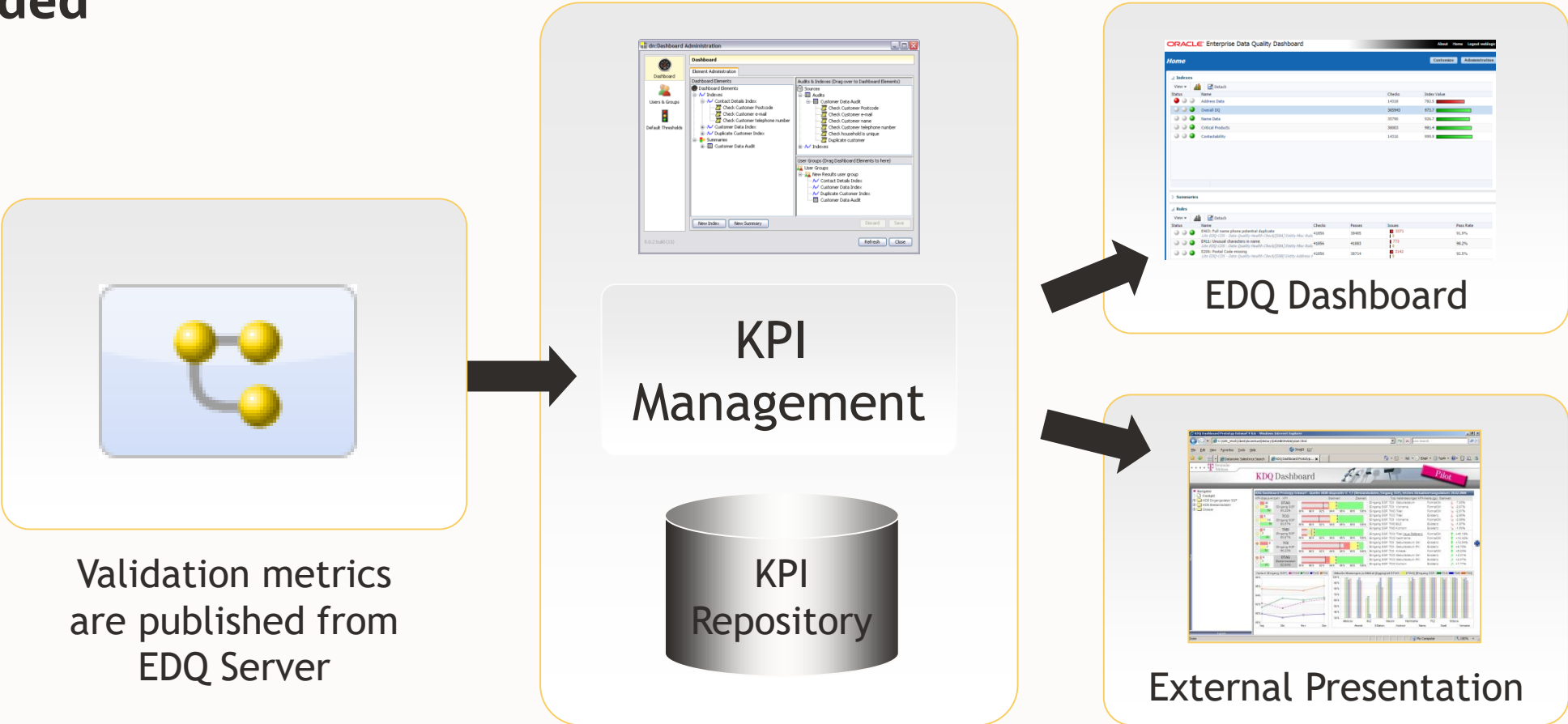
- **The Dashboard in EDQ provides a view of published Data Quality Metrics, tailorable for each user**
- **It is designed to provide a zero training user experience, so that any stakeholder can access Data Key Performance Indicators (KPIs), bringing DQ initiatives out of the back office**
- **Results are presented in a simple traffic light format**
- **Results are trended so that metrics can be monitored over time to verify the return on investment in Data Quality improvement measures**
- **Results can be aggregated in a number of ways**

Publication of results from EDQ

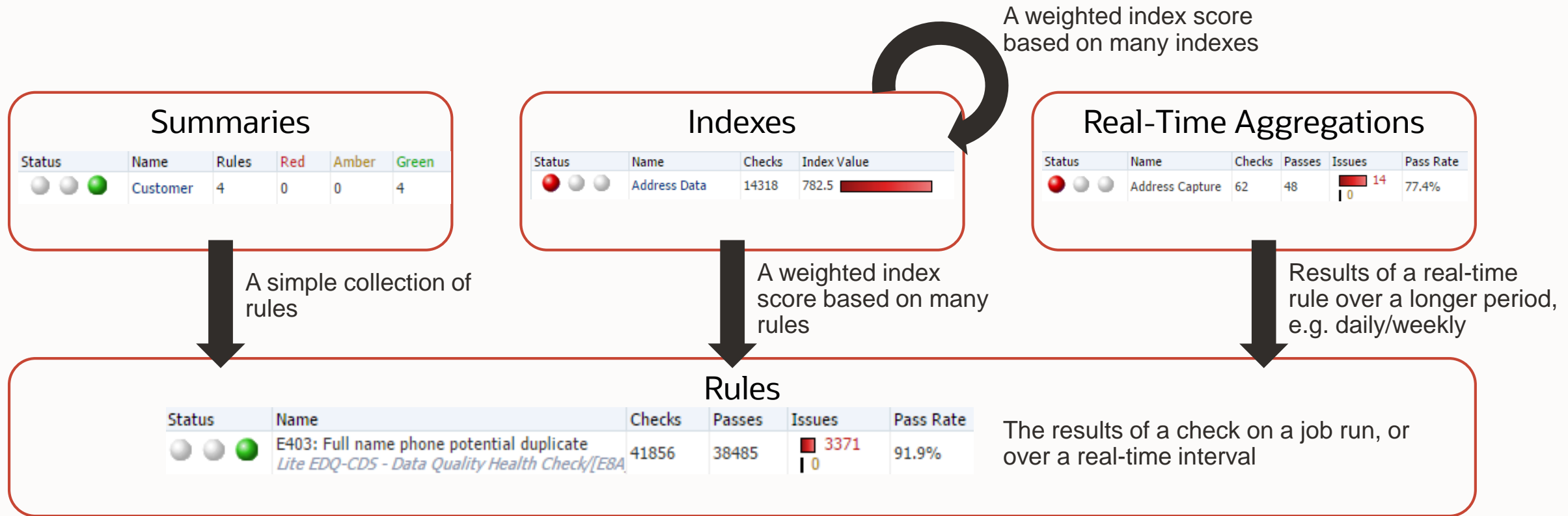
- **EDQ can publish the results of any ‘Check’ processor, and the ‘Parse’ processor, to the Dashboard**
- **These processors all classify data as good or bad (or occasionally indifferent), depending on their configuration**
- **The same results – and the data – can easily be published externally if more advanced reporting is required in a BI tool**

Metric Publication

EDQ can feed results and data to BI for more advanced reporting where needed



Different Types of Result on the Dashboard



Key

↓ Aggregates, and drills down to...



Typical User Roles



- **Data Analysts** (Director users) define which results are published from DQ jobs, and the names of each publishing rule



- **Executives** (Dashboard users) customize the Dashboard to choose which results to monitor



- **Administrators** (Dashboard Administration users) configure how results are aggregated and who can see what

How to publish results to the Dashboard in EDQ (1)



Process configuration

1. Configure a Check or Parse processor to be able to publish its results, using the Dashboard tab
2. Enter a Rule Name for the results as they will appear on the Dashboard, and decide how to classify the check results:

Name Check [List Check]

Attributes Options **Dashboard** Notes Icon & Family

Publish to Dashboard

Rule Name: Name Check

Description: Checks the result of Name analysis and classifies as Pass, Warning, or Fail

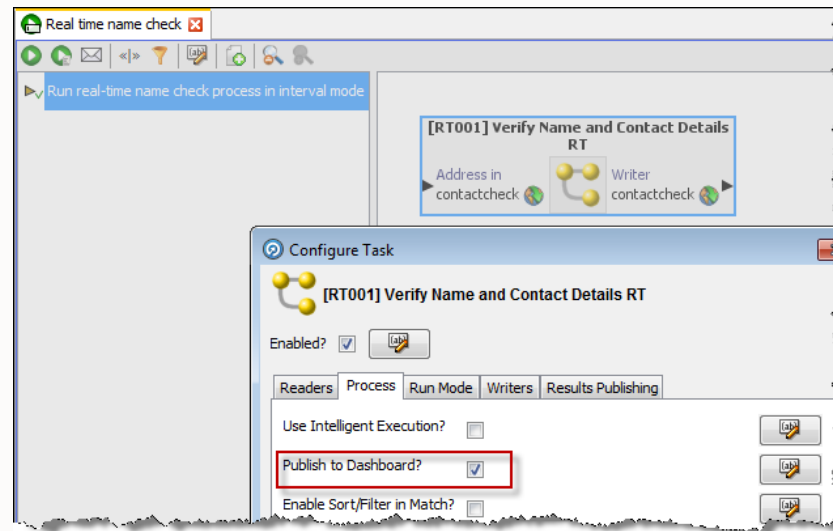
<input checked="" type="checkbox"/> Invalid	Alert
<input checked="" type="checkbox"/> Valid	Pass
<input checked="" type="checkbox"/> Unknown	Warning

How to publish results to the Dashboard in EDQ (2)



Job configuration

3. Configure the process task(s) in a job to enable the Publish to Dashboard option:



Note that the option to Publish to the Dashboard can be externalized and overridden at runtime using a command line option or Run Profile

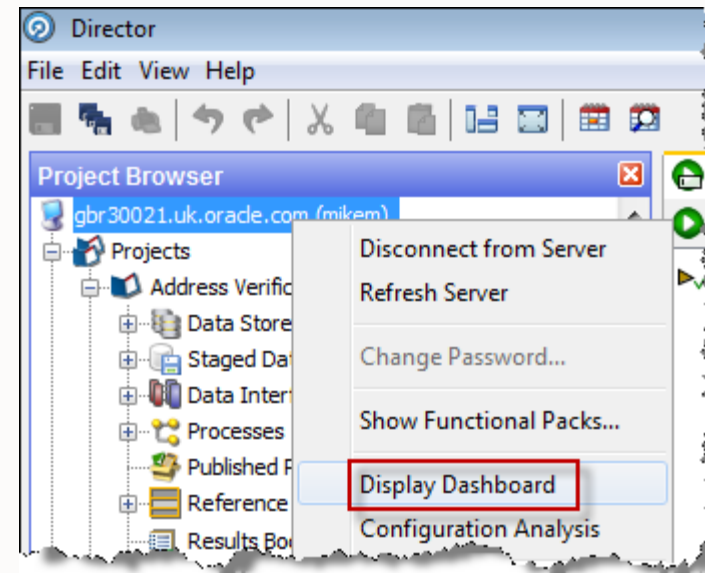
4. Run or schedule the job



Viewing the Dashboard



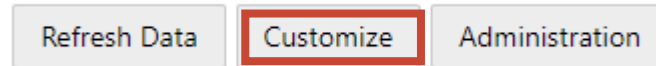
- The EDQ Dashboard can be viewed from a URL (bookmark), from the EDQ Launchpad, or from the context menu of a server in Director



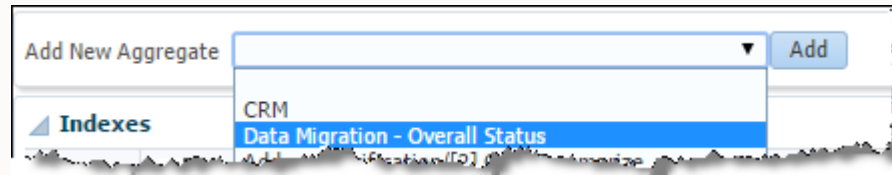
Choosing what to monitor on the Dashboard



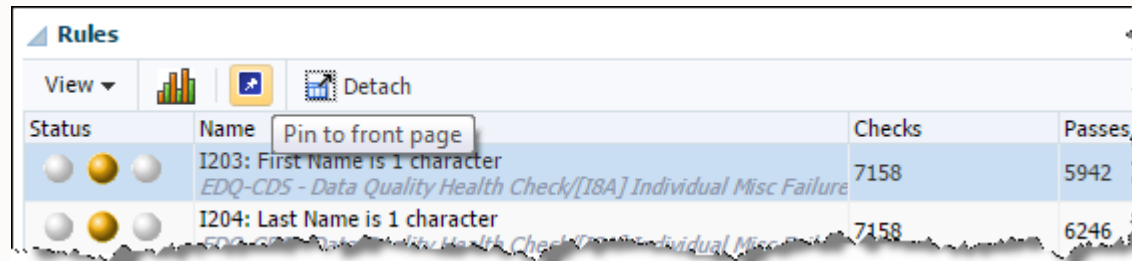
- Users can easily change what they see on their Dashboards by clicking on the **Customize** button:



- It is then possible to add any available **Aggregates (Indexes, Summaries, Real-Time Aggregations)**...



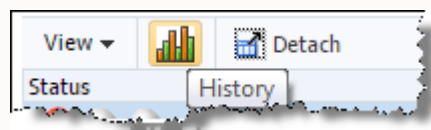
- ...and to monitor rules on the front page (rather than by drilling down from an Aggregate), by selecting and pinning the rule:



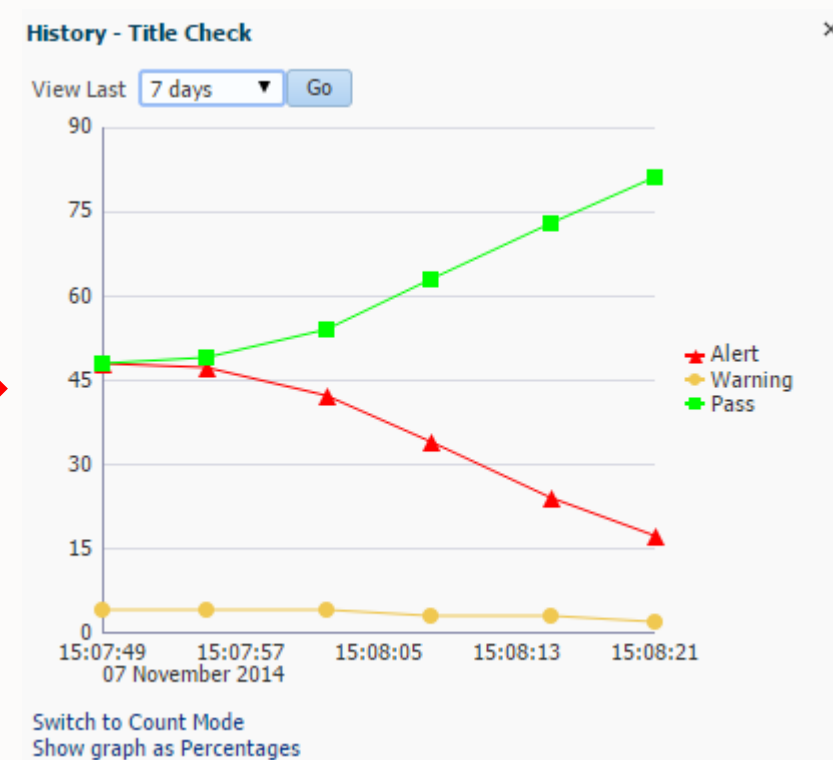
Viewing History



- **Indexes, Real-Time Aggregations and Rules all support History views. Select the element and click on the History icon:**



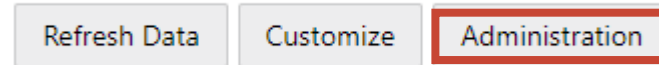
- **Indexes are analogous to stock market indexes; numeric values that go up and down.**
- **Real-Time Aggregations and Rules show the number or % of Passes, Warnings and Fails at each publication point**



Dashboard Administration



- Users with Dashboard Administration permission can configure the Dashboard by clicking on the Administration button:



Default status thresholds (may be overridden on each element)

How to aggregate results

All published results. By default, the publishing process generates a Summary

Define which user groups have access to results and their aggregations



The Customer Data Services DQ Health Check

- **The EDQ Customer Data Services (CDS) Pack provides a menu of out-of-the-box rules for checking the quality of party data (Customer, Contact, Account, Employee, Supplier, Address), which are pre-configured to publish their results to the Dashboard, and/or to external reporting tools**
- **See the Customer Data Services Pack DQ Health Check Guide for more information on the provided rules and publication to Dashboard**

More Information

- For more information on the Dashboard, for example for details on how Index scores are calculated, see the Online Help for Dashboard:

The image shows a screenshot of the Oracle Enterprise Data Quality Help interface. On the left, there is a 'Dashboard' link with a question mark icon and a tooltip that says 'Display help for Dashboard'. A red arrow points from this tooltip to the main help page. The main page is titled 'ORACLE Enterprise Data Quality Help' and features a search bar, a 'View' dropdown, and several utility icons. The left sidebar contains a 'Contents' menu with a tree structure: 'Oracle Enterprise Data Quality Online Help 12c (12.2)' > '1 Oracle Enterprise Data Quality Applications He...' > 'EDQ Applications' > 'Dashboard' (highlighted) > 'Dashboard Elements', 'Dashboard Administration', 'Dashboard Indexes', 'Match Review', 'Case Management', and 'Configuration Analysis'. The main content area is titled 'Dashboard' and contains the following text: 'The Dashboard provides a high-level view of results, in the form of Indexes, Summaries or by Rules. These are collectively known as elements. See the [Dashboard Elements](#) topic for further information.' It also includes a section for 'Dashboard Administration' and a 'Note' stating that content depends on user permissions. At the bottom, there are sections for 'Customizing the View' and 'Adding an Index or Summary to the View'.



Our mission is to help people
see data in new ways, discover
insights, unlock endless possibilities.

