

# ORACLE FUSION MIDDLEWARE

## Oracle B2B 11g Technical Note

### Technical Note: 11g\_001

### Oracle B2B Properties

This technical note lists the B2B properties there function and parameters.

#### Table of Contents

<i>B2B Parameters</i> .....	2
<b>UI Parameters</b> .....	4

## B2B Parameters

Property Name	Default	Use	Description
b2b.hl7.ignoreValidation	<element>	HL7	Do not validate header elements. Ex: <i>"MessageSendingApp, MessageReceivingFacility"</i> <ul style="list-style-type: none"> <li>• Separated by ','.</li> <li>• Set to "ALL" for header</li> </ul>
b2b.useOldFileFormat	true	FTP	%TIMESTAMP% is in milliseconds
b2b.addCorrelatedFAInfoInExceptionXML	False	EDI	Add correlated FA Information to exception
b2b.edi.enablePreprocess	false	EDI	Pre-process data to remove the trailing CRLF
b2b.edi.identifyToTP	false	EDI	True: The toTP is identified in the incoming message
b2b.edi.ignoreValidation	<element>	EDI	Envelope validation: Ignore elements Ex: <i>"interchangeSenderID,InterchangeReceiverID"</i> <ul style="list-style-type: none"> <li>• Separated by ','.</li> <li>• Set to "ALL" for header</li> </ul>
b2b.fa.inbound.validation	true	EDI	Inbound FA validation
b2b.fa.outbound.validation	true	EDI	Outbound FA validation
b2b.FACorrelatedByInterchangeld	false	EDI	If the same control # used between the same partners then in/ outbound FAs may not be correlated correctly. <ul style="list-style-type: none"> <li>• True: correlation based on <ul style="list-style-type: none"> <li>○ Control Number +</li> <li>○ Interchange Sender ID +</li> <li>○ Interchange Receiver ID</li> </ul> </li> </ul>
b2b.rowLockingForCorrelation	false	EDI	True: The original EDI message can be accessed sequentially when the correlated FA & ACK are processed concurrently. This avoids racing conditions when original message is updated
b2b.setDynamicNameSpace	true	EDI	10g translator (ECS) used on 11g files
b2b.AttachmentInboundDirectory	null	RN	Attachment Directory

Property Name	Default	Use	Description
b2b.TPAbasedebMSIdValidateAndOverride		ebXML	<ul style="list-style-type: none"> <li>• True: Identifiers in header used &amp; sent to middleware</li> <li>• False: Identifiers in profile &amp; agreement sent to middleware</li> </ul>
b2b.attachments.dir	null	ebMs, AS1 eMail, HTTP, Rosettanet	Attachments Directory
b2b.certificateValidation	true	ebXML	True: Enables certification validation
b2b.ebms.deliverConvId	false	ebXML	“inReplyToMsgId” set to “conversation id” when sent to middleware
b2b.ebms.TreatMsgWithReplyToMsgIDAsReq	false	ebXML	Conversation scenario
b2b.ebms.ValidateManifest	false	ebXML	Validate payload “Ref Id” with “Content Id” Mime Header
b2b.ebMSName	false	ebXML	Removes Name Identifier from header
b2b.useCPAid	false	ebXML	Enables “CPAid” based agreement identification
b2b.auditFileLocation	/tmp/audit.log		Audit File location (purge / resubmit )
b2b.maxNumAuditFile	10		Log rotation
b2b.StrictHL7XSDConformance	true	HL7	XSD generation to match new 2.x XSD
b2b.checkDuplicate	true		False: checks for duplicate message
b2b.defaultThreadCount	1		Thread Count
b2b.defaultThreadSleepTime	1000 ms		Thread Sleep Time
b2b.delayRollbackInterval	1000 ms		To address racing in high volume
b2b.deploy.validation	true		Validation flag
b2b.enableMetrics	true		Enables B2B DMS metrics for EM
b2b.encoding	UTF-8		Encoding format
b2b.errorsCumulativeReported	true		Reports errors cumulative
b2b.ignoreValidation	false		Envelop validation to be done or not
b2b.inboundThreadCount	null		Inbound Thread Count
b2b.inboundThreadSleepTime	null		Inbound Thread Sleep Time
b2b.mdsCache	2000000		MDS Instance Cache
b2b.OutboundDispatchInterval	0 ms		Delay for every cycle of dispatch.

Property Name	Default	Use	Description
b2b.outboundOneErrorAllError	false		True: Batch - One error results in entire batch set to the error state
b2b.outboundThreadCount	null		Outbound Thread Count
b2b.outboundThreadSleepTime	null		Outbound Thread Sleep Time
b2b.payloadObfuscation	false		Enables payload obfuscation
b2b.retryPollInterval	1		Retry Polling Retry
b2b.useRetryScheduler	false		Alt. mechanism for retry
b2b.deliverPingPongToBackend	true		Signed Ping Pong support based on Action, service. Can be initiated from the back end application
b2b.useOverRiddenDC	true		To support multiple channels in CPA

## UI Parameters

Property Name	Default	Use	Description
b2b.AutoSearch	true		B2B UI reports
b2b.AutoStackHandler	false		Stacked messages processed in auto mode
b2b.calloutDirectory	/MyCalloutDir		Location of callout library
b2b.defaultTP	Null		Default Partner if partner identification fail
b2b.HTTPHeaderDelimiter	#		HTTP Header Delimiter
b2b.InBoundDispatcher	0		# of dispatchers (Sequencing)
b2b.inboundFuncAckNotify	false		Send notification to back end system
b2b.inboundReceiptAckNotify	false		Send notification to back end system
b2b.largePayloadDir	/tmp		Location during inbound processing
b2b.largePayloadSize	2000000		Threshold to use file system (In Bytes)
b2b.logPayload	false		If true, B2B logs the payload in a diagnostic log
b2b.OutBoundDispatcher	0		# of dispatchers (Sequencing & Scheduled Downtime)
b2b.payloadDisplaySize	1048576		Payload display size (In Bytes)

Property Name	Default	Use	Description
b2b.reconnectOnError	false		If true: AQ enqueue attempt fails, then it retries
b2b.showPayload	true		Show payload in UI
b2b.StackHandlerInterval	1		Comma separated time interval for the stack handler (Sequencing)
b2b.useExceptionQueue	null		JMS queue for exception messages. Configured as a Host Internal Delivery channel
b2b.useJMSQueue	false		B2B_IN_QUEUE, B2B_OUT_QUEUE
b2b.SMTPHost	null	AS1	Host SMTP Server to send mails. And also to send the negative MDN for AS1
b2b.FAInternalProperties	false	EDI	Generates the internal properties structure in EDI FA XDATA (XML)
b2b.ignoreCorrelation	false		When an ACK is received it is correlated to the business message. If correlation fails, an exception is generated & the ACK process stops.
b2b.partialBatchCommitSize	null	EDI	Partial de-batch Commit Size
b2b.FAHandledByB2B	true	EDI, HL7, OAG	ACK automatically generated / consumed
b2b.genericMessageType	false	HL7	Ignore trigger event in HL7 MSG
b2b.MimeType	null	HTTP	Use to specify additional MIME types. Oracle B2B supports: <ul style="list-style-type: none"> <li>• application/xml</li> <li>• application/octet-stream</li> <li>• application/EDIFACT</li> <li>• application/EDI-X12</li> <li>• application/jpg</li> <li>• application/gzip</li> <li>• application/x-gzip</li> <li>• application/pkcs7-signature</li> <li>• text/xml</li> </ul>
b2b.receivedTimeEpochFormat	false	ebXML	To get the time in Epoch format for JMS header MSG_RECEIVED_TIME, a B2B server property "b2b.receivedTimeEpochFormat" needs to be set to true in the EM console. By Default, MSG_RECEIVED_TIME will be in Java Calendar format

**Refer to:**

Oracle Fusion Middleware User's Guide for Oracle B2B 11g Release 1 P/N E10229-04

[http://download.oracle.com/docs/cd/E14571\\_01/integration.1111/e10229/toc.htm](http://download.oracle.com/docs/cd/E14571_01/integration.1111/e10229/toc.htm)

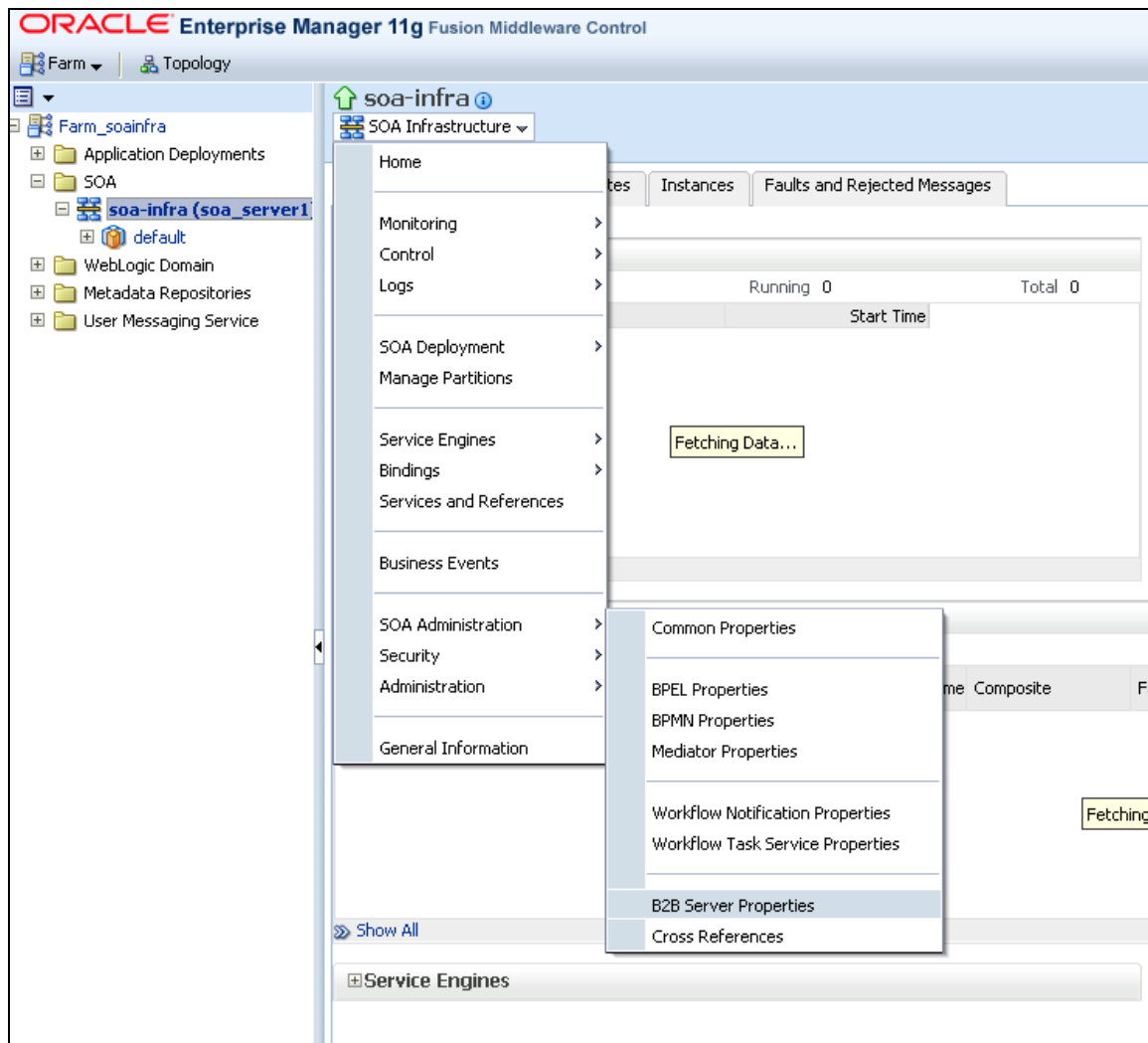
Appendix B: Setting B2B Configuration Properties in Fusion Middleware Control

- B.1 Properties To Set in Fusion Middleware Control
- B.2 Using the configmbeanutil Utility

[http://download.oracle.com/docs/cd/E14571\\_01/integration.1111/e10229/app\\_isags.htm#CIHDFDIC](http://download.oracle.com/docs/cd/E14571_01/integration.1111/e10229/app_isags.htm#CIHDFDIC)

**Example: Setting parameters in Enterprise Manager**

SOA Infrastructure Home > SOA Administration > B2B Server Properties



ORACLE Enterprise Manager 11g Fusion Middleware Control

Setup Help Log Out

Logged in as weblogic | Host adc2190337.us.oracle.com  
Page Refreshed Jul 30, 2010 4:41:30 AM PDT

Farm Topology

soa-infra SOA Infrastructure

System MBean Browser

oracle.as.soainfr...

Application Defined MBeans

- oracle.as.soainfra.config
  - Server: soa\_server1
    - B2BConfig
      - b2b

Operation: addProperty

MBean Name oracle.as.soainfra.config:Location=soa\_server1,name=b2b,type=B2BConfig,Application=soa-infra

Operation Name addProperty

Description Add a property

Return Type void

Invoke Revert Return

Parameters

Name	Description	Type	Value
key	Name of the property	java.lang.String	b2b.OutboundDispatchInterval
value	Value of the property	java.lang.String	1000
comment	Comment about the property	java.lang.String	

