



An Oracle White Paper
November 2010

Oracle Business Intelligence Standard Edition One 11g

Introduction

Oracle Business Intelligence Standard Edition One is a complete, integrated BI system designed for deployments from 5 to 50 users. It includes a database, ETL tool, and the capability to create ad-hoc analyses, dashboards, and highly formatted reports.

The 10g version of BI SE One included a special installer and documentation tailored to the specific components that were available in 10g. For the 11g version of BI products, Oracle does not plan to release a special installer for BI SE One. This document explains how customers purchasing Business Intelligence Standard Edition One can install the 11g version and ensure they stay within the limits of the Business Intelligence Standard Edition One license. It also explains how customers can upgrade from BI SE One 10g to BI SE One 11g.

Mapping Business Intelligence Standard Edition One License Restrictions in 10g and 11g

The Business Intelligence Standard Edition One License entitles the customer to:

Database Standard Edition One (incl. Oracle Warehouse Builder core ETL), Oracle BI Server, Oracle BI Answers, Oracle BI Dashboards, Oracle BI Server Administrator, and Oracle BI Publisher.

These components were distinct installation choices in the 10g product and there was a special installer for Business Intelligence SE One that installed and configured only those components. Oracle has no plans to provide a special installer for Standard Edition One for 11g. Further, the BI user interface framework has been redesigned to move focus away from specific editors and components. The Oracle BI user interface in 11g focuses on types of objects that users create. The following table maps the 10g BI components that are included in the Business Intelligence Standard Edition One license to the 11g BI objects that licensed users are entitled to create.

TABLE 1. BUSINESS INTELLIGENCE STANDARD EDITION ONE COMPONENTS AND OBJECT MAPPING

10G	11G
Oracle Standard Edition One Database (includes Oracle Warehouse Builder Core ETL)	Same – no change
Oracle BI Server Administrator	Same – no change
Oracle BI Server	Same – no change
Oracle BI Answers	Analysis and Interactive Reporting: Analysis, Filter, Condition
Oracle BI Dashboards	Analysis and Interactive Reporting: Dashboard, Dashboard Prompt
Oracle BI Publisher	Published Reporting: Report, Report Job, Data Model, Style Template, Sub Template

When looked at through the Oracle BI 11g user interface there are several places where a user can create new objects. From the Home Page:

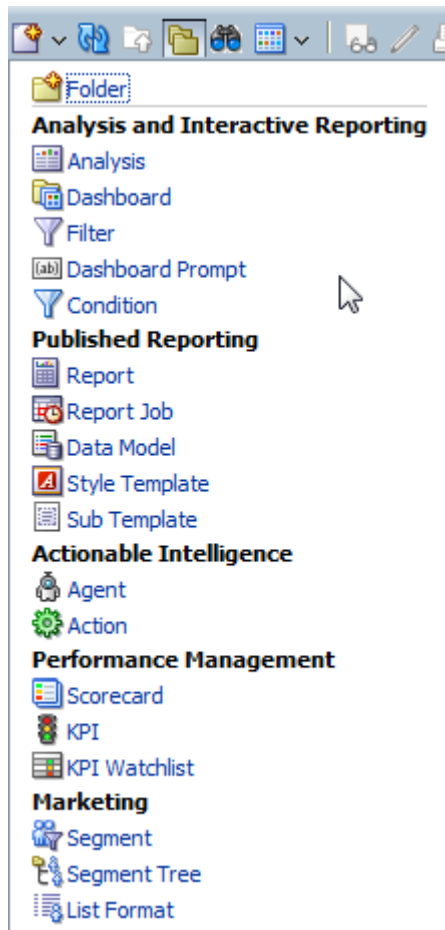


Home Page Create... Menu

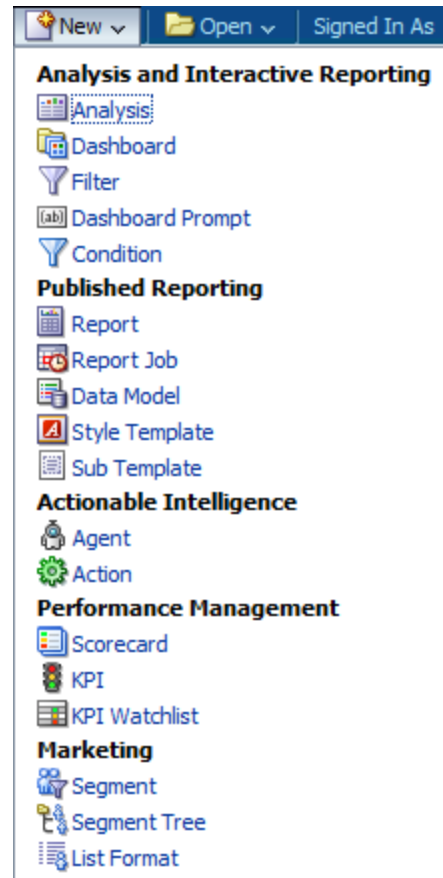
A user licensed for Business Intelligence SE One may create any of the objects under “Analysis and Interactive Reporting” and “Published Reporting” and Navigate Actions under Actionable Intelligence.

Likewise, from the catalog New menu and the universal New menu:

Catalog New Menu



Universal New Menu



A user licensed for Business Intelligence SE One may create any of the objects under “Analysis and Interactive Reporting” and “Published Reporting” and Navigate Actions under Actionable Intelligence.

One way to ensure that your organization meets the functional limits of the Business Intelligence Standard Edition One license is to deny permission to those privileges that are not permitted under the terms of the license. When logged in as a user with administrator privileges follow the Administration link from the upper right corner.



BI Universal Menu

On the Administration page, under the Security section, click on “Manage Privileges”.

Security

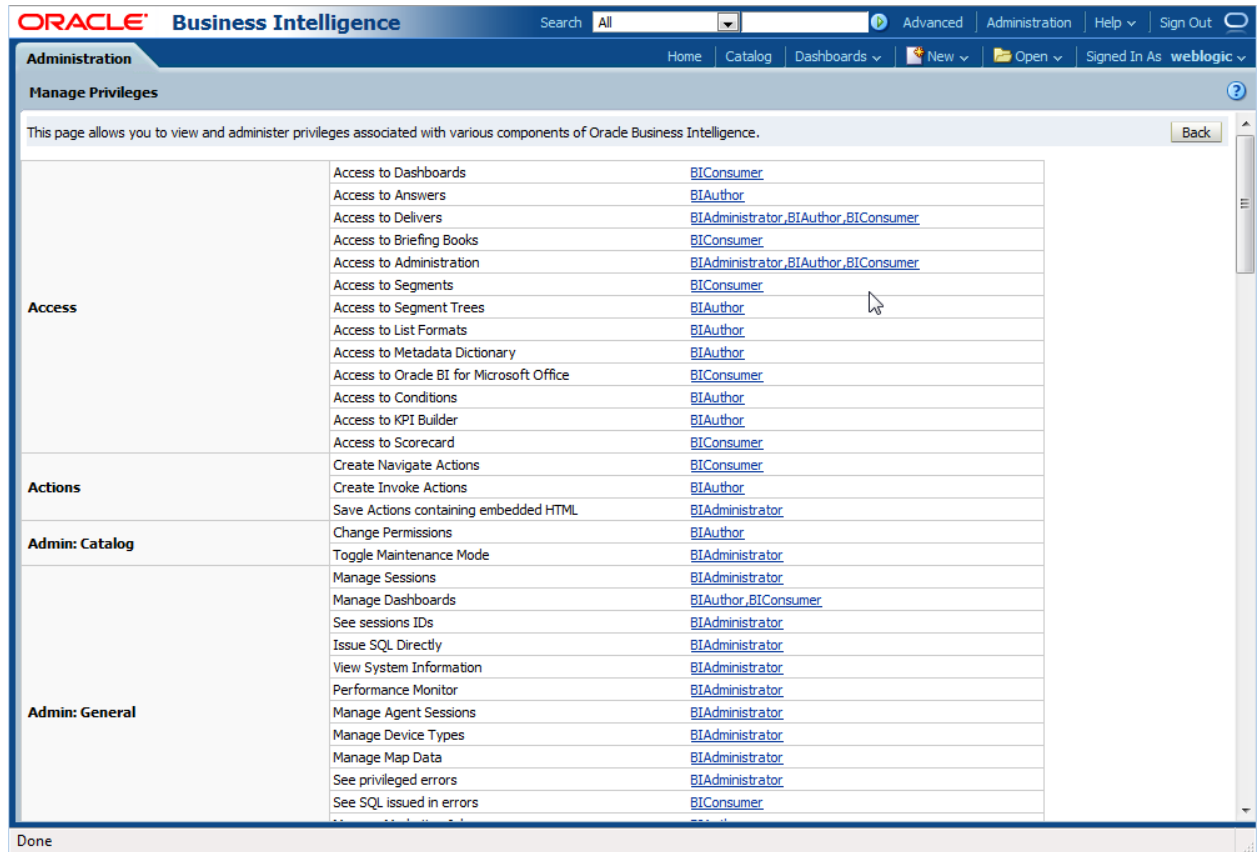
Manage Catalog Groups

Create, edit and delete Catalog Groups.

Manage Privileges

Manage privileges and rights given to users and groups.

You will see a list of privileges and the groups that have been granted those privileges.



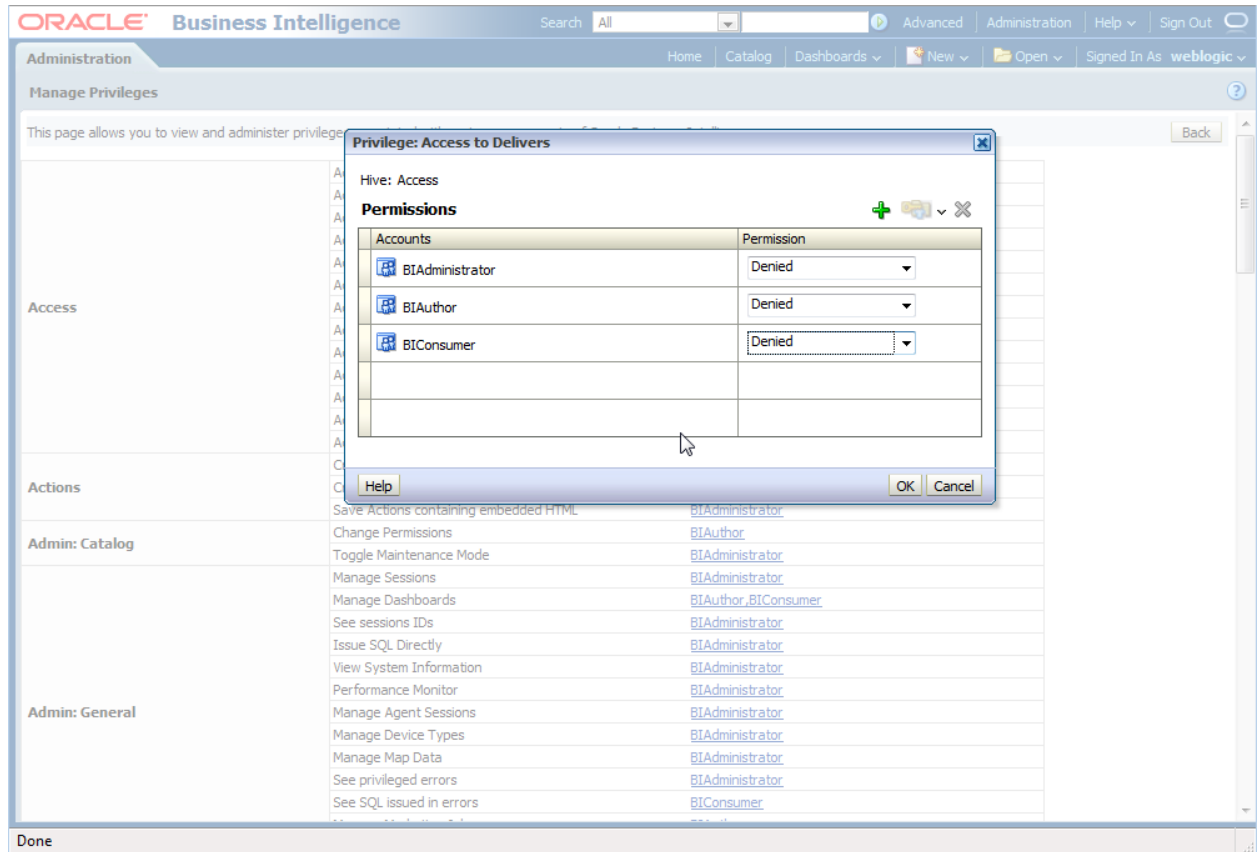
Manage Privileges

Under the Access and Actions section, click on the Groups for each privilege and set the permission to “Denied” for the appropriate privileges.

Privileges to Deny to all Groups and Users:

SECTION	PRIVILEGE
Access	Access to Delivers
	Access to Segments
	Access to Segment Trees
	Access to List Formats
	Access to Oracle BI for Microsoft Office
	Access to KPI Builder
	Access to Scorecard
Actions	Create Invoke Actions
	Save Actions containing embedded HTML

Here is an example for denying Access to Delivers.



Denying access to Delivers

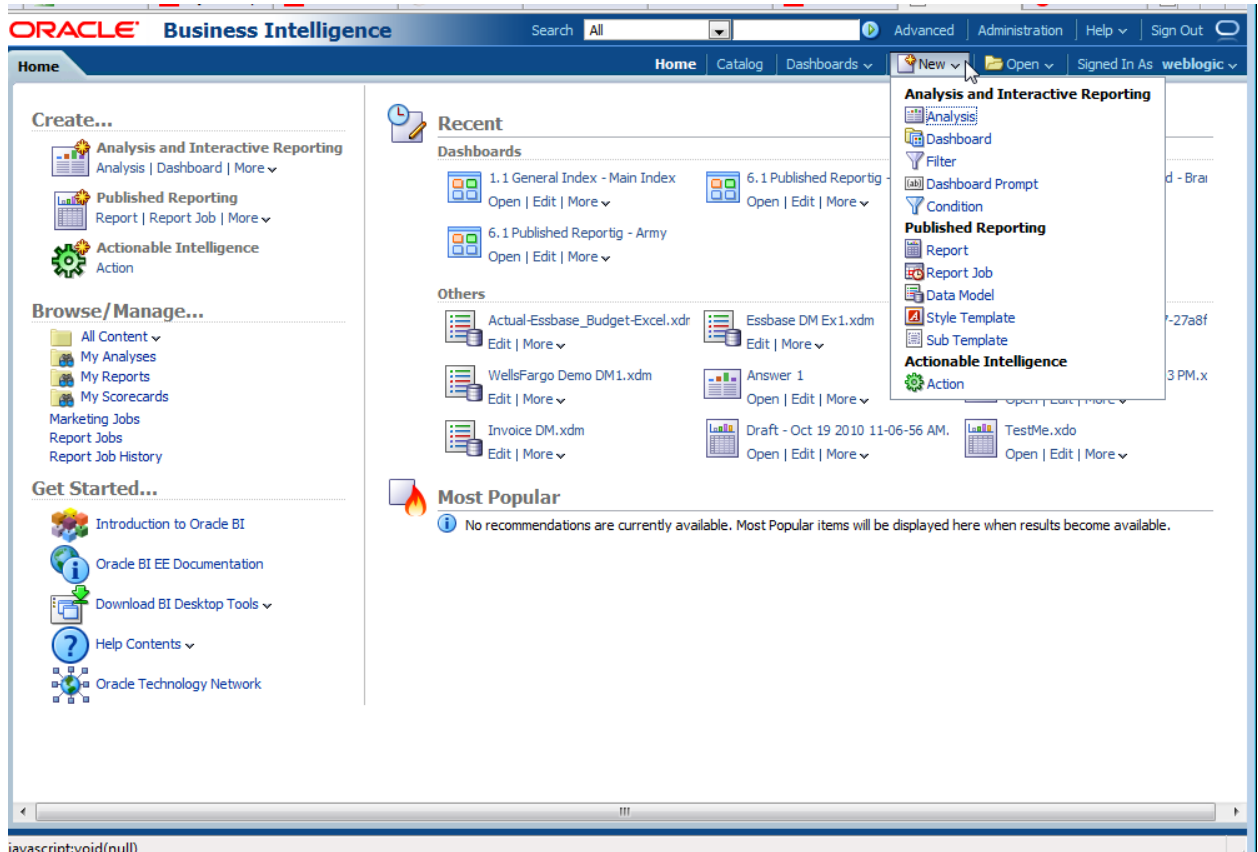
Continue denying permission for all groups for each of the above privileges and your Manage Privileges screen should look similar to this:

The screenshot shows the Oracle Business Intelligence Administration console. The main heading is 'Manage Privileges'. Below this, there is a table listing various components and their associated privileges. The table is organized into four main categories: Access, Actions, Admin: Catalog, and Admin: General. A mouse cursor is pointing at the 'Access to Administration' row.

Category	Component	Privileges
Access	Access to Dashboards	BIConsumer
	Access to Answers	BIAuthor
	Access to Delivers	Denied: BIConsumer
	Access to Briefing Books	BIConsumer
	Access to Administration	BIAdministrator, BIAuthor, BIConsumer
	Access to Segments	Denied: BIConsumer
	Access to Segment Trees	Denied: BIAuthor
	Access to List Formats	Denied: BIAuthor
	Access to Metadata Dictionary	BIAuthor
	Access to Oracle BI for Microsoft Office	Denied: BIConsumer
	Access to Conditions	BIAuthor
	Access to KPI Builder	Denied: BIAuthor
Access to Scorecard	Denied: BIConsumer	
Actions	Create Navigate Actions	BIConsumer
	Create Invoke Actions	Denied: BIAuthor
	Save Actions containing embedded HTML	Denied: BIAdministrator
Admin: Catalog	Change Permissions	BIAuthor
	Toggle Maintenance Mode	BIAdministrator
Admin: General	Manage Sessions	BIAdministrator
	Manage Dashboards	BIAuthor, BIConsumer
	See sessions IDs	BIAdministrator
	Issue SQL Directly	BIAdministrator
	View System Information	BIAdministrator
	Performance Monitor	BIAdministrator
	Manage Agent Sessions	BIAdministrator
	Manage Device Types	BIAdministrator
	Manage Map Data	BIAdministrator
	See privileged errors	BIAdministrator
	See SQL issued in errors	BIConsumer

Manage Privileges page after restricting access

Now when users access the menus and home page, they will see only the choices that are appropriate for the Business Intelligence Standard Edition One license



Business Intelligence Home Page and New Menu

Business Intelligence Standard Edition One also has the following environment and data source restrictions:

Business Intelligence Standard Edition One may only be used on one server that has the ability to run a maximum of 2 sockets. Oracle Business Intelligence Standard Edition One includes a runtime license of WebLogic Server Standard Edition restricted to running the Oracle BI components. You may not cluster Oracle Business Intelligence Standard Edition One servers.

Oracle Business Intelligence Standard Edition One is licensed on Oracle's Named User Plus pricing metric. The minimum for this product are 5 named user plus licenses and the maximum is 50 named user plus licenses.

The data sources for BI Server and Business Intelligence Publisher are limited to the Oracle Database Standard Edition One included in the Business Intelligence Standard Edition One license, one additional database, and any number of flat file sources such as XML, and XLS. You may use Oracle Warehouse Builder Core ETL to pull data from any number of data sources but you must use only the included Oracle Database Standard Edition One as the target database.

Customers who license Business Intelligence Standard Edition One for 11g must restrict their users to creating only those objects specified in the table above and all other system and data source restrictions listed above.

Installing and Using Business Intelligence Standard Edition One for 11g

For new customers purchasing Oracle Business Intelligence Standard Edition One 11g the installation process is to install the following on a single machine that meets the environment restrictions for Oracle Business Intelligence Standard Edition One:

- Oracle Database Standard Edition One (see [System Requirements and Supported Platforms for Oracle Business Intelligence Suite Enterprise Edition 11gR1](#) for the most up to date information on supported platforms and data sources)
- Oracle Business Intelligence 11g following the steps in the Oracle Business Intelligence 11g [Quick Installation Guide](#). When you get to the “Configure Components” page of the installation interview, check the box only for Business Intelligence Enterprise Edition. This will automatically include Oracle Business Intelligence Publisher.

Upgrading Business Intelligence Standard Edition One from 10g to 11g

For customers using Oracle Business Intelligence Standard Edition One 10g who want to upgrade to 11g, the upgrade procedure is an out-of-place upgrade, meaning that the upgrade process does not directly alter your 10g installation in place. To upgrade to 11g, you first install 11g as described in the previous section. Then you run the Upgrade Assistant on your 10g content and import the upgraded content into your 11g environment.

Please follow the steps described in the Oracle Business Intelligence 11g Upgrade Guide.

Frequently Asked Questions

Q: Can Oracle Business Intelligence Standard Edition One customers install and run on Linux?

A: Yes. Oracle does not license software on a platform basis. Customers may license Oracle Business Intelligence Standard Edition One and install it and run it on any of the supported platforms as long as they stay within the limits of the Oracle Business Intelligence Standard Edition One license.

Q: Are the new 11g Map Views included in Oracle Business Intelligence Standard Edition One?

A: Yes. Map Views are a visualization of an Analysis, similar to a table or chart. Oracle Business Intelligence Standard Edition One customers are entitled to create Analyses and use any of the views.

Q: The Oracle Business Intelligence Standard Edition One license states that customers may use one other database in addition to the included Oracle Standard Edition One Database. Can that other database be a multi-dimensional source like Oracle Essbase or the OLAP Option the Oracle Database?

A: Yes. The other database may be any of the data sources supported by Oracle Business Intelligence and is not limited to relational databases.

Q: Can Oracle Business Intelligence Standard Edition One customers use Actions?

A: Business Intelligence Standard Edition One customers may create and use Navigate Actions. Invoke Actions are not included in Oracle Business Intelligence Standard Edition One.

Q: Can Oracle Business Intelligence Standard Edition One customers use Agents?

A: No. Agents (formerly known as iBots and created with the Delivers component in 10g) are not included in Oracle Business Intelligence Standard Edition One.

Q: Can Oracle Business Intelligence Standard Edition One customers use Scorecard and KPIs?

A: No. Performance Management functionality is not included in Oracle Business Intelligence Standard Edition One.

Q: Can Oracle Business Intelligence Standard Edition One customers use Oracle Business Intelligence for Microsoft Office?

A: No. Oracle Business Intelligence for Microsoft Office is not included in Oracle Business Intelligence Standard Edition One

ORACLE®

Oracle Business Intelligence
Standard Edition One 11g
November 2010
Author: Mike Donohue

Oracle Corporation
World Headquarters
500 Oracle Parkway
Redwood Shores, CA 94065
U.S.A.

Worldwide Inquiries:
Phone: +1.650.506.7000
Fax: +1.650.506.7200
oracle.com



Oracle is committed to developing practices and products that help protect the environment

Copyright © 2010, Oracle and/or its affiliates. All rights reserved. This document is provided for information purposes only and the contents hereof are subject to change without notice. This document is not warranted to be error-free, nor subject to any other warranties or conditions, whether expressed orally or implied in law, including implied warranties and conditions of merchantability or fitness for a particular purpose. We specifically disclaim any liability with respect to this document and no contractual obligations are formed either directly or indirectly by this document. This document may not be reproduced or transmitted in any form or by any means, electronic or mechanical, for any purpose, without our prior written permission.

Oracle and Java are registered trademarks of Oracle and/or its affiliates. Other names may be trademarks of their respective owners.

AMD, Opteron, the AMD logo, and the AMD Opteron logo are trademarks or registered trademarks of Advanced Micro Devices. Intel and Intel Xeon are trademarks or registered trademarks of Intel Corporation. All SPARC trademarks are used under license and are trademarks or registered trademarks of SPARC International, Inc. UNIX is a registered trademark licensed through X/Open Company, Ltd. 0410

SOFTWARE. HARDWARE. COMPLETE.