

# Post-Production Automation Media and Entertainment

## 1 Business Challenge

The post-production process involves many steps and a significant amount of coordination among resources. Traditionally, these tasks have involved a significant amount of manual intervention and tracking which can be expensive and inefficient. Further, the process needs to be extremely flexible since each project may require unique steps in the overall flow.

## 2 Solution

This solution is based upon business process flows that have evolved over time. ADF was used to harness the power of the reusable components and accelerated development opportunities it provides. The core business flows were built using Oracle BPM. Oracle SOA Suite 11g handled the service calls and SOA needs, providing a very comprehensive foundation.

## 3 Results & References

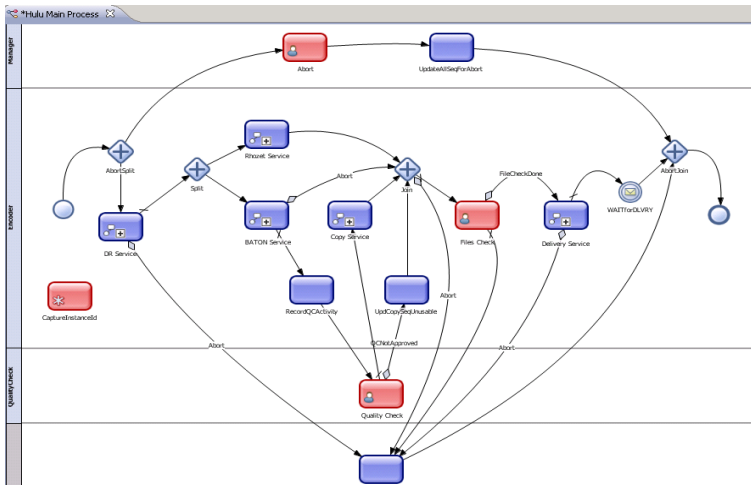
This unique and scalable solution was well received by the users. The BPM analytics together with BAM dashboards enabled the customer to identify bottlenecks and expedite processing of media.

Partner Contact – [Hilal Khan](mailto:hkhan@innwavetech.com)  
[hkhan@innwavetech.com](mailto:hkhan@innwavetech.com)  
[www.innovavetech.com](http://www.innovavetech.com)

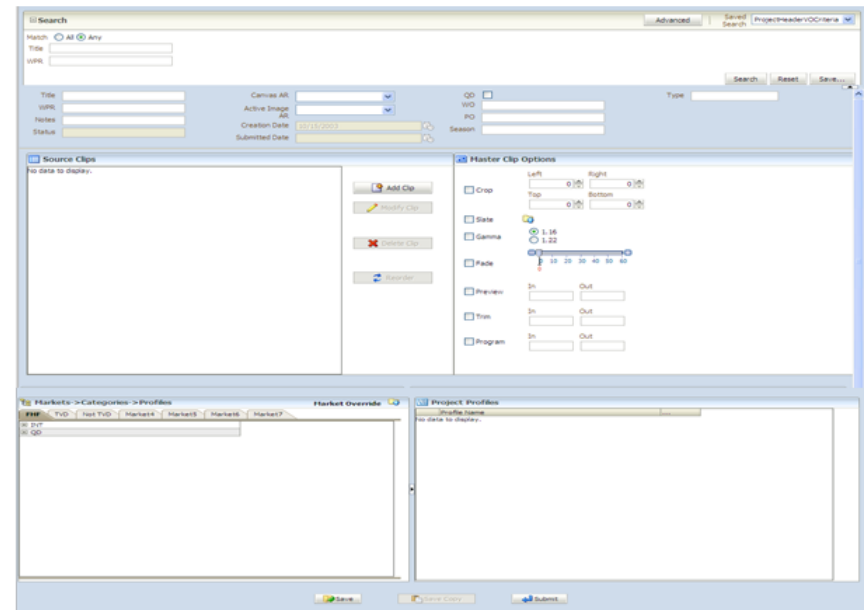
# Post-Production Automation Media and Entertainment



## Process flow



## User Interface



Partner Contact – [Hilal Khan](mailto:hkhan@innwavetech.com)  
[hkhan@innwavetech.com](mailto:hkhan@innwavetech.com)  
[www.innovavetech.com](http://www.innovavetech.com)