

End-to-End Business Monitoring – Oracle BPM



Sector: Construction

1 Business Challenge

1. End-to-end control from the moment the customer gets interested on a development, to the moment the keys are in their hands.
2. Business Control and Monitoring. Analytics in real time

2 Solution

1. BPM/SOA 11g Solution.
2. Take processes from Siebel to the outside, with BPM
3. Integration with all the core and backend Systems: OEBS, PSFT, SIEBEL, UCM, BI EE, Identity Management
4. Flexible UI Forms. ADF through all the custom UI. More importantly, with BPM

3 Results & References

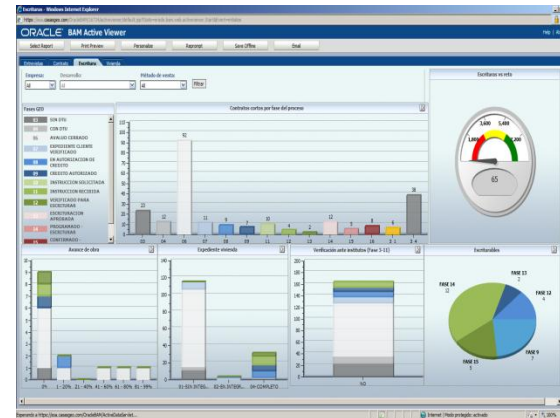
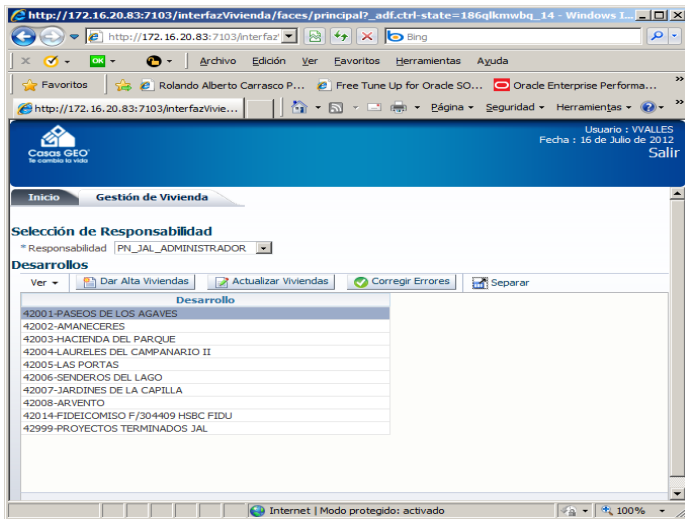
- ROI , customers etc.
1. Efficiency at the Commercial Process
 2. Visibility on where the customers, prospects, opportunities are
 3. Efficiency on sales. More opportunities. More accuracy
 4. IT has a faster way to respond to change

Collateral- <http://www.oracle.com/us/corporate/customers/casas-geo-ebs-case-study-160002.pdf>

Partner Contact (for BPM/SOA)– rcarrasco@spsolutions.com.mx

End-to-End Business Monitoring - Oracle BPM

Sector: Construction



Application	Title	Number	Priority	Assignee	State	Created	Expires
BPMSPEF02CINFRMINSOCIAS	Captura datos de escritura PEREZ SANCHEZ RODRIGO ALEJANDRO - H58AN10247	20339	3	Ignorati (S)	Assigned	Jul 2, 2012 12:44PM	
BPMSPEF02PARANALANULOS	Apliar Escrituras GOMEZ COMARILAS SERGIO - 00320112423	20833	3	Ignorati (S)	Assigned	Jul 9, 2012 6:28 PM	
BPMSPEF02PARANALANULOS	Apliar Escrituras AYLA BECERRA JOSE DE JESUS - 482147254	20833	3	Ignorati (S)	Assigned	Jul 9, 2012 6:28 PM	
BPMSPEF02PARANALANULOS	Apliar Escrituras ACALA MARTINEZ IRINE JUDITH - AMPS0200716	20837	3	Ignorati (S)	Assigned	Jul 9, 2012 6:28 PM	
BPMSPEF02PARANALANULOS	Revisar expediente SALAZAR MATA ANGEL DAVID - SAM421003LC1	30798	3	Ignorati (S)	Assigned	Jul 09, 2012 02:04 PM	
BPMSPEF02PARANALANULOS	Captura datos de escritura VAZQUEZ ELISA FRANCISCO - H8P7208147	30792	3	Ignorati (S)	Assigned	Jul 09, 2012 12:04 PM	
BPMSPEF02PARANALANULOS	Captura datos de escritura ISACHAROBLES ACOSTA - IS448570738	32870	3	Ignorati (S)	Assigned	Jul 11, 2012 12:50 PM	
BPMSPEF02PARANALANULOS	Revisar expediente ALBERTO DURAN VELAZQUEZ - A0280212395	32919	3	Ignorati (S)	Assigned	Jul 11, 2012 04:11 PM	
BPMSPEF02PARANALANULOS	Revisar expediente PEREZ ELIAS ROSA DELISA - 28470020642	33282	3	Ignorati (S)	Assigned	Jul 09, 2012 12:12 PM	
BPMSPEF02PARANALANULOS	Confirmar Preparación de Escrituras	33336	3	Ignorati (S)	Assigned	Jul 09, 2012 14:41 PM	Jul 17, 2012 14:38 PM
BPMSPEF02PARANALANULOS	Captura datos de escritura MORALES REBORETO MARCO - M0280011324	33742	3	Ignorati (S)	Assigned	Jul 09, 2012 02:00 PM	



Additional References



In summary, from the IT/Product Stack/Footprint perspective, what we are using and integrating is:

- Oracle BPM 11g
- Oracle SOA 11g
- Oracle Data Integrator 10g
- Oracle Siebel
- Oracle EBS
- Oracle Internet Directory
- Oracle BI Publisher
- Oracle ADF 11g for both BPM HW UI, and ad-hoc development for satellite applications.
- Oracle Coherence 11g

Everything is hosted at Oracle On-Demand -key part of this architecture

Collateral- <http://www.oracle.com/us/corporate/customers/casas-geo-ebs-case-study-160002.pdf>

Partner Contact (for BPM/SOA)– rcarrasco@spsolutions.com.mx