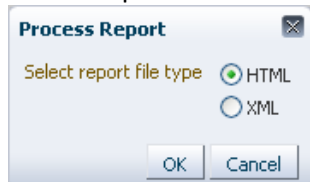


What's New in BPM Suite 11.1.1.6.0?

This document lists the new features in the latest release. For all documentation, visit the [Fusion Middleware Documentation Library for 11.1.1.6.0](#).

BPM Composer

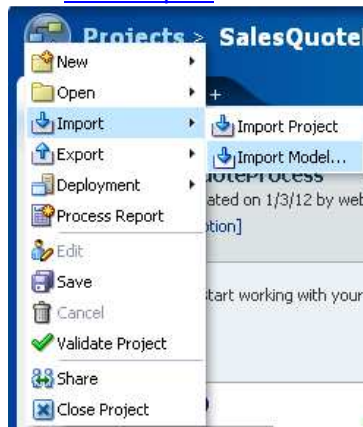
BPM Composer Process report with XML and HTML formatting available



BPM Composer XPDL import

You can now import XPDL into BPM Composer.

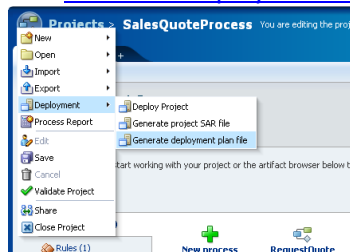
Doc: [XPDL Import](#)



Generate deployment plan from Process Composer UI

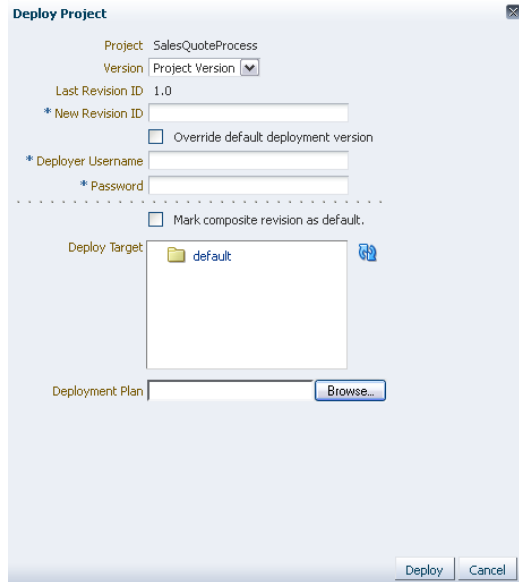
A deployment plan is an xml file used for modifying environment specific values as your project moves from development to test and then to production. It can now be generated in Composer and also used when deploying from Studio or Composer. In Composer, it is called the Deployment Plan while in Studio it is called the Configuration Plan.

Doc: [Generate Deployment Plan](#), [Using Configuration Plans](#)



Simplify the SAR Generation/Deployment Dialog in Composer

Doc: [Simplified deployment from Composer](#)

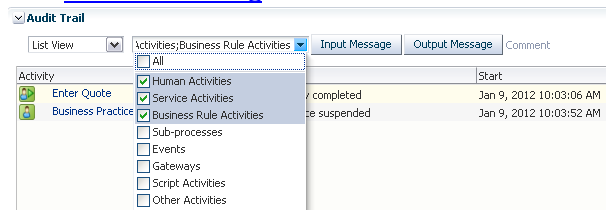


BPM Workspace

Workspace Process Tracking usability enhancements

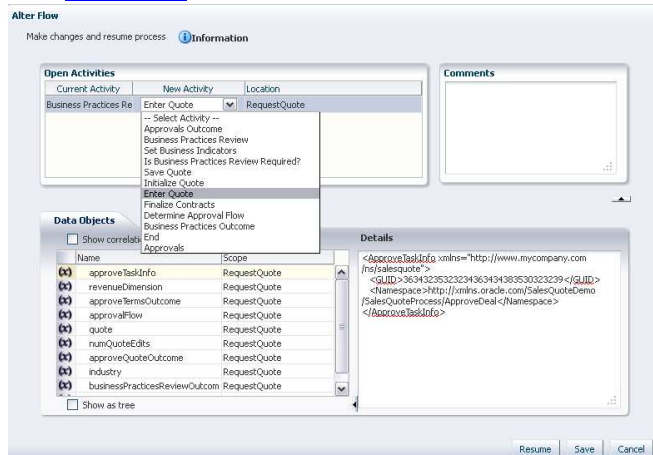
In Process Tracking list audit view, the view is simplified by showing only User Task, Business Rules, and Service Task by default. The user can choose to show other activities to see more information. In addition, the process owner can now view the input and output message, rather than only the admin.

Doc: [Process Tracking](#)



Workspace Alter Flow UI Enhancements make this feature easier to use by simplifying the dialog.

Doc: [Alter Flow](#)



Add logger in workspace

This feature provides an extensive logging mechanism in Worklist and Workspace managed beans.

- Finest logging from EM
 - The finest logging can be enabled from EM console for oracle.soa.services.workflow(Trace 32).
- Performance Logging - in workflow
 - Performance logging will take care of noting how much time is used for a method execution. It will log the method start and end time.

Doc: [Worklist and Workspace logger](#)

BPM Studio

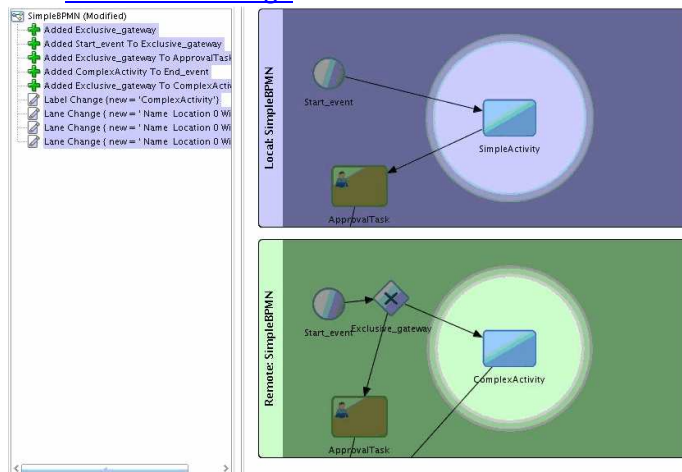
Enhancements to the Oracle Workflow Import functionality of BPM Studio

Additional functionality in OWF is now handled in the conversion into BPMN notation.

BPA to BPM All-or-none merge functionality enhancements

It is more userfriendly, if on clicking the Refresh From BPA action, the user is shown a 3 panel view, with the 3rd panel showing the model resulting out of the merge. Then, looking at this result, the user can opt to proceed with the merge or discard it.

Doc: [BPA to BPM Merge](#)



Improve Default Conversation behavior in BPM Studio

Default conversations are not displayed in the process structure pane anymore; only named conversations are shown. Also, the conversation editor is rearranged so that the user must select the type of conversation to be used first. The list is filtered according to the item being edited.

Doc: [Using Message Events](#)

Human Workflow

Ability to specify the default outcome of a parallel participant as one of the previous outcomes

Doc: [Configuring a Human Task Using the Human Task Editor](#)

Expose assignment service functionality in task assignment dialog in the UI

This feature exposes the dynamic assignment support (round-robin, least-busy, and most-productive) more clearly in the design-time UI, making it easier for the designer to utilize this feature.

Doc:

[Creating a Single Task Participant List](#)
[Static, Dynamic, and Rule-Based Task Assignment](#)
[Dynamic Assignment and Task Escalation Patterns](#)

Human Workflow Engine Enhancement

A new web service and API to get diagnostics for human workflow

Doc: [Workflow JavaDoc](#)

Fault Handling Enhancement

This feature exposes a set of attributes related to a fault object that contains information about an error you want to catch. Using this feature you will have more information to handle/routing the errors.

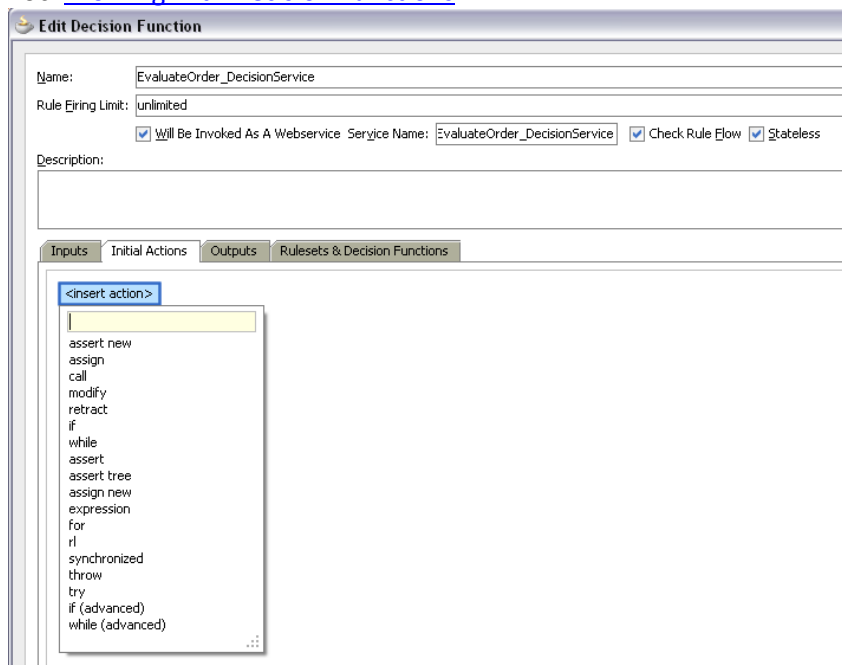
Doc: [Handling Exceptions in a business Process](#)

Business Rules

Add support for initialization actions in Decision Function

With the Initial Actions tab in the Decision Function dialog, the designer can set execution parameters needed before the execution of any rulesets.

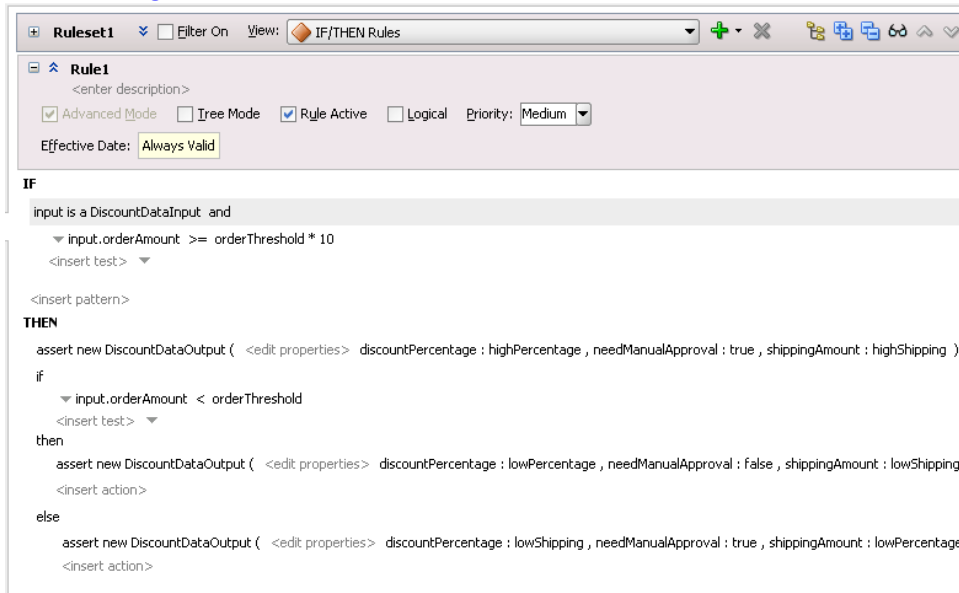
Doc: [Working with Decision Functions](#)



Rules structures UI Enhancements

This feature makes the Rules structure patterns (rule tree) – if-then-else, -elseif, while and do-while – easier to use.

Doc: [Working with Advanced Mode Rules](#)



Rules Usability Enhancements in Composer

The Decision Table in composer has been changed for performance improvements and usability improvements when scrolling large tables.

