

# Optimise Crew Productivity with Oracle Primavera Advanced Work Packaging

Prevent delays and keep project schedules on track

## Primavera Advanced Work Packaging (AWP) configuration

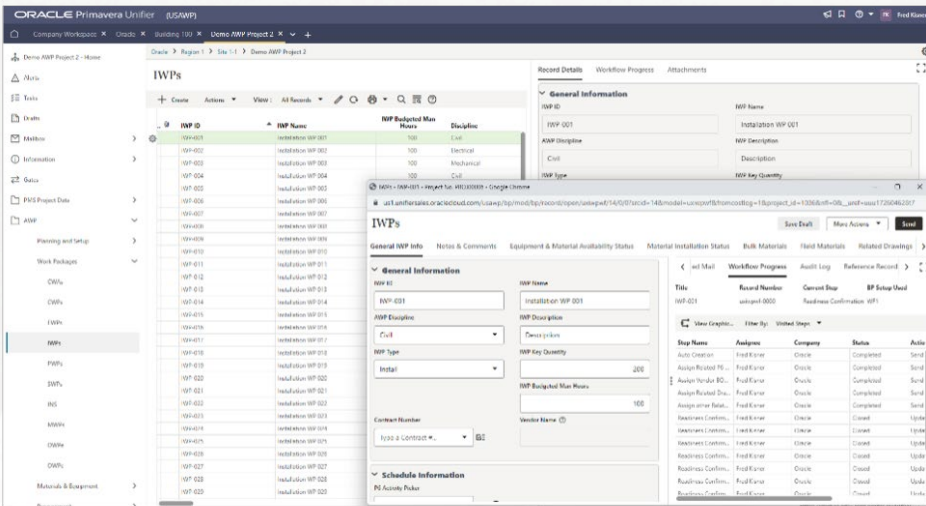
Package all aspects of work together to prevent obstacles for crews on projects. With Oracle Primavera Advanced Work Packaging (AWP), prevent delays and keep project schedules on track.

The Advanced Work Packaging configuration enables owners and EPCs to manage all work packages and automate constraint management and approval cycles.

The configuration is based on the natively integrated Primavera P6 Enterprise Project Portfolio Management and Primavera Unifier systems and leverages proven integrations with other solutions such as the Universal Plant Viewer (UPV) visualization tool, Enterprise Resource Planning (ERP), Enterprise Asset Management (EAM), and Supply Chain Management (SCM) solutions. In addition, Advanced Work Packaging can help owners and EPCs quickly and easily adopt the AWP methodology, developed by the Construction Industry Institute (CII).

## Constraint management

Automated constraint management ensures that no Installation Work Packages (IWP) are released for execution prematurely. WorkFace planners can see all constraints that are relevant to each work package and precisely understand the deficiencies in order to address them.



## Work package structure and modifications

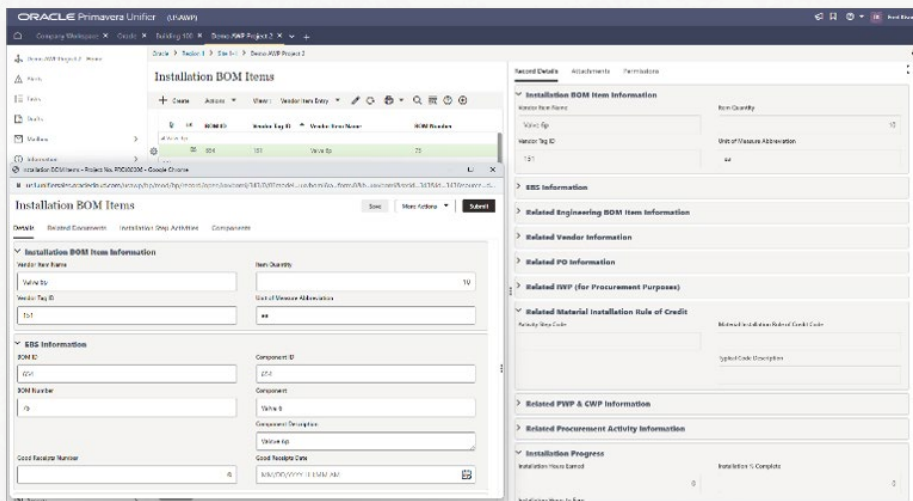
Oracle Construction and Engineering's AWP solution provides a consistent and structured approach to packaging work with the construction sequence driving both engineering and procurement by discipline. Any modifications to a work package are automatically captured and become part of the audit trail, so details such as which constraint was cleared and what may have been re-constrained are clearly communicated and become part of the project record.

## Approval cycles

Automated workflows help ensure that work package requirements are reviewed and approved by required parties prior to the work package's release. Communication among the WorkFace planners, project managers, vendors, and service providers are automated within the solution to facilitate informed, collaborative decision-making to drive improved project outcomes.

## Key business benefits

- Increase productivity
- Reduce installed cost
- Gain early construction input
- Increase project predictability
- Improve progress tracking
- Improve constructability in installation
- Enhance startup and commissioning
- Reduce project risk



## Package delivery

The Oracle AWP lifecycle asset data management solution helps ensure that constraint-free packages of work are available to the crafts to install, ensuring smooth startup to deliver packages and projects on schedule. To achieve this, the Oracle solution supports a Path of Construction (POC), documenting how the capital project will be built and how engineering and procurement deliverables will support that effort. The POC then influences how the engineering and procurement deliverables are packaged, managed, and monitored to ensure compliance and on-time execution/delivery to the site.

## Get started today

Ready to learn more? [Request a demo.](#)

Copyright © 2023, Oracle and/or its affiliates. All rights reserved. This document is provided for information purposes only, and the contents hereof are subject to change without notice. This document is not warranted to be error-free, nor subject to any other warranties or conditions, whether expressed orally or implied in law, including implied warranties and conditions of merchantability or fitness for a particular purpose. We specifically disclaim any liability with respect to this document, and no contractual obligations are formed either directly or indirectly by this document. This document may not be reproduced or transmitted in any form or by any means, electronic or mechanical, for any purpose, without our prior written permission.

This device has not been authorized as required by the rules of the Federal Communications Commission. This device is not, and may not be, offered for sale or lease, or sold or leased, until authorization is obtained.

Oracle and Java are registered trademarks of Oracle and/or its affiliates. Other names may be trademarks of their respective owners.

Intel and Intel Xeon are trademarks or registered trademarks of Intel Corporation. All SPARC trademarks are used under license and are trademarks or registered trademarks of SPARC International, Inc. AMD, Opteron, the AMD logo, and the AMD Opteron logo are trademarks or registered trademarks of Advanced Micro Devices. UNIX is a registered trademark of The Open Group. 0120

Disclaimer: If you are unsure whether your data sheet needs a disclaimer, read the revenue recognition policy. If you have further questions about your content and the disclaimer requirements, e-mail REVREC\_US@oracle.com.